



Stock No 26273

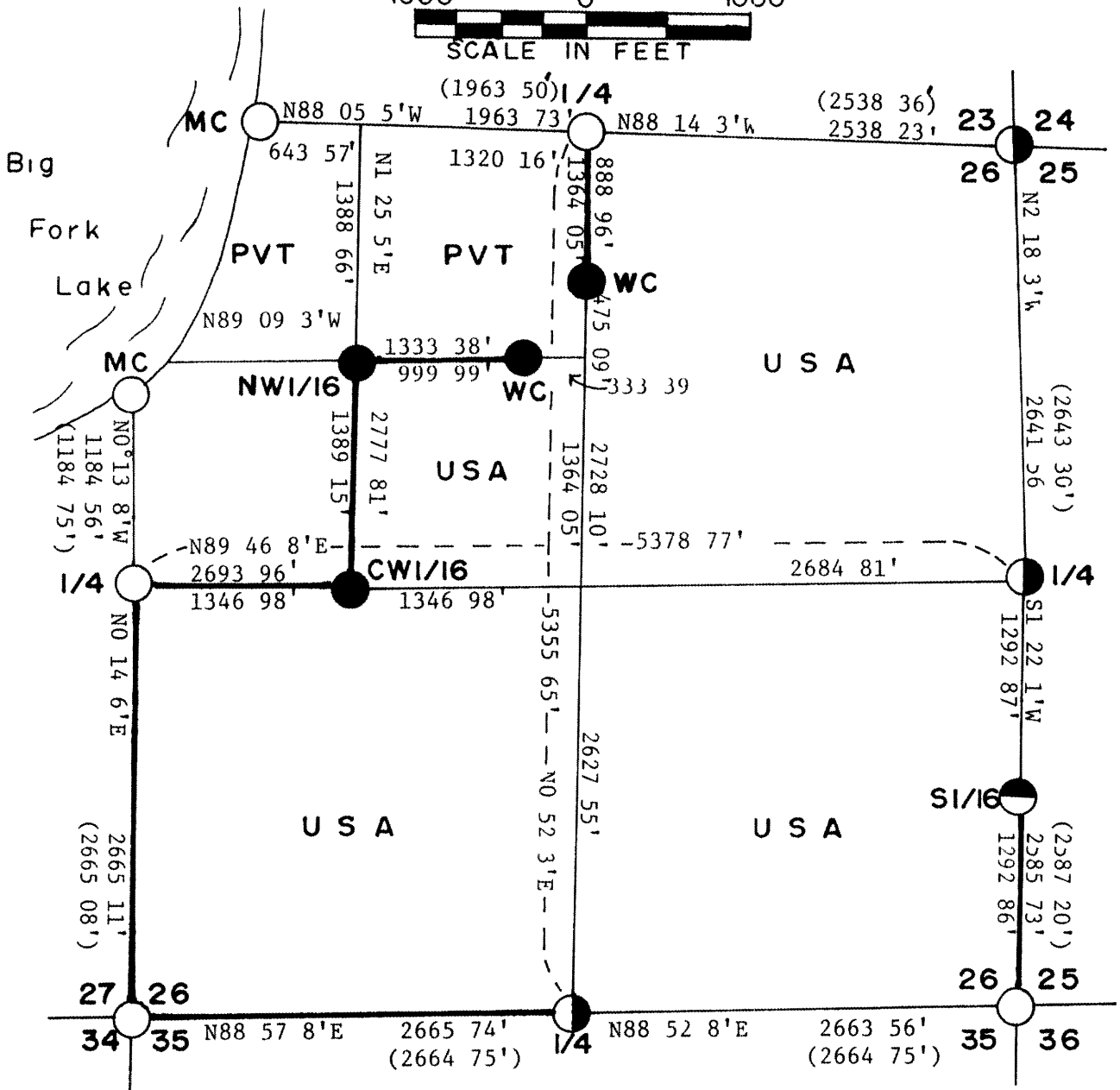
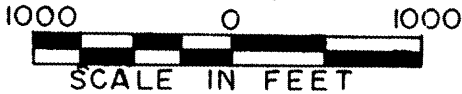
L1099

Sheet 1 of 5

PLAT OF SURVEY U S GOVERNMENT LAND

Being The E1/2, SW1/4 & SE1/4, NW1/4 Section 26, Township 39 North,
Range 11 East, Fourth Principal Meridian

ONEIDA COUNTY, WISCONSIN



LEGEND

- Found Dependent Resurvey Monument by G L O
6 x 24 Concrete Cylinder With Brass Cap
- Found Dependent Resurvey Monuments by C O
2 x 36 Iron Post With Brass Cap
- Set 1 x 36 Drive Type Aluminum Monumen
- Set 1 x 60 Drive Type Aluminum Monumen
- Boundary Line Marked to Standard
- USA** — U S Government Lands

Note (xxx.xx) distances
by G L O

RECEIVED & FILED #
On the 1st day of July 1941
at the Office of the
Register of Deeds
for the County of Oneida
Wisconsin

Conversion Factors
Meters to Feet - 3.280833
Feet to Meters - 0.304801

L1099

Stock No 26273

Sheet 2 of 5

SURVLY NOTES

This survey was made by Milo E. Stefan and party pursuant to the United States Department of Agriculture Forest Service Contract #53-46A6-8-00187 Cadastral Survey for the purpose of subdividing establishing corners and marking the boundaries of U S Government Lands on the perimeter and within Section 26 Township 39 North Range 11 East Fourth Principal Meridian Oneida County Wisconsin as shown on the plat map herewith

The original government subdivision survey of this township was done in 1859 by William Daugherty Subsequent surveys by the U S Department of Interior General Land Office were done in 1926 and 1941 These GLO corners were recovered and used as the control for this survey

The U S Government acquired title to the lands in Section 26 in 1931

Bearings between corner positions are true bearings by reference to a solar observation All distances shown thereon are in feet and hundredths of feet The control traverse was measured with an electronic distance measuring instrument Corners recovered restored and established by this survey are marked by the monument described in the map legend Each monumented corner position is referenced to blazed and scribed bearing trees as described as corner references

CORNERS RECOVERED AND RESTORED

- 1 Section Corner to Sections 23 24 25 and 26, T39N R11E
Position found marked by a GLO monument a brass cap set atop a 2" x 36" iron pipe as set in 1926

Corner References

6"	White Pine	N76 E	12 66 feet
4	White Pine	S23 E	26 06 feet
12"	Jack Pine	S20 W	25 95 feet
6	White Pine	N06 W	19 02 feet
	Steel Sign Post	Northeast	1 0 feet

- 2 Section Corner to Sections 26 27 34 and 35 T39N R11E
Position found marked by a CLO monument a brass cap in a 6 x 24 concrete cylinder as set in 1941

Corner References

12	White Pine	S64 E	19 67 feet
5"	Tamarack	S51 W	32 72 feet
6"	Tamarack	N67 W	20 21 feet
5'	Tamarack	N24 W	38 17 feet
	Steel Sign Post	North	1 2 feet
	Steel Sign Post	East	1 4 feet

- 3 Section Corner to Sections 25 26 35 and 36 T39N R11E
Position found marked by a CLO monument a brass cap set in a 6 concrete cylinder as set in 1941

Corner References

8	Hemlock	N59 E	22 11 feet
9'	Hemlock	S60 1/4 E	18 48 feet
6	Hemlock	S35 W	46 20 feet
7	Hemlock	N54 1/4 W	17 49 feet
	Steel Sign Post	East	1 8 feet

60017

Stock No 26273

Sheet 3 of 5

4 Quarter Corner to Sections 23-26, T39N R11E

Position found marked by a GLO monument a brass cap set atop a 2 x 36' iron pipe set in 1926 and restored by John H Fisher in 1985

Corner References

18	Red Pine	S3 W	53 1 feet
9"	White Pine	S39 W	56 9 feet
10'	White Pine	N64 W	44 6 feet
12'	Red Maple	N28 W	37 3 feet
	6" x 6 Cedar Sign Post	N65 E	1 4 feet

5 Quarter Corner to Sections 26-27 T39N R11E

Position found marked by a GLO monument a brass cap set in a 6 x 24" concrete cylinder set in 1941

Corner References

9"	White Birch	N55 E	19 87 feet
12"	Red Pine	S03 E	69 58 feet
6'	Red Pine	S31 W	18 87 feet
14	White Pine	N61 W	11 81 feet
	Steel Sign Post	East	70 feet

6 Quarter Corner to Sections 25-26 T39N R11E

Position found marked by a GLO monument a brass cap set atop a 2 x 36" iron pipe in 1926

Corner References

22'	Red Pine	N69 E	71 14 feet
18	Red Pine	S71 E	115 89 feet
10	Red Pine	S30 W	25 84 feet
26"	Red Pine (original)	N60 W	4 66 feet
	Steel Sign Post	Northeast	1 2 feet

7 Quarter Corner to Sections 26-35, T39N R11E

Position found marked by a GLO monument a brass cap atop a 1 1/2 iron pipe set in 1941

Corner References

6	Sugar Maple	N84 E	25 39 feet
18'	White Birch	N87 E	10 41 feet
14	Hemlock	S45 E	27 69 feet
8"	Sugar Maple	N29 W	26 55 feet
	Steel Sign Post	West	1 3 feet

8 Meander Corner to Sections 23-26 T39N R11E

Position found marked by a GLO monument a brass cap set in a 6' x 24 concrete cylinder as set in 1941

Corner References

11	Red Pine	N56 E	22 4 feet
9"	Red Pine	S66 E	14 5 feet
8'	Red Pine	S31 W	5 71 feet
9'	Red Pine	N39 W	13 08 feet
	Steel Sign Post	North	5 feet

66017

Stock No 26273

Sheet 4 of 5

9 Meander Corner to Sections 26-27, T39N R11E

Position found marked by a GLO monument a brass cap set in a 6 x 24 concrete cylinder as set in 1941

Corner References

12	Red Pine	N61 E	29 75 feet
7	Red Pine	S72 F	6 06 feet
8	Red Pine	S48 W	14 71 feet
	Steel Sign Post	North	1 3 feet

CORNERS ESTABLISHED1 South Sixteenth Corner Between Sections 25-26

Position established on line and at midpoint between the East Quarter and Southeast Section Corners to Section 26

Corner References

12"	Hemlock	S03 W	41 80 feet
6"	Cedar	S76 W	28 54 feet
	Steel Sign Post	South	1 5 feet
1'	Steel Pipe Alongside		

2 Center North Sixteenth Corner to Section 26

Position established on line and at midpoint between the North Quarter and Center Quarter Corners to Section 26 As corner falls in beaver flowage we established two Witness Corners to this position as follows

Witness Corner North on North-South Quarter Line 475 09 Feet

Corner References

6	Black Spruce	S10 W	6 45 feet
4"	Black Spruce	N44 W	8 19 feet
	Steel Sign Post	South	8 feet

Witness Corner West on North Sixteenth Line 333 35 Feet

Corner References

12	White Birch	N20 W	15 91 feet
12"	Red Pine	S82 W	43 95 feet
	Steel Sign Post	East	1 5 feet

3 Center West Sixteenth Corner to Section 26

Position established on line and at midpoint between the West Quarter and Center Quarter Corners to Section 26

Corner References

8"	White Birch	S20 E	26 08 feet
3	Balsam Fir	S17 W	7 98 feet
	Steel Sign Post	West	1 8 feet
	3/4' Iron Pipe	N45 W	2 5 feet

4 Northwest Sixteenth Corner to Section 2

Position established at the intersection of the North and West Sixteenth lines to Section 26

Corner References

10	Hemlock	S70 E	28 65 feet
12	Hemlock	S32 W	22 97 feet
	Steel Sign Post	South	1 5 feet
	3/4 iron pipe	N86 W	19 00 feet

66012

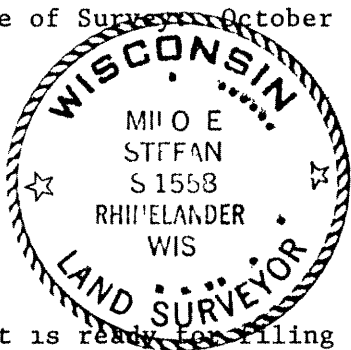


Stock No 26273

SURVIYORS AFFIDAVIT

I Milo E Stefan Land Surveyor registered in the State of Wisconsin hereby certify That I have surveyed and subdivided Section 26 T39N R11E Fourth Principal Meridian County of Oneida State of Wisconsin in accordance with the rules of the survey of public lands and with the statutes of the State of Wisconsin The plat map and survey notes are an accurate representation of the corners recovered and established

Date of Survey October 1988



Milo E Stefan
Milo E Stefan
Registered Land Surveyor
State of Wisconsin
Certificate #1558

Plat is ready for filing

Amel York
District Ranger

12/6/88
Date

21009