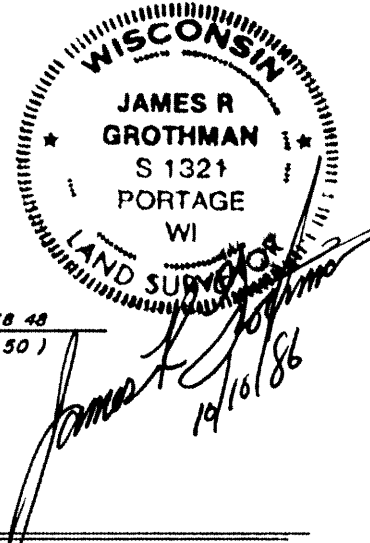
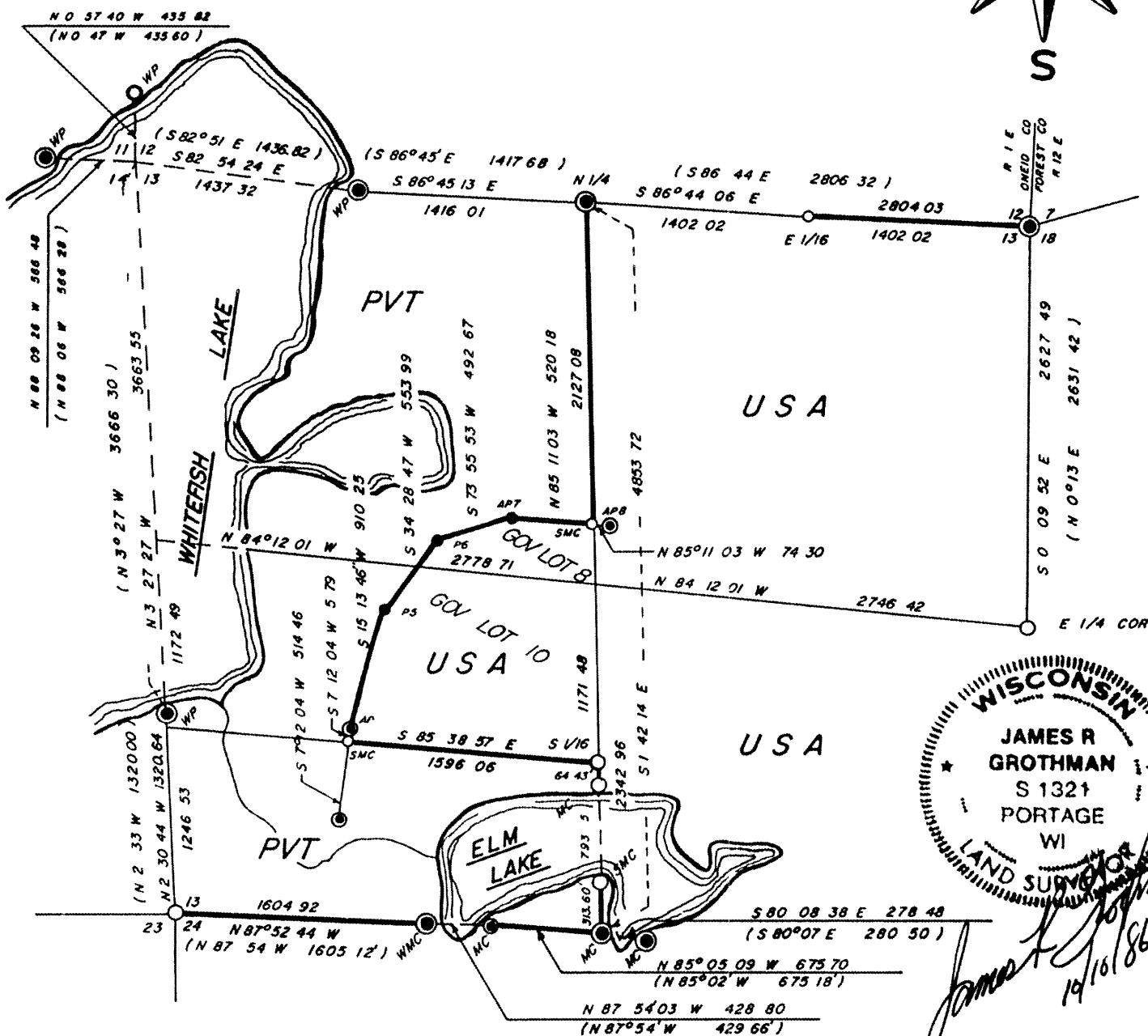
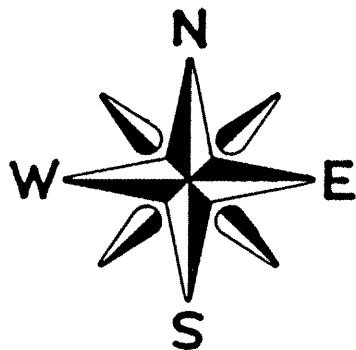
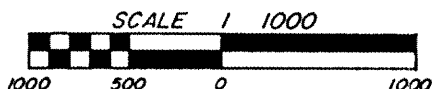


# PLAT OF SURVEY US GOVERNMENT LAND

Sheet 1 of 8

BEING THE EAST 1/2 AND GOVERNMENT LOTS 8 AND 10, SECTION 13,  
TOWN 38 NORTH, RANGE 11 EAST, FOURTH PRINCIPAL MERIDIAN,  
ONEIDA COUNTY, WISCONSIN



### LEGEND

- FOUND 6 DIA G L O CONCRETE MONUMENT w/BRAS CAP & EMBEDDED IRON ROD
- FOUND 4 DIA G L O CONCRETE MONUMENT w/BRAS CAP & EMBEDDED IRON ROD
- 2 DIA ALUMINUM MONUMENT w/ALUM CAP SET BY U S FOREST SERVICE
- FOUND 1 DIA IRON PIPE w/BRAS CAP
- SET 1 DIA X 60 LONG BERNTSEN ALUMINUM PIPE MONUMENT w/ALUM CAP
- SET 1 DIA X 36 LONG BERNTSEN ALUMINUM PIPE MONUMENT w/ALUM CAP
- U S GOVERNMENT LAND BOUNDARY LINE MARKED AND POSTED TO U S F S STANDARDS
- ( ) PUBLISHED G L O DEPENDENT RESURVEY INFORMATION

RECEIVED & FILED #1102  
 JUL 16 1990  
 V.F.

1102

Stock No 26273

Sheet 2 of 8

T 38 N R 11 E, SECTION 13

SURVEY NOTES

This survey is made by CENTRAL ENGINEERING COMPANY, INC pursuant to United States Department of Agriculture, Forest Service Contract "No 53-56A6-6-00020, Cadastral Survey" for the purpose of recovering, restoring, establishing, marking and perpetuating the corners and boundary lines of the U S Government land on the perimeter and within Section 13, T38N, R11E, Fourth Principal Meridian, Oneida County, Wisconsin as shown on the plat herewith

The original government survey of the township was made in 1859, by William E Daugherty

The U S Government acquired title to the lands in Section 12 in 1933 and 1934

This township was resurveyed by the General Land Office in 1941

Bearings between corner positions are true bearings by reference to a solar observation All distances shown thereon are in feet and hundredths of feet The control traverse was measured by use of electronic distance measuring equipment to an accuracy of one part in 20,000 Corners recovered, restored and established by this survey are marked by the monument described in the map legend Each monumented corner position is referenced to blazed and scribed bearing trees and described reference objects

CORNERS RECOVERED1 Corner to Sections 13-14-23-24

Corner is monumented by a C L O brass cap badly decayed This corner was replaced with a 2"x60" aluminum pipe with aluminum tablet stamped to identify corner

## Corner References

White Pine	15"	East	103 42 feet
White Pine	18"	S10°E	67 93 feet
White Birch	6"	N79°W	19 04 feet
White Pine	19"	N37°W	71 94 feet
Steel Sign Post		West	1 00 foot ±

2 South 1/4 Corner and Meander Corner to Sections 13 & 24 on the West side of Elm Lake

Corner is monumented by a G L O brass cap

## Corner References

Balsam	7"	S17°W	43 62 feet
White Pine	10"	S43-1/2°W	147 58 feet
White Pine	31"	N75°W	254 56 feet
White Pine	14"	N71°W	111 70 feet
Steel Sign Post		Northeast	1 00 foot ±



Stock No 26273

Sheet 3 of 8

T 38 N R 11 E, SECTION 13

3 Meander Corner to Sections 13 and 24 on the East side of Elm Lake

Corner is monumented by a C I O brass cap

## Corner References

White Pine	7"	N17 <sup>o</sup> E	24 82 feet
Spruce	8"	S64 <sup>o</sup> E	80 30 feet
White Pine	9"	S12 <sup>o</sup> E	22 60 feet
Tamarack	6"	S73 <sup>o</sup> W	17 98 feet
Steel Sign Post		Northwesterly	1 00 foot ±

4 Witness Meander Corner to Sections 13 and 24

Corner is monumented by a C I O brass cap

## Corner References

White Pine	7"	S77 <sup>o</sup> E	7 70 feet
Hemlock	4"	S20 <sup>o</sup> E	29 04 feet
Maple	17"	S32 <sup>o</sup> W	111 33 feet
Maple	16"	N56 <sup>o</sup> W	80 12 feet
Hemlock	16"	S34 <sup>o</sup> W	129 72 feet
Steel Sign Post		South	1 00 foot ±

5 Meander Corner Between Sections 13 and 24, on the South Side of Elm Lake

Corner is monumented by a G L O brass cap

## Corner References

Tamarack	4"	S27 <sup>o</sup> W	20 60 feet
Tamarack	4"	N87 <sup>o</sup> E	13 37 feet
Tamarack	4"	N26 <sup>o</sup> W	5 47 feet
Steel Sign Post		Northwesterly	1 00 foot ±

6 Meander Corner to Sections 13 and 14, on the South Side of Whitefish Lake

Corner is monumented by a C L O Brass Cap

## Corner References

Red Pine	18"	N69 <sup>o</sup> E	38 85 feet
Tamarack	10"	S85 <sup>o</sup> E	54 17 feet
White Pine	24"	S4 <sup>o</sup> W	31 96 feet
Oak	5"	S51 <sup>o</sup> W	22 33 feet
Steel Sign Post		North	1 00 foot ±

7 Meander Corner Between Section 11 and 12, on the North Side of Whitefish Lake

Corner is monumented by a 1"x60" aluminum pipe with a 3" aluminum tablet stamped to identify corner previously restored and documented on September 23, 1986 by William B Cochrane

## Corner References

Hemlock	8"	N75 <sup>o</sup> 30'W	16 17 feet
Hemlock	13"	N34 <sup>o</sup> 45'E	58 08 feet

L1102

Stock No 26273

Sheet 4 of 8

T 38 N R 11 E, Section 13

8 Quarter Corner to Sections 13 and 18

Corner was monumented by a C L O brass cap Found 2" diameter iron pipe without cap, position verified by control traverse and existing bearing trees Searched for, but failed to find G I O brass cap Replaced 2" diameter iron pipe with 2"x60" aluminum pipe with a 3" aluminum tablet stamped to identify corner

## Corner References

Cedar	10"	N50°W	13 80 feet
Cedar	10"	N47°E	46 86 feet
Cedar	10"	S85°W	16 33 feet
Cedar	9"	S66°E	13 87 feet
Spruce	7"	N62°E	12 48 feet
Steel Sign Post		West	50 foot

9 Corner to Sections 12 and 13, T38N R11E and Sections 7 and 18, T38N R11E

Corner is monumented by a C I O brass cap

## Corner References

Sugar Maple	10"	N42°E	22 23 feet
Red Pine	9"	S35°E	32 16 feet
Red Pine	9"	S61°W	19 41 feet
Sugar Maple	12"	N19°W	43 36 feet
Steel Sign Post		South	1 00 foot ±

10 Quarter Corner to Sections 12 and 13

Corner is monumented by a G L O brass cap

## Corner References

Red Pine	18"	S40°E	31 38 foot
Birch	16"	S27°W	57 10 feet
Red Maple	12"	N68°W	24 12 feet
Red Pine	5"	S32°W	41 09 feet
Steel Sign Post		South	1 00 foot ±

11 Meander Corner between Sections 11 and 14, on West Side of Whitefish Lake

Corner is monumented by a C L O brass cap

## Corner References

Maple	17"	N21°E	10 67 feet
Oak	23"	N49°E	28 44 feet
Oak	16"	S72°W	30 58 feet
SE Corner of Cottage		N87°W	41 39 feet

Stock No 26273

Sheet 5 of 8

T 38 N R 11 E, Section 13

12 Meander Corner between Sections 12 and 13, on the East Side of Whitefish Lake

Corner is monumented by a C I O brass cap

## Corner References

Norway Pine	17"	N43°E	8 07 feet
Norway Pine	17"	S80°E	11 14 feet
Norway Pine	12"	S1°W	40 33 feet
Norway Pine	15"	S35°W	27 47 feet

13 Angle Point Number 3, Section 13

Corner is monumented by a G L O brass cap

## Corner References

Maple	14"	S54°E	117 37 feet
Hemlock	5"	N75°W	50 41 feet
Hemlock	10"	N19°W	71 42 feet
Steel Sign Post		Easterly	1 00 foot ±

14 Angle Point Number 4, Section 13

Corner is monumented by a G L O brass cap

## Corner References

White Birch	9"	N72°E	53 61 feet
White Birch	8"	S20°E	26 87 feet
White Birch	8"	N85°W	59 72 feet
Steel Sign Post		East	1 00 foot ±

15 Angle Point Number 5, Section 13

Corner is monumented by a C L O brass cap

## Corner References

Tamarack	6"	N60°E	4 52 feet
Cedar	10"	S7°E	28 30 feet
Tamarack	6"	N27°W	18 67 feet
Steel Sign Post		Southeasterly	1 00 foot ±

16 Angle Point Number 6, Section 13

Corner is monumented by a G L O brass cap

## Corner References

Tamarack	7"	S40°E	20 96 feet
Cedar	3"	S45°W	40 35 feet
Tamarack	8"	N13°W	19 21 feet
Steel Sign Post		Southeasterly	1 00 foot ±



Stock No 26273

Sheet 6 of 8

T 38 N R 11 E, Section 13

17 Angle Point Lumber 7, Section 13

Corner is monumented by a G I O brass cap

## Corner References

Cedar	20"	S12 <sup>o</sup> E	31 98 feet
Cedar	16"	S62 <sup>o</sup> W	8 85 feet
Cedar	8"	N13 <sup>o</sup> W	9 50 feet
Steel Sign Post		Southeast	1 00 foot ±

18 Angle Point Number 8, Section 13

Corner is monumented by a G I O brass cap

## Corner References

Red Pine	10"	N81 <sup>o</sup> E	11 57 feet
Red Pine	14"	S34 <sup>o</sup> W	18 32 feet
Red Pine	12"	N5 <sup>o</sup> W	14 44 feet
Steel Sign Post		Southwesterly	1 00 foot ±



Stock No 26273

Sheet 7 of 8

N 38 N R 11 E, SECTION 13

CORNERS ESTABLISHED1 Special Meander Corner, Section 13

Corner is monumented by a 1"x36" aluminum pipe with a 3" aluminum tablet stamped to identify corner. The corner is set at the intersection of the line between AP7 and AP8 and the North-South 1/4 line of Section 13.

## Corner References

Red Pine	12"	S79°E	45 21 feet
Red Pine	12"	S84°W	37 13 feet
Red Pine	14"	N36°W	23 08 feet
Angle Point 7		S85°11'03"E	520 18 feet
Angle Point 8		S85°11'03"E	74 30 feet
Steel Sign Post		South	1 00 foot

2 Special Meander Corner, Section 13

Corner is monumented by a 1"x36" aluminum pipe with a 3" aluminum tablet stamped to identify corner. The corner is set at the intersection of the line between AP3 and AP4 and the South line of Government Lot 10, Section 13.

## Corner References

White Birch	6"	S28°E	21 71 feet
White Birch	12"	S37°W	41 63 feet
White Birch	8"	N86°W	59 79 feet
Steel Sign Post		Northeast	1 00 foot

3 Center-South 1/16 Corner to Section 13

Corner is monumented by a 1"x60" aluminum pipe with a 3" aluminum tablet stamped to identify corner. The corner is set on line and at the midpoint between the Quarter Corner to Sections 13 and 24 and the Quarter Corner to Sections 13.

## Corner References

White Pine	6"	N67°W	24 38 feet
White Birch	8"	N5°W	26 00 feet
White Birch	12"	S8°W	25 45 feet
Steel Sign Post		Southeast	1 00 foot

L1102



Stock No 26273

Sheet 8 of 8

T 38 N R 11 E SECTION 13

4 Special Meander Corner to Section 13 on the North Side of Elm Lake

Corner is monumented by a 1"x60" aluminum pipe with a 3" tablet stamped to identify corner. This corner is set on the North-south Quarter line of Section 13 and North of Elm Lake.

## Corner References

Tamarack	6"	S40°E	3 53 feet
Tamarack	5"	S69°W	14 12 feet
Spruce	5"	N21°W	21 86 feet
Steel Sign Post		Post	1 00 foot

5 Special Meander Corner to Section 13, on the South Side of Elm Lake

Corner is monumented by a 1"x60" aluminum pipe with a 3" tablet stamped to identify corner. This corner is set on the North-South Quarter line of Section 13 and South of Elm Lake.

## Corner References

Spruce	6"	N38°W	12 50 feet
Spruce	8"	S8°W	21 10 feet
White Pine	10"	S48°E	22 40 feet
Steel Sign Post		Post	1 00 foot

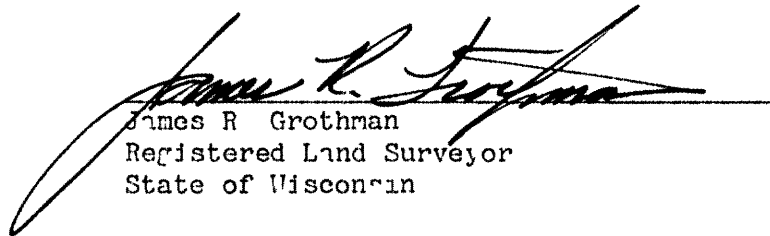
SURVEYOR'S AFFIDAVIT

State of Wisconsin)

ss

County of Columbia)

I, James R Grothman, Land Surveyor, Registered in the State of Wisconsin, hereby certify That I have surveyed and subdivided Section 13, T38N, R11E, Fourth Principal Meridian, County of Oneida, State of Wisconsin, in accordance with the rules of the survey of public lands and with the statutes of the State of Wisconsin. The plat map and survey notes are an accurate representation of the corners recovered and established.

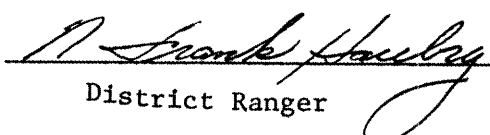
  
James R Grothman  
Registered Land Surveyor  
State of Wisconsin

Certificate No 1321

Date of Survey June-September 1986



Plat ready for filing

  
District Ranger

Date

1/6/87

L1102