

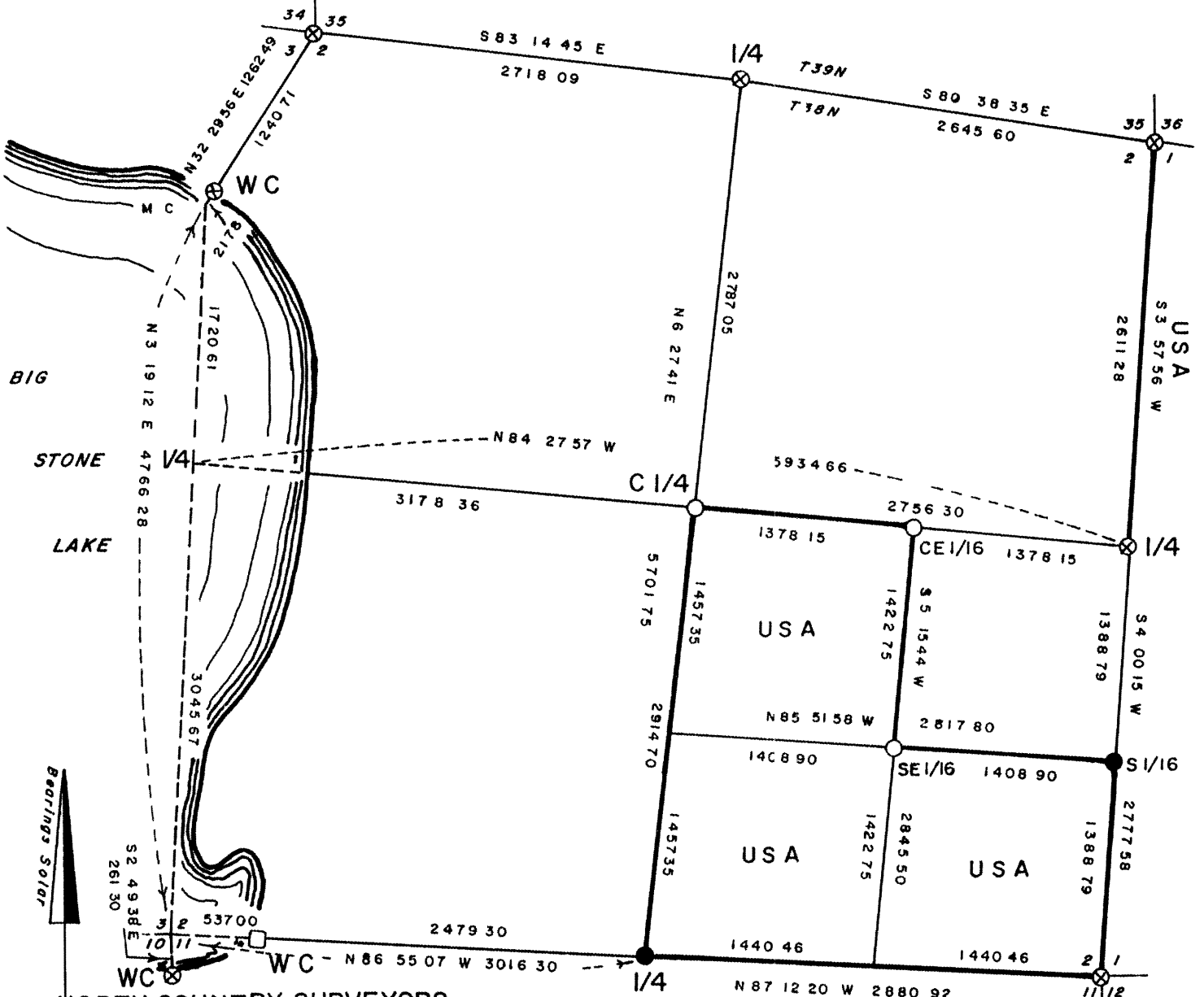
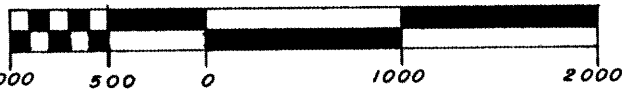
PLAT OF SURVEY U S GOVERNMENT LAND

Being the east line of the NE 1/4, the NW 1/4 of the SE 1/4, SW 1/4 of the SE 1/4
and the SE 1/4 of the SE 1/4

Section 2

Township 38 North, Range 11 East, Fourth Principal Meridian
County of Oneida, State of Wisconsin

Scale 1 1000



NORTH COUNTRY SURVEYORS

LEGEND

- ⊗ 6 diameter concrete monument with brass tablet found in place
- 2 iron pipe with brass tablet found in place
- 6 x 6 square concrete monument found in place
- Corner position marked by a 2 inside diameter 3 long aluminum pipe capped with a 3 diameter aluminum tablet stamped to identify corner
- Corner position marked by a 2 inside diameter 5 long aluminum pipe capped with a 3 diameter aluminum tablet stamped to identify corner
- Boundary U S Government Land

RECEIVED & FILED #
 Oneida County Surveyors Office
 Date **JUL 16 1980**
 By *John H. Fisher*
 Date **March 24 1985**

Stock No 26273

SURVEY NOTES

This survey was made by North Country Surveyors pursuant to United States Department of Agriculture, Forest Service Contract No 53-56A6-4-00075, Cadastral Survey for the purpose of recovering, restoring, establishing marking and perpetuating the corners and boundary lines of the U S Government land on the perimeter and within Section 2, T38N, R11E, Fourth Principal Meridian, Oneida, County, Wisconsin as shown on the plat herewith

The original Government Survey of the North Township line was completed by Hiram C Fellows in 1859 The East line of the Township was surveyed by Alfred Millard in 1858 The remainder of the Township was surveyed by Alfred Millard in 1859

Two Dependent Resurveys have been made which are used for the control of this survey and established the exterior corners of Section 1 In 1937 the Range line between R11E and R12E was re-surveyed In 1941 a Dependent Resurvey of Sections 1,2,11 to 14, 27 to 36, 35, and 36 established and monumented the corners for this section

Bearings between corner positions are true bearings by reference to a solar observation All distances shown thereon are in feet and hundredths of feet The control traverse was measured by use of electronic distance measuring equipment Corners recovered, restored and established by this survey are marked by the monument described in the map legend Each monumented corner position is referenced to blazed and scribed bearing trees and described reference object

CORNERS RECOVERED

1 Corner to Sections 1-2-35-36

Corner is monumented by a 6 round concrete monument with a General Land Office brass tablet stamped to identify the corner

Corner References

Nail in Red Maple	10	N67°E	22.6 feet
Nail in Red Pine	12	N42°W	88.1 feet
Nail in Hemlock	20	S75°E	94.0 feet
Nail in White Pine	14	S11°W	104.0 feet
Wood Post		S72°E	1.3 feet



Stock No 26273

2 Quarter Corner to Sections 1-2

Corner is monumented by a 6 round concrete monument with a General Land Office brass tablet stamped to identify the corner

Corner References

Nail in White Pine	20	N9°W	40 5 feet
Nail in Black Spruce	8	N47°E	25 5 feet
Nail in Black Spruce	6	N17°E	16 7 feet
Nail in Black Spruce	5	S42°E	5 1 feet
Wood Post		N45°E	1 7 feet

3 South 1/16 Corner to Sections 1-2

Corner is monumented by a 2 iron pipe with a Forest Service cap stamped by R L S number S-802 to identify the corner

Corner References

Nail in Red Pine	15	N58°W	7 0 feet
Nail in White Pine	14	S19°W	41 0 feet
Nail in Red Pine	16	N77°E	27 5 feet
Steel Post		S58°W	0 9 feet

4 Corner to Sections 1-2-11-12

Corner is monumented by a 6 round concrete monument with a General Land Office brass tablet stamped to identify the corner

Corner References

Nail in Black Spruce	10	S69°E	25 5 feet
Nail in Tamarack	10	S69°W	50 7 feet
Nail in Black Spruce	7	N77°W	40 2 feet
Nail in Black Spruce	6	S79°E	17 4 feet
Wood post		N78°W	1 0 feet



Stock No 26273

5 Quarter Corner to Sections 2-11

Corner is monumented by a 2 iron pipe with a General Land Office brass tablet stamped to identify the corner

Corner References

Nail in Red Maple	9	S89°W	31 2 feet
Nail in White Pine	8	S12°E	60 1 feet
Nail in Oak	16	S23°E	20 4 feet
Nail in Red Pine	12	N59°E	63 6 feet
Steel post		EAST	0 9 feet
6 X 6 Concrete Monument		N25°E	0 35 feet

6 Witness Corner to corner between Sections 2,3,10 and 11

Corner is monumented by a 6 6 concrete monument

Corner References

Nail in White Pine	16	S24°W	41 4 feet
Nail in Red Pine	17	S18°E	19 0 feet
Nail in Red Pine	16	N70°E	24 0 feet
Nail in Spruce	7	N47°W	5 4 feet
Steel post		SOUTH	1 2 feet

7 Witness Meander Corner to Sections 2-7

Corner is monumented by a 6 round concrete monument with a General Land Office brass tablet stamped to identify the corner

Corner References

Nail in Tamarack	8	N45°W	24 2 feet
Nail in Cedar	6	N38°W	61 2 feet
Nail in Tamarack	9	N30°E	25 5 feet
Nail in Red Maple	9	S55°E	45 8 feet
Steel post		S37°W	1 4 feet

Stock No 26273

8 Witness Corner to corner between Sections 2-3-10 and 11

Corner is monumented by a 6 round concrete monument with a General Land Office brass tablet stamped to identify the corner

Corner References

Nail in Cedar	12	N69°E	48 5 feet
Nail in Hemlock	18	S37°E	39 0 feet
Nail in Red Maple	10	S70°E	27 7 feet
Nail in Red Maple	5	S38°W	11 0 feet
Steel post		N6°W	1 3 feet

9 Quarter Corner to Sections 2-35

Corner is monumented by a 6 round concrete monument with a General Land Office brass tablet stamped to identify the corner

Corner References

Nail in Red Maple	8	N61°E	35 0 feet
Nail in Oak	15	N38°E	20 0 feet
Nail in Red Maple	10	N20°W	28 0 feet
Nail in Hemlock	6	S13°E	58 7 feet
Steel post		S9°W	1 4 feet

10 Corner to Sections 2-3-34-35

Corner is monumented by a 6 round concrete monument with a General Land Office brass tablet stamped to identify the corner

Corner References

Nail in Hemlock	12	S13°E	34 6 feet
Nail in Cedar	8	N20°E	20 1 feet
Nail in Red Pine	9	N37°W	16 8 feet
Nail in Hemlock	7	S71°E	16 1 feet
Nail in Cedar	5	S38°W	22 5 feet
Wood post		S28°E	0 9 feet
Well point	2	N22°E	0 5 feet

Stock No 26273

CORNERS ESTABLISHED

1 Center Quarter Corner to Section 2

Corner is monumented by a 2 aluminum pipe 3 long with a 3 diameter aluminum tablet stamped to identify the corner. Corner is placed at the intersection of the lines connecting the Quarter Corners on the exterior of Section 2.

Corner References

Nail in Maple	12	S32°E	17 3 feet
Nail in Hemlock	9	N30°E	15 0 feet
Nail in Hemlock	15	N80°W	29 4 feet
Steel Post		SOUTH	0 9 feet

2 Center-East 1/16 Corner

Corner is monumented by a 2 aluminum pipe 3 long with a 3 diameter aluminum tablet stamped to identify the corner. Corner is placed on line and equidistant between the Center Quarter Corner and the Quarter Corner to Sections 1-2.

Corner References

Nail in Cedar	11	S21°W	5 6 feet
Nail in Maple	6	N89°E	28 5 feet
Nail in Maple	15	N29°E	26 0 feet
Steel Post		SOUTH	1 0 feet

3 Southeast 1/16 Corner

Corner is monumented by a 2 aluminum pipe 5 long with a 3 diameter aluminum tablet stamped to identify the corner. Corner is placed at the intersection of the lines connecting the 1/16 Corners on the exterior of the Southeast 1/4 of Section 1.

Corner References

Nail in Spruce	5	S37°W	10 8 feet
Nail in Spruce	4	N7°W	24 4 feet
Nail in Spruce	5	N23°E	33 1 feet
Steel Post		NORTH	1 0 feet



Stock No 26273

SURVEYORS AFFIDAVIT

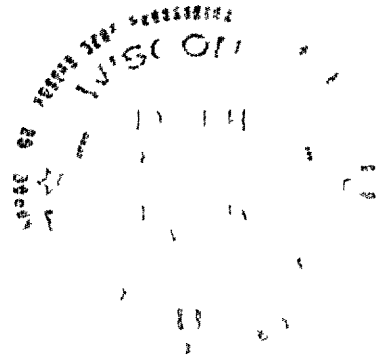
State of Wisconsin)
County of Oneida)ss

I, John H Fisher, Land Surveyor, Registered in the State of Wisconsin, hereby certify That I have surveyed and subdivided Section 2, T38N, R11E, Fourth Principal Meridian, County of Oneida, State of Wisconsin, in accordance with the rules of the survey of the public lands and with the statutes of the State of Wisconsin The plat map and survey notes are an accurate representation of the corners recovered and established

John H Fisher
Registered Land Surveyor,
State of Wisconsin

Certificate No S-836

Date of Survey June, 1984 - March 1985



Plat ready for filing

D. Frank Haubry
District Ranger

411