

L1105



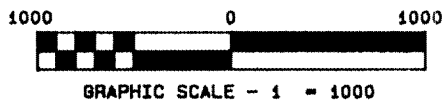
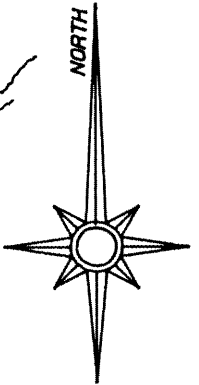
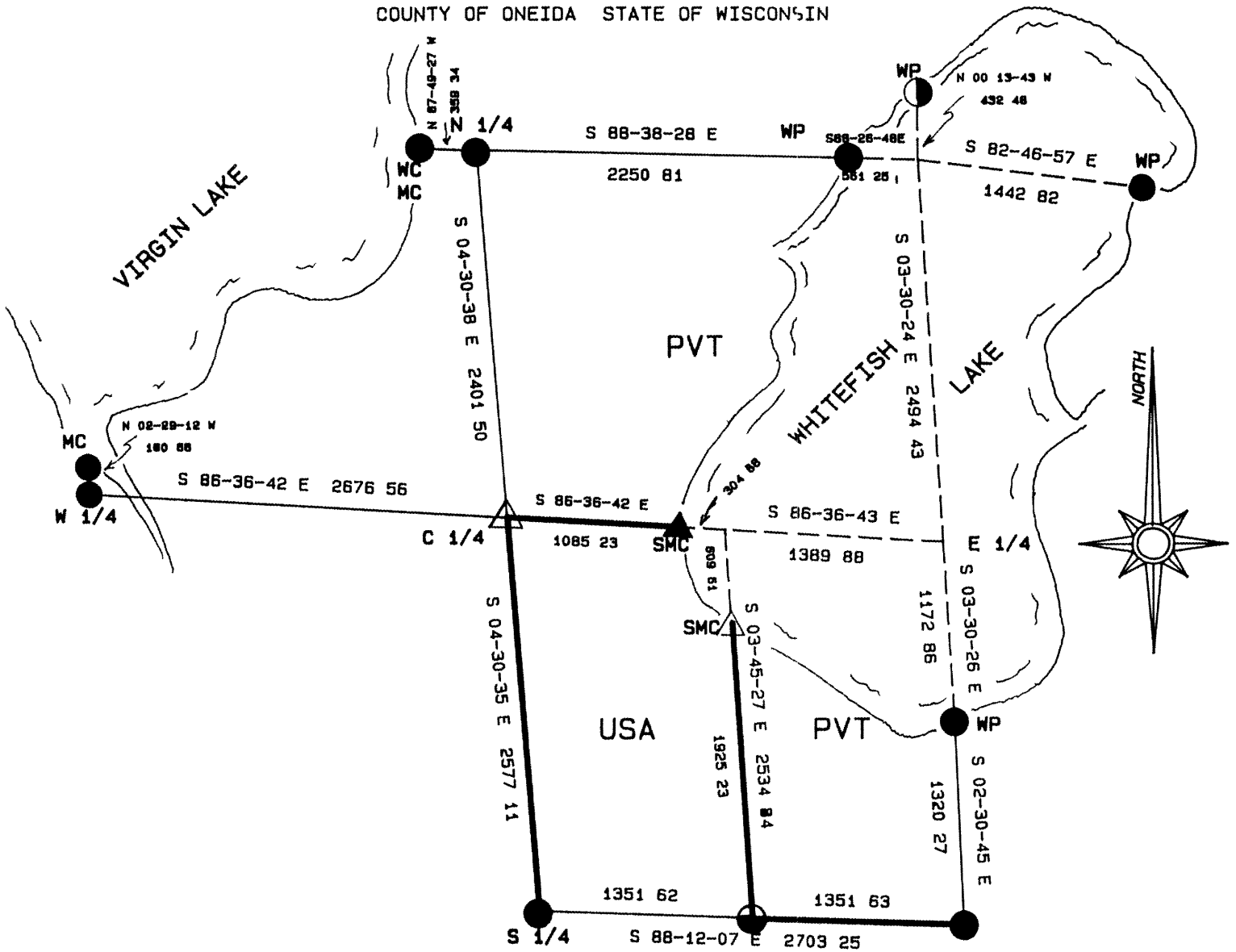
Stock No 26273

PLAT OF SURVEY FOR CERTIFIED LAND CORNER RESTORATION AND ESTABLISHMENT

BEING THE CORNERS FOR THE WEST 1/2 OF THE SE 1/4
AND THE CORNERS ON THE PERIMETER OF THE SECTION

SECTION 14 TOWNSHIP 38 NORTH RANGE 11 EAST

COUNTY OF ONEIDA STATE OF WISCONSIN



LEGEND

- 2 1/2 INCH DIAMETER ALUMINUM PIPE MONUMENT 60 INCHES LONG WITH AN ALUMINUM CAP
- 1 INCH DIAMETER ALUMINUM PIPE MONUMENT 36 INCHES LONG WITH AN ALUMINUM CAP
- 1 INCH DIAMETER ALUMINUM PIPE MONUMENT 60 INCHES LONG WITH AN ALUMINUM CAP
- 2 1/2 INCH DIAMETER GALVANIZED IRON PIPE MONUMENT 60 INCHES LONG WITH BRASS CAP
- CONCRETE MONUMENT WITH BRASS CAP FROM 1941 G L O RESURVEY
- BOUNDARY LINE MARKED TO FOREST SERVICE STANDARD

RECEIVED & FILED # **L1105**
 Date **JUL 14 1990**
 O. J. ... Office

L1105



Stock No 26273

T38N R11E, SECTION 14

page 2 of 5

SURVEY NOTES

This survey was made by the U S Department of Agriculture, Forest Service for the purpose of recovering, restoring, establishing, marking, and perpetuating the corners and boundary lines of U S Government land on the perimeter and within Section 14, Township 38 North, Range 11 East, Fourth Principal Meridian, Oneida County, State of Wisconsin as shown on the Plat map herewith

The U S Government land within Section 14 was acquired in 1931

The original government subdivision of this township was made in 1859

The bearings between corner positions are true bearings as determined by reference to solar observations The accuracy of this survey exceeds the State requirement for closure of 1 in 3,000 Corners recovered or established by this survey are marked as described in the map legend Each monumented corner is referenced to blazed, scribed painted and tagged bearing trees Tie bearings are magnetic and not corrected for declination

The field notes and a copy of the Plat of survey are on file in the Forest Service Supervisor's Office at Rhinelander Wisconsin

CORNERS RECOVERED AND RESTORED

1 Meander Corner between Sections 11 and 14, on West side of Whitefish Lake
 Corner recovered as restored by G L O in 1941

Corner references

| | | | |
|-----------------------|-----|-------|------------|
| Maple | 17" | N21°E | 10 67 feet |
| Oak | 23" | N49 E | 28 44 feet |
| Oak | 16" | S72°W | 30 58 feet |
| SE corner of cottasge | | N87°W | 41 39 feet |

2 Menader Corner between Skections 11 and 12, on North side of Whitefish Lake
 Corner position restored from recovered 1941 G L O bearing trees

Corner references

| | | | |
|---------|-----|-------|------------|
| Hemlock | 13" | N35 E | 58 08 feet |
| Hemlock | 8" | N75 W | 16 17 feet |

3 Meander Corner between Sections 12 and 13 on East side of Whitefish Lake
 Corner recovered as restored by G L O in 1941

Corner references

| | | | |
|--------|-----|-------|------------|
| R Pine | 17" | N43 E | 8 07 feet |
| R Pine | 17" | S80 E | 14 14 feet |
| R Pine | 12" | S01 W | 40 33 feet |
| R Pine | 15" | S35 W | 27 47 feet |

4 Meander Corner between Sections 13 and 14, on South side of Whitefish Lake
 Corner recovered as restored by G L O in 1941

Corner references

| | | | |
|-----------------|-----|-------|------------|
| R Pine | 18" | N69°E | 38 85 feet |
| Tamarack | 10" | S85°E | 54 17 feet |
| W Pine | 24" | S04 W | 31 96 feet |
| Oak | 5" | S51 W | 22 33 feet |
| Steel sign post | | North | 1 00 feet |

1115



Stock No 26273

T38N R11E, Section 14

page 3 of 5

5 Southeast Section Corner

Corner recovered as restored by G L O in 1941 (G L O brass cap decayed and replaced with 2"x60" aluminum pipe monument with an aluminum cap)

Corner references

| | | | |
|-----------------|-----|-------|-------------|
| W Pine | 15" | East | 103 42 feet |
| W Pine | 18" | S10°E | 67 93 feet |
| W Birch | 6" | N79°W | 19 04 feet |
| W Pine | 19" | N37°W | 71 94 feet |
| Steel sign post | | West | 1 00 feet |

6 South Quarter Corner

Corner recovered as restored by G L O in 1941

Corner references

| | | | |
|-----------------|-----|-------|-------------|
| Cedar | 13" | N71 E | 295 68 feet |
| Steel sign post | | West | alongside |

7 West Quarter Corner

Corner recovered as restored by G L O in 1941

Corner references recovered

| | | | |
|--------|-----|-------|------------|
| R Pine | 16" | N34 E | 59 40 feet |
|--------|-----|-------|------------|

New Corner references

| | | | |
|---------------------------|-----|-------|-------------------------|
| Oak | 14" | S68 W | 34 40 feet (not marked) |
| no sign post PVT property | | | |

8 Meander Corner between Sections 14 and 15, South side Virgin Lake

Corner recovered as restored by G L O in 1941

Corner references recovered

| | | | |
|--------|-----|-------|------------|
| R Pine | 15" | S08°E | 64 68 feet |
| R Pine | 12" | S45°W | 92 07 feet |

No sign post placed here

9 Witness Meander Corner between Sections 11 and 14, East side Virgin Lake

Corner recovered as restored by G L O in 1941

Corner references recovered

| | | | |
|--------|-----|-------|------------|
| R Pine | 10" | N19 E | 22 44 feet |
|--------|-----|-------|------------|

New Corner References

| | | | |
|-----------------------|--|-------|------------|
| NW corner of building | | S82 E | 30 20 feet |
|-----------------------|--|-------|------------|

No sign post here

10 North Quarter Corner

Corner recovered as restored by G L O in 1941

Corner references recovered

6" diameter concrete Witness Corner monument

N87 53'W 0 16 chains

References to the Witness Corner

| | | | |
|-------|----|-------|------------|
| Maple | 8" | S03 W | 12 87 feet |
|-------|----|-------|------------|

New Corner references

| | | | |
|-------|-----|-------|------------|
| Maple | 10" | S77 E | 42 47 feet |
|-------|-----|-------|------------|

No sign post placed here

Stock No 26273

T38N R11E SECTION 14

page 4 of 5

CORNERS ESTABLISHED1 East sixteenth Corner between Sections 14 and 23

Corner recovered as established by Jean Resvick in 1969 (corner position monumented with 4"x4" wood post and witnessed by galvanized pipe monument
Corner references

| | | | |
|------------------------------|----|-------------|-------------|
| Witness Corner | | S88 12'07"E | 321 58 feet |
| References to Witness Corner | | | |
| Cedar | 5" | S81°E | 29 64 feet |
| W Birch | 8" | S04°E | 51 81 feet |
| Cedar | 4" | N11°W | 22 53 feet |
| wood post | | South | 1 00 feet |

2 Center-Quarter Corner

Corner position established at the intersection of opposing Quarter Corner positions on the perimeter of the section

Corner references

| | | | |
|-----------------|-----|-------|------------|
| W Birch | 14" | N63°E | 6 19 feet |
| Maple | 11" | S12°E | 23 49 feet |
| Steel sign post | | East | 0 50 feet |

3 Special Meander Corner on West shore of Whitefish Lake

Corner position established on the East-West Center line and at 304 88 feet from the Center-East Sixteenth Corner which falls in the Lake

References to Meander Corner

| | | | |
|--------------------|-----|-------|------------|
| Aspen | 14" | S70°W | 76 76 feet |
| Maple | 6" | N65 W | 67 40 feet |
| (triple east fork) | | | |
| C/L Hwy 32 | | West | 20 70 feet |

4 Special Meander Corner on the South shore of Whitefish Lake

Corner position established at the Lake shore and on line between the East 1/16 between Sections 14 and 23 and the Center-East Sixteenth Corner positions, at a distance of 609 61 feet from the Center-East Corner position

References to Meander Corner

| | | | |
|---------------------|-----|-------|------------|
| Oak | 11" | S20°W | 8 72 feet |
| R Pine | 11" | N67°W | 13 90 feet |
| (double North fork) | | | |
| C/L Hwy 32 | | South | 41 65 feet |
| Lakeshore | | North | 3 00 feet |



Stock No 26273

T38N R11E SECTION 14

page 5 of 5

SURVEYOR'S AFFIDAVIT

State of Wisconsin)
County of Oneida)

I William B Cochrane, Land Surveyor, U S Forest Service and a registered Land Surveyor in the State of Wisconsin hereby certify that I have surveyed and subdivided Section 14 Township 38 North Range 11 East, Fourth Principal Meridian State of Wisconsin

The plat map and survey notes herewith are a correct representation of the land surveyed and divided I have surveyed and subdivided said section in accordance with the rules for the survey of the public lands and with the statutes of the State of Wisconsin



William B Cochrane

Land Surveyor, U S D A Forest Service
R L S State of Wisconsin
Certificate S-1107

Date of Survey 1989

Survey requested by

Pam York
District Ranger

3/1/90
Date