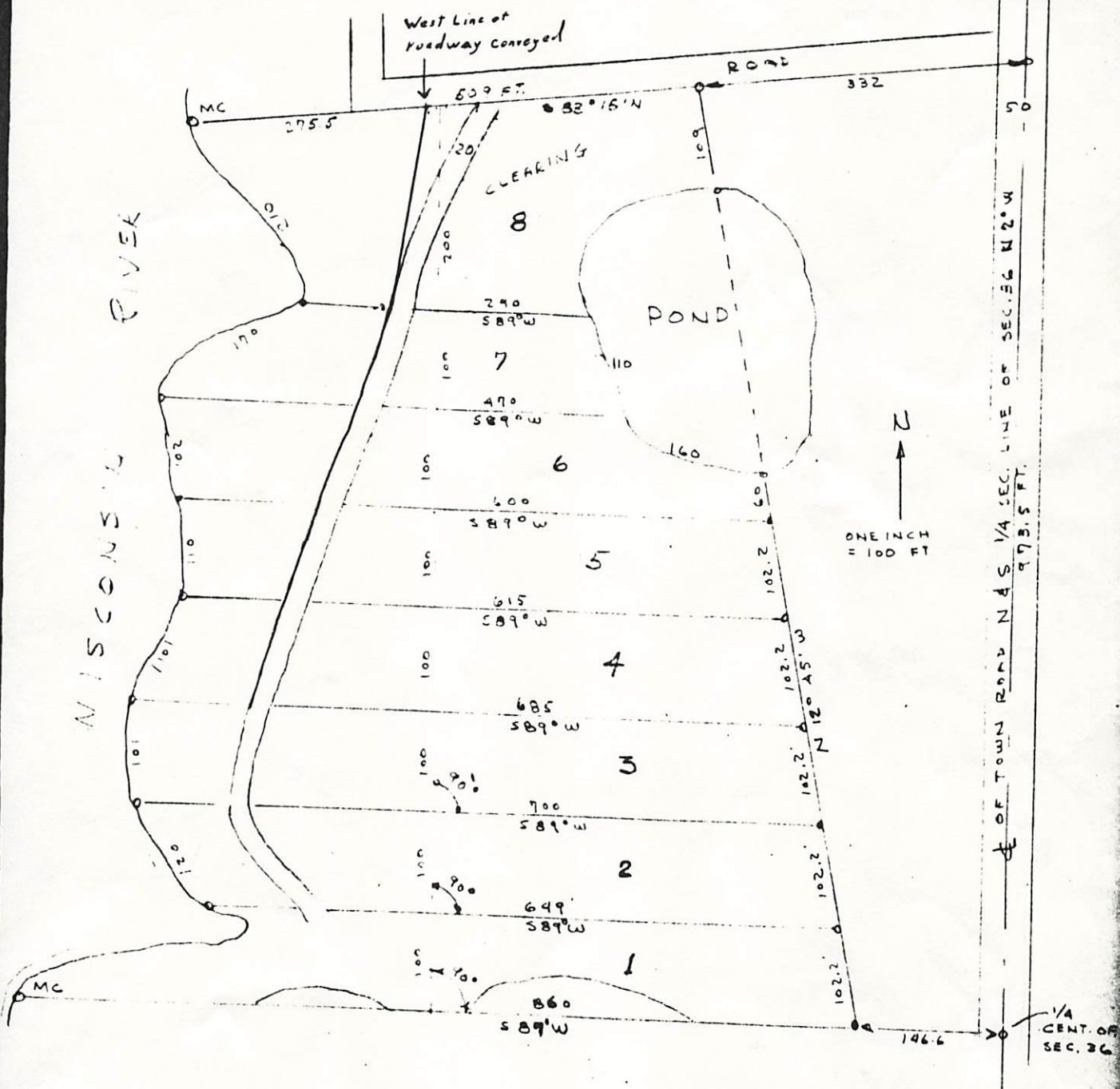


L1109

L1109

KEIL'S SUBDIVISION  
 THAT PART OF GOUT. LOT-4-SEC. 36 T-37N R-8E  
 ONEIDA COUNTY WIS.  
 SURVEYOR. A. J. LYTLE

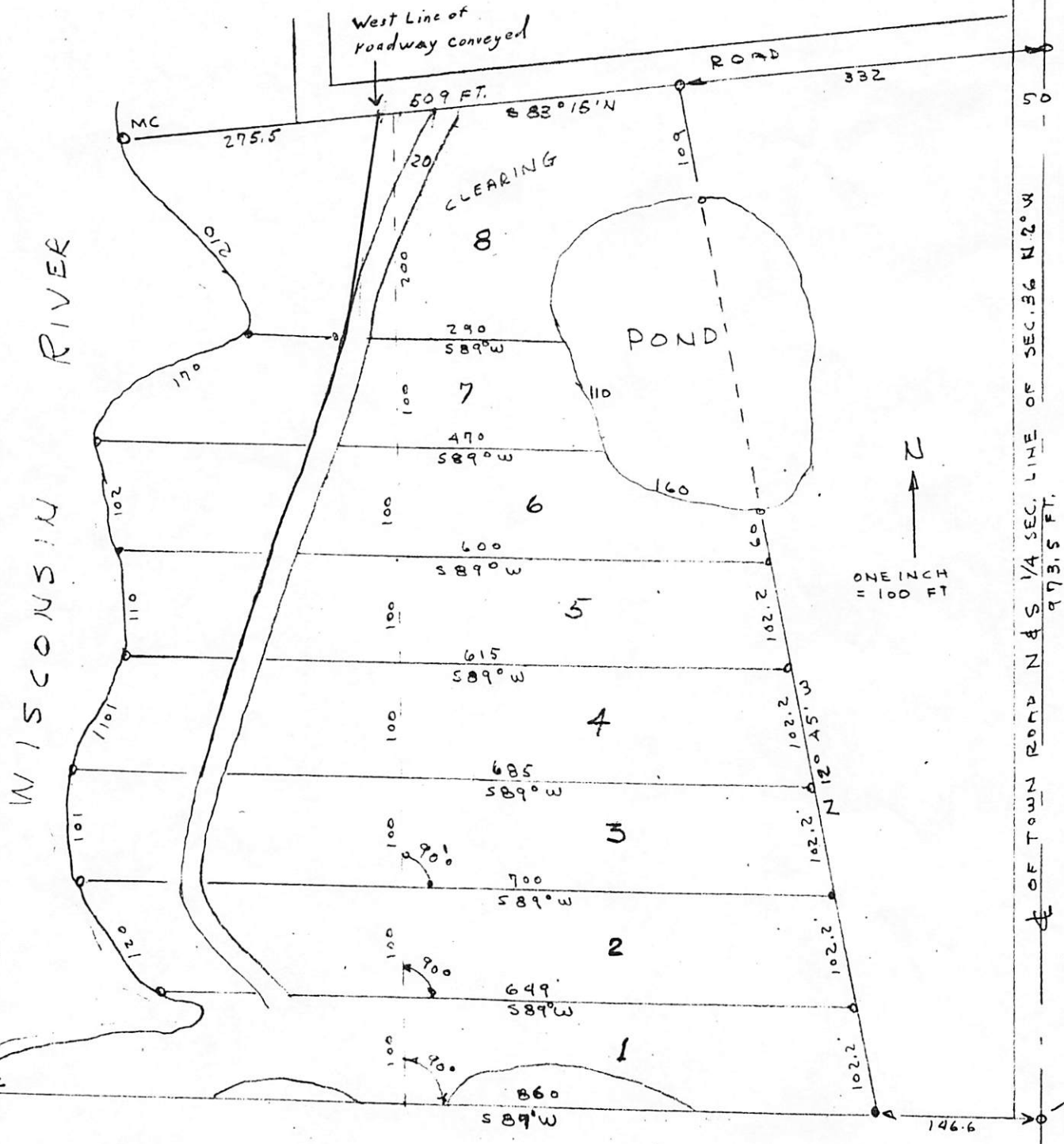


L1109

L1109

ED #  
 Surveyor's Office  
 JUL 31 1990

KEIL'S SUBDIVISION  
 THAT PART OF GOVT. LOT-4-SEC.36 T-37N R-8E  
 ONEIDA COUNTY WIS.  
 SURVEYOR. A.S. LYTLE



1/4  
 CENT  
 SEC

1/4 SEC. LINE OF SEC. 36 N. 2° W

973.5 FT.