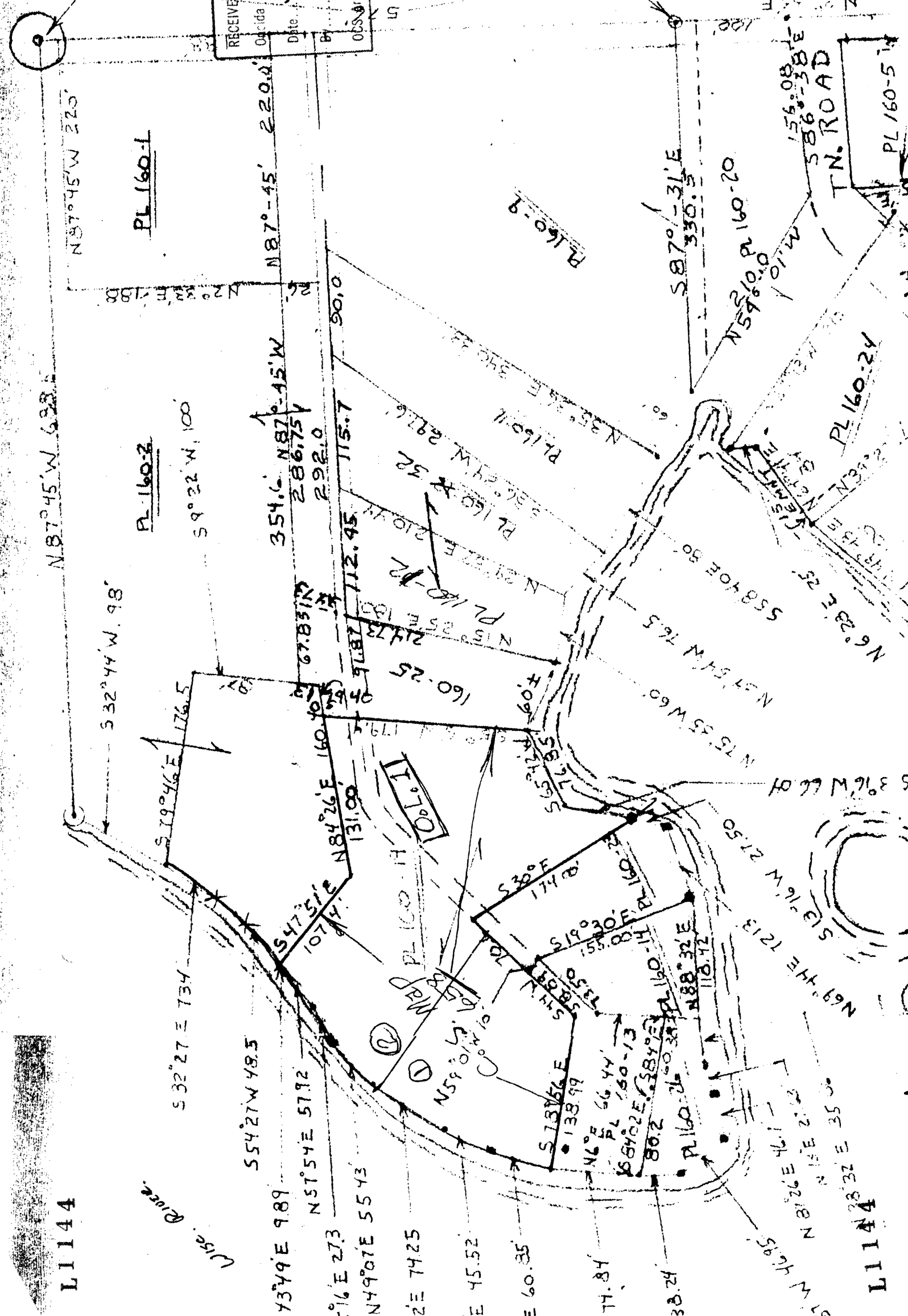


114



PINE LAKE

L1144

RECEIVED & FILED #.....  
 Ocala County Surveyor's Office  
 Date JUN 07 1991  
 Obs Area #.....

1392.47

L1144 A

L1144

USE. RIVER

73749 E 989

16 E 273

N49°07' E 5543

2 E 7425

E 45.52

E 60.35

74.84

33.24

57 W 46.95

L1144

57 W 46.95

N87°45'W 220'

PL 160-1

PL 160-2

532°27' W 98.5

S79°46' E 176.5

S9°22' W 100

S54°27' W 48.5

N57°54' E 57.2

S47°51' E 107.4

N84°26' E 160.4

PL 160-11

PL 160-25

PL 160-22

PL 160-32

PL 160-11

PL 160-11

PL 160-11

PL 160-11

PL 160-11

PL 160-11

PL 160-11

PL 160-11

PL 160-11

PL 160-11

PL 160-11

PL 160-11

PL 160-11

PL 160-11

N87°45'W 220'

N2°33' E 198

N87°-45' 220.0

354.6 N87°-45' W 286.75

292.0 115.7

67.8312

214.73

214.73

214.73

214.73

214.73

214.73

214.73

214.73

214.73

214.73

214.73

214.73

214.73

214.73

214.73

214.73

214.73

214.73

214.73

214.73

N87°45'W 220'

N2°33' E 198

N87°-45' 220.0

354.6 N87°-45' W 286.75

292.0 115.7

67.8312

214.73

214.73

214.73

214.73

214.73

214.73

214.73

214.73

214.73

214.73

214.73

214.73

214.73

214.73

214.73

214.73

214.73

214.73

214.73

214.73

N87°45'W 220'

N2°33' E 198

N87°-45' 220.0

354.6 N87°-45' W 286.75

292.0 115.7

67.8312

214.73

214.73

214.73

214.73

214.73

214.73

214.73

214.73

214.73

214.73

214.73

214.73

214.73

214.73

214.73

214.73

214.73

214.73

214.73

214.73

N87°45'W 220'

N2°33' E 198

N87°-45' 220.0

354.6 N87°-45' W 286.75

292.0 115.7

67.8312

214.73

214.73

214.73

214.73

214.73

214.73

214.73

214.73

214.73

214.73

214.73

214.73

214.73

214.73

214.73

214.73

214.73

214.73

214.73

214.73

N87°45'W 220'

N2°33' E 198

N87°-45' 220.0

354.6 N87°-45' W 286.75

292.0 115.7

67.8312

214.73

214.73

214.73

214.73

214.73

214.73

214.73

214.73

214.73

214.73

214.73

214.73

214.73

214.73

214.73

214.73

214.73

214.73

214.73

214.73

N87°45'W 220'

N2°33' E 198

N87°-45' 220.0

354.6 N87°-45' W 286.75

292.0 115.7

67.8312

214.73

214.73

214.73

214.73

214.73

214.73

214.73

214.73

214.73

214.73

214.73

214.73

214.73

214.73

214.73

214.73

214.73

214.73

214.73

214.73

N87°45'W 220'

N2°33' E 198

N87°-45' 220.0

354.6 N87°-45' W 286.75

292.0 115.7

67.8312

214.73

214.73

214.73

214.73

214.73

214.73

214.73

214.73

214.73

214.73

214.73

214.73

214.73

214.73

214.73

214.73

214.73

214.73

214.73

214.73

N87°45'W 220'

N2°33' E 198

N87°-45' 220.0

354.6 N87°-45' W 286.75

292.0 115.7

67.8312

214.73

214.73

214.73

214.73

214.73

214.73

214.73

214.73

214.73

214.73

214.73

214.73

214.73

214.73

214.73

214.73

214.73

214.73

214.73

214.73

N87°45'W 220'

N2°33' E 198

N87°-45' 220.0

354.6 N87°-45' W 286.75

292.0 115.7

67.8312

214.73

214.73

214.73

214.73

214.73

214.73

214.73

214.73

214.73

214.73

214.73

214.73

214.73

214.73

214.73

214.73

214.73

214.73

214.73

214.73

N87°45'W 220'

N2°33' E 198

N87°-45' 220.0

354.6 N87°-45' W 286.75

292.0 115.7

67.8312

214.73

214.73

214.73

214.73

214.73

</