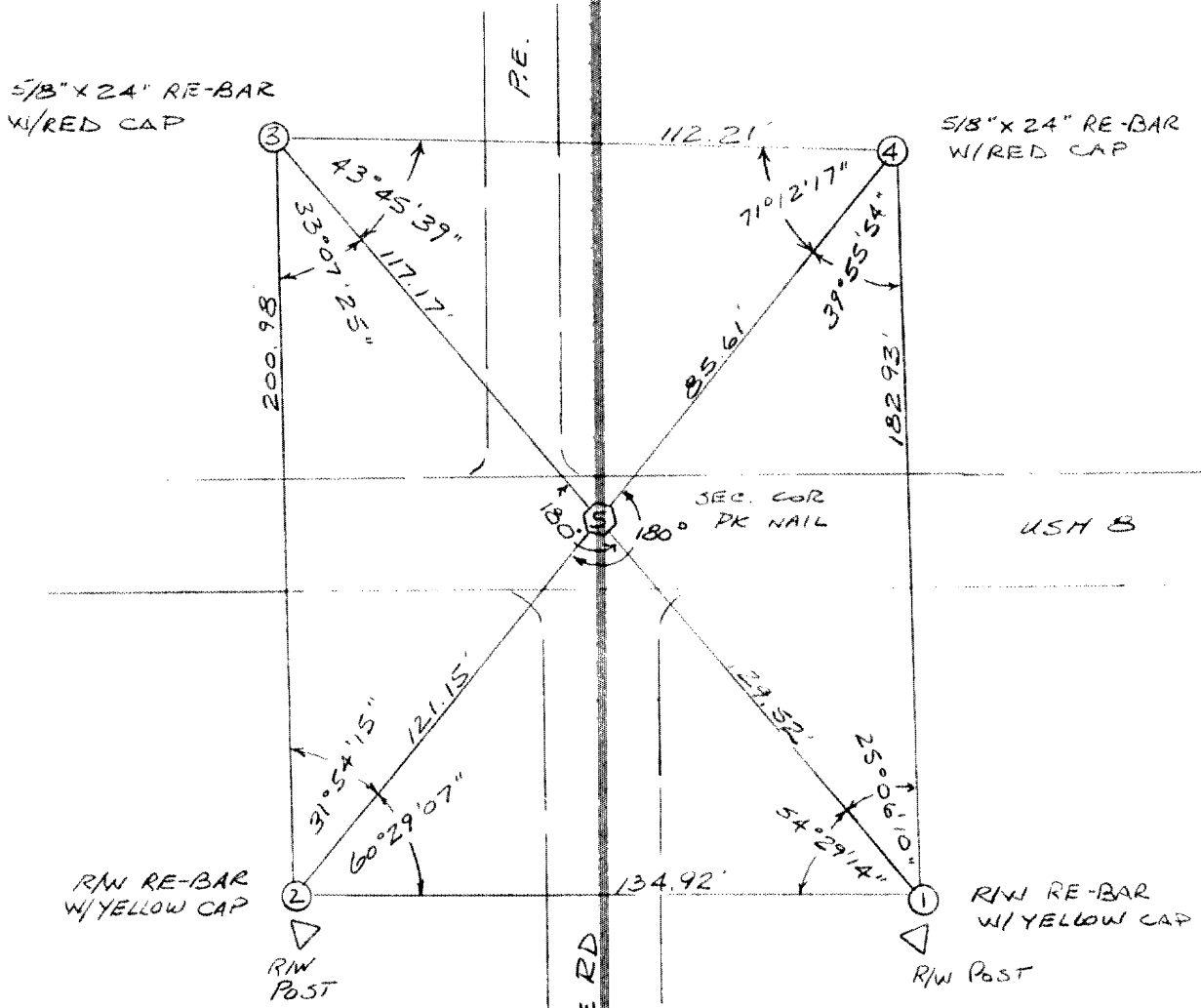


L1146

FIELD SURVEY NOTES

RECEIVED & FILED #.....
 Oneida County Surveyor's Office
 Date **JUN 13 1991**
 By *[Signature]*
 OCS Area #.....

L1146



1-2 =	0°00'00"	-	134.92'
1-3 =	54°29'54"	-	246.69'
1-4 =	79°35'24"	-	182.93'
2-3 =			200.98'
2-4 =			182.93'
3-4 =			112.21'

SEC COR
 T 36 N
 27 | 26
 34 | 35
 R 7 E

COR. V-17

L1146

L1146

- TOPOGRAPHY
- SURVEY ALIGNMENT

1593-04-00 USH 8