

L1166

L1166

# Part of GOV'T. LOT 6 SECTION 15, T39N, R6E

Town of Minocqua  
Oneida County, Wisconsin

## Kawaguesaga

centerline of DNR Bearskin Trail  
per 1977 Wisconsin DNR survey

centerline of 10' wide GTE  
fiber optic easement

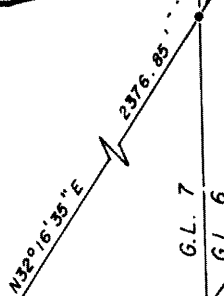
$\Delta = 15^{\circ}29'29''$   
 $R = 1917.08'$

Bearings Solar

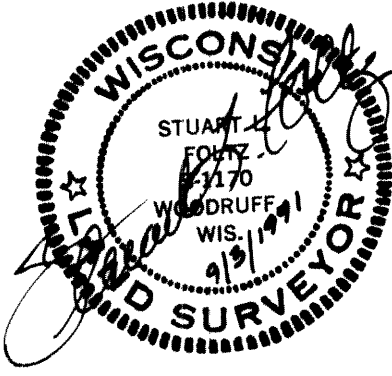
### Lake

$N25^{\circ}33'42.5''E$   
516.76'

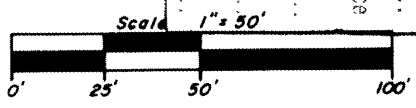
50'



Oneida County Aluminum Monument found



RECEIVED & FILED #.....
Oneida County Surveyor's Office
Date <b>NOV. 07 1991</b>
By <i>[Signature]</i>
OCS Area #.....



Scale 1" = 50'

Inman • Foltz and Associates, Inc.  
architects engineers surveyors

8812 highway 51 north  
minocqua, wisconsin 54848 (715) 356-8485

L1166

L1166