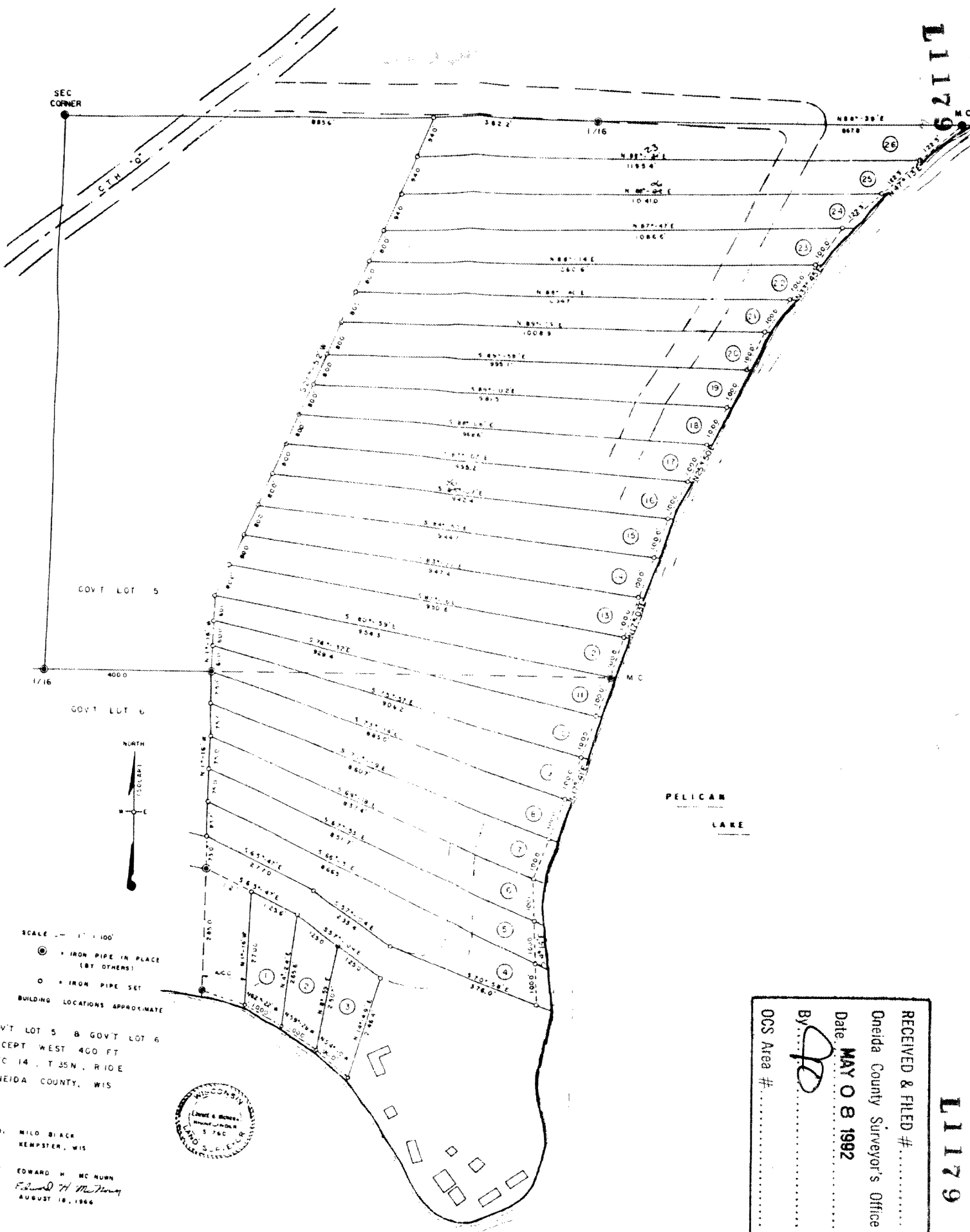


L1179

L1179

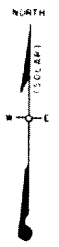


SEC CORNER

GOVT LOT 5

GOVT LOT 6

PELICAN LAKE



SCALE 1" = 100'

● IRON PIPE IN PLACE (BY OTHERS)

○ IRON PIPE SET

BUILDING LOCATIONS APPROXIMATE

GOVT LOT 5 & GOVT LOT 6
EXCEPT WEST 400 FT
SEC 14, T 35N, R 10E
ONEIDA COUNTY, WIS



FOR: WILD BLACK
KEMPSTER, WIS

BY: EDWARD H. MC NURN
Edward H. McNurn
AUGUST 18, 1986

RECEIVED & FILED #

Oneida County Surveyor's Office

Date: MAY 08 1992

By: *SP*

OCS Area #

L1179

L1179