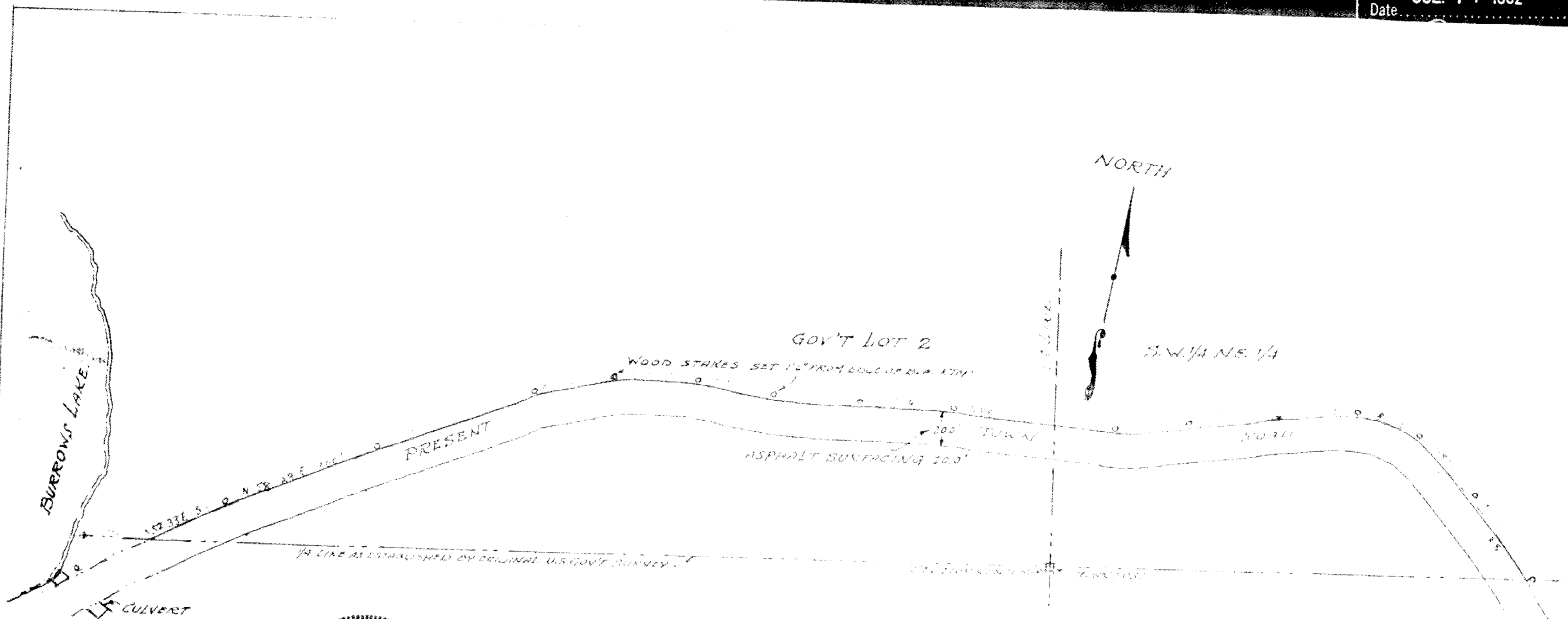


Doc # 173574 Reg of Deeds

P 296A

RECEIVED & FILED #.....
Oneida County Surveyor's Office
Date JUL 17 1992



MAP OF GOV'T LOT 2 & S.W. 1/4 N.E. 1/4 SEC. 3, T.36N. R.5E.
ONEIDA CO. WISCONSIN.



DATE OF SURVEY MAY 27, 1957

DESCRIPTION LOCATING ROAD NORTH END
 BEGINNING AT A POINT WHERE THE EAST AND WEST 1/4 LINE IN SEC. 3 INTERSECTS THE HIGH WATER MARK ON THE EAST SHORE
 OF BURROWS LAKE; THENCE EAST 40.00' TO THE WESTERN BOUNDARY OF THE BLACK TOP SURFACING OF THE TOWN ROAD
 AS NOW LOCATED; THENCE NORTH 52° 33' E. 50.0'; THENCE N. 58° 21' E. 100.0' THN. N 58° 32' E. 100.0', THN N. 62° 30' E. 50.0', THN N. 82° 07' E. 50.0',
 THN N. 89° 48' E. 50.0', THN N. 81° 30' E. 50.0', THN 81° 54' E. 65.0', THN N. 86° 47' E. 100.0', THENCE N. 70° 57' E. 100.0', THN N. 73° 30' E. 50.0',
 THENCE S. 82° 47' E. 40.0', THENCE S. 55° 55' E. 50.0', THENCE S. 43° 09' E. 60.0' TO THE INTERSECTION WITH 1/4 LINE.

SCALE 1" = 50.0 FT.