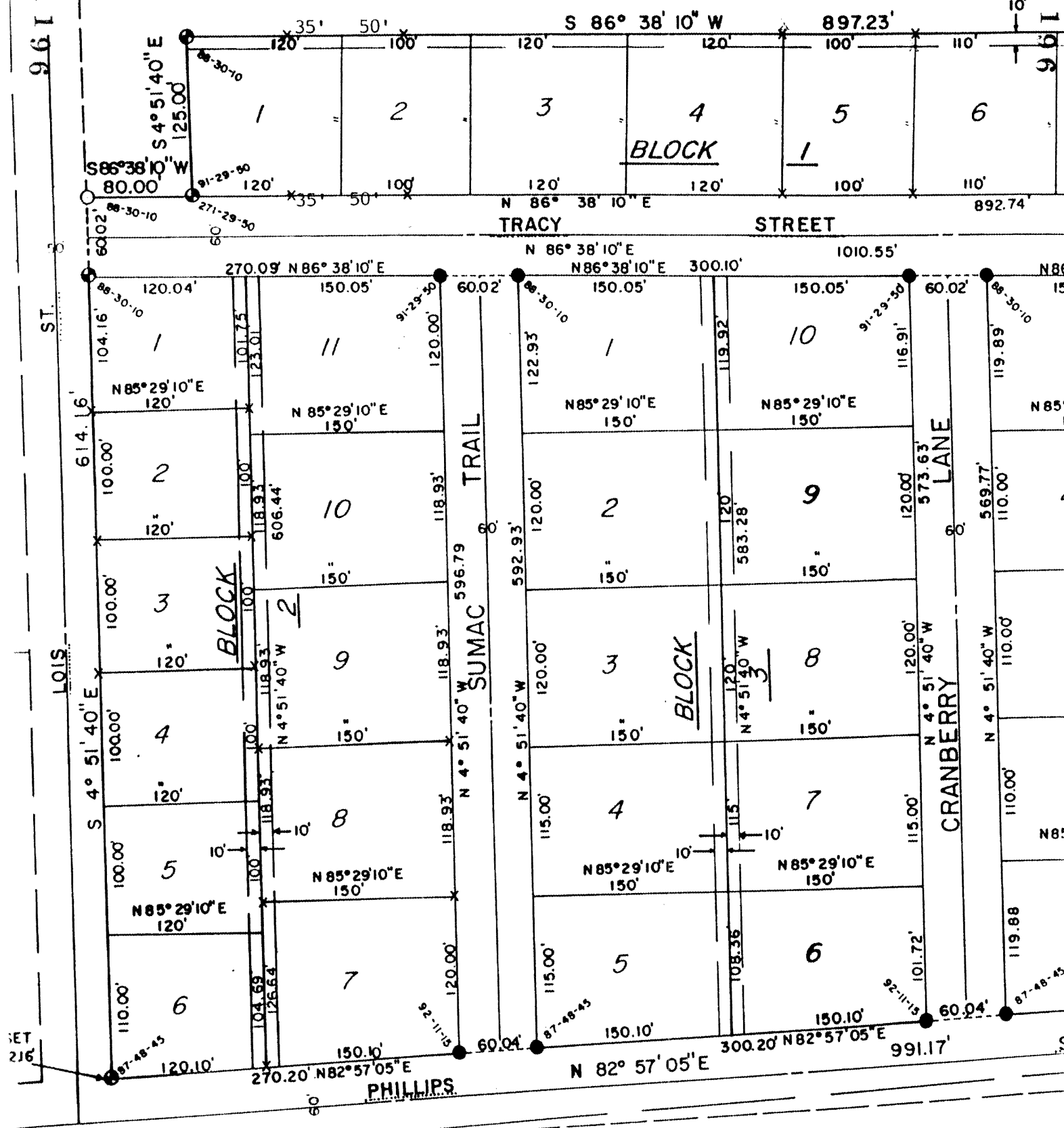


96117

96117



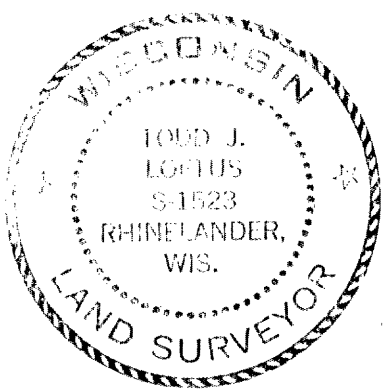
UNPLATTED LANDS

PART OF BLOCKS 1 AND 2 OF HIGHLAND ESTATES

I, Todd Loftus, hereby certify that no actual survey was performed in the locating of the above corner locations marked by a "X" and that iron pipes were found at all locations marked by a "X". I further certify that the above map is a partial copy of the original map of HIGHLAND ESTATES as recorded in the Oneida County Register of Deeds.

6/22/1992

*Todd Loftus*



RECEIVED & FILED #.....  
 Oneida County Surveyor's Office  
 Date **AUG 14 1992**  
 By *[Signature]*  
 OCS Area #.....

1196

1196

1010 B3