

# C/L PROPOSED UNDERGROUND TELEPHONE CABLE ALONG BLUEBIRD ROAD AND COUNTY HIGHWAY 'D' LAKE TOMAHAWK, WISCONSIN

RECEIVED & FILED #  
Oneida County Surveyor's Office

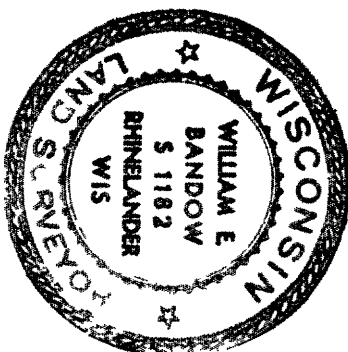
Date  
By  
DCS Area #

L1201 LOCATED IN PART OF SECTIONS 3,10,9,8,17,18,AND 19 ALL IN T38N, R7E,  
TOWN OF LAKE TOMAHAWK, ONEIDA COUNTY, WISCONSIN

I WILLIAM E BANDOW HEREBY CERTIFY THAT I HAVE SURVEYED THE FOLLOWING  
EASEMENT CENTERLINE UNDER THE DIRECTION OF THE RHINELANDER TELEPHONE  
CO AND THAT THE FOLLOWING MAPS ARE A TRUE AND CORRECT REPRESENTATION  
OF THE EASEMENT SURVEYED TO THE BEST OF MY KNOWLEDGE AND BELIEF  
THAT I HAVE PROVIDED A DESCRIPTION OF THE EASEMENT CENTERLINE ON A  
SEPARATE SHEET THAT I HAVE COMPLIED WITH THE PROVISIONS OF AE 7 OF THE  
WISCONSIN ADMINISTRATIVE CODE

*William E Bandow*  
WILLIAM E BANDOW  
DATE 9-11-92

L1201



### NOTE

ALL BEARINGS REFERENCED TO THE N-S 1 4 LINE OF  
SEC 3 T38N R7E AS SHOWN ON SHEET NUMBER 3 OF 17  
ASSUMED TO BEAR N 7°19'38" W  
ALL ROAD INTERSECTION LOCATIONS APPROXIMATE

### LEGEND

- ▲ SET 60 PENNY SPIKE
- FOUND 2 BRASS CAPPED MON
- ⊕ FOUND R/R SPIKE

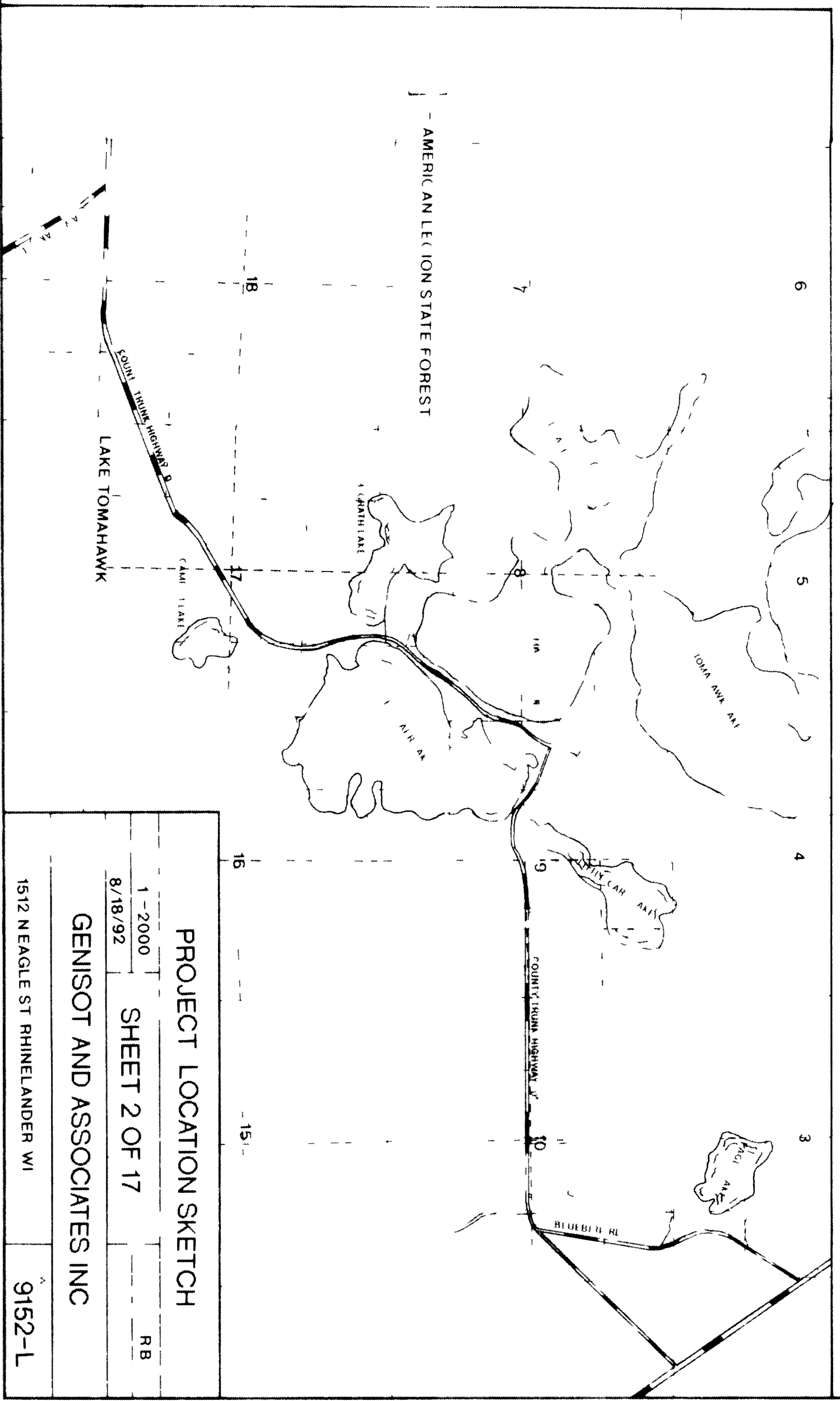
SURVEY FOR  
RHINELANDER TELEPHONE CO

8/1/92	SHEET 1 OF 17	RB
--------	---------------	----

GENISOT AND ASSOCIATES INC

1512 NEAGLE ST RHINELANDER WI

9152



AMERICAN LEGION STATE FOREST

FOUR TRUNK HIGHWAY B  
LAKE TOMAHAWK  
CAMP LAKE

GRAVEL LAKE

AIR LAKE

TOMAHAWK LAKE

FAMILY CAR LAKE

COUNTY TRUNK HIGHWAY J

BLUEBIRD RD

PROJECT LOCATION SKETCH

1-2000

8/18/92

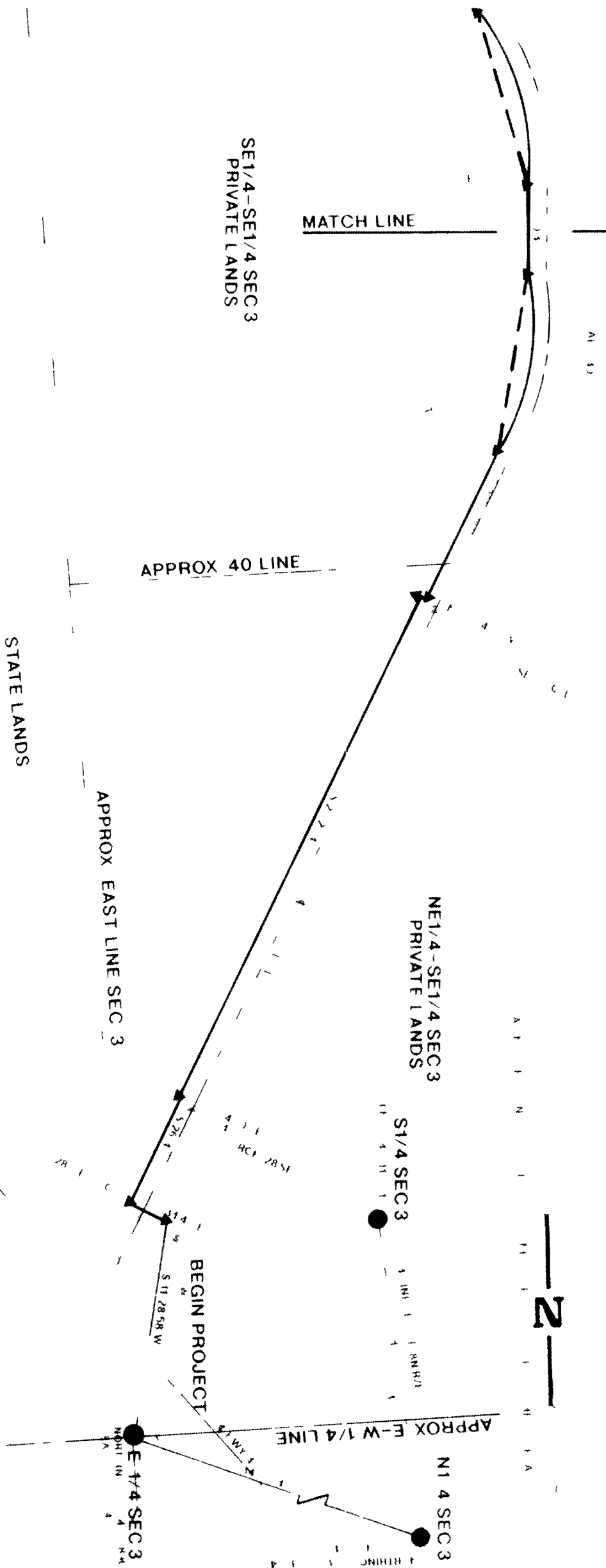
GENISOT AND ASSOCIATES INC

RB

1512 NEAGLE ST RHINELANDER WI

9152-L

# PART OF THE SE1/4 SEC.3, T38N, R7E



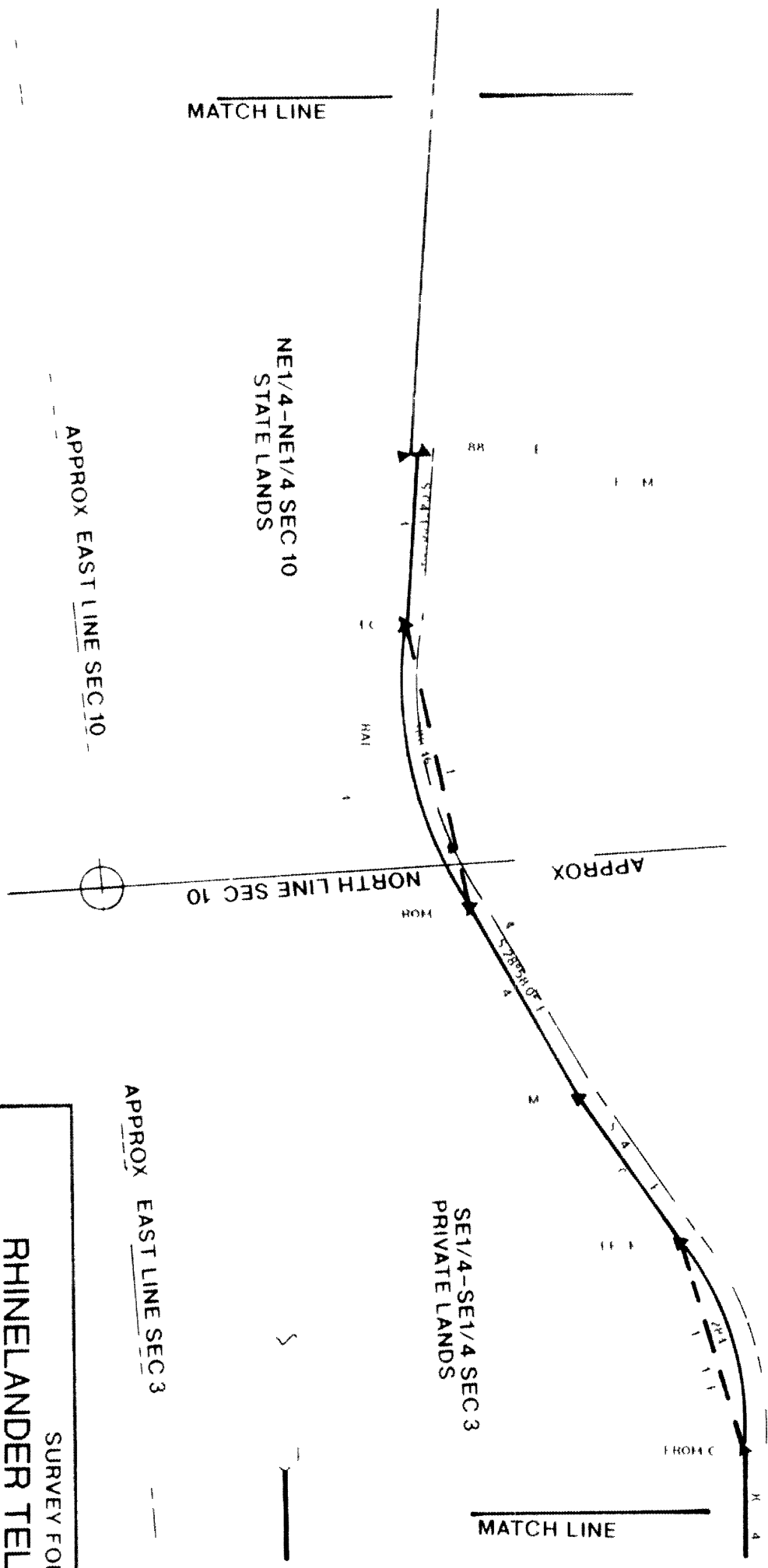
GPS IN AIRSTRIP  
 NORTHING = 57644.44351  
 EASTING = 39304.13431

GPS ON FAWN LAKE ROAD  
 NORTHING = 31228.00017  
 EASTING = 33126.92810

SURVEY FOR  
**RHINELANDER TELEPHONE CO**  
 SHEET 3 OF 17  
 RB  
 8/18 92

**GENISOT AND ASSOCIATES INC**  
 1512 NEAGLE ST RHINELANDER WI 54870  
 9152-1

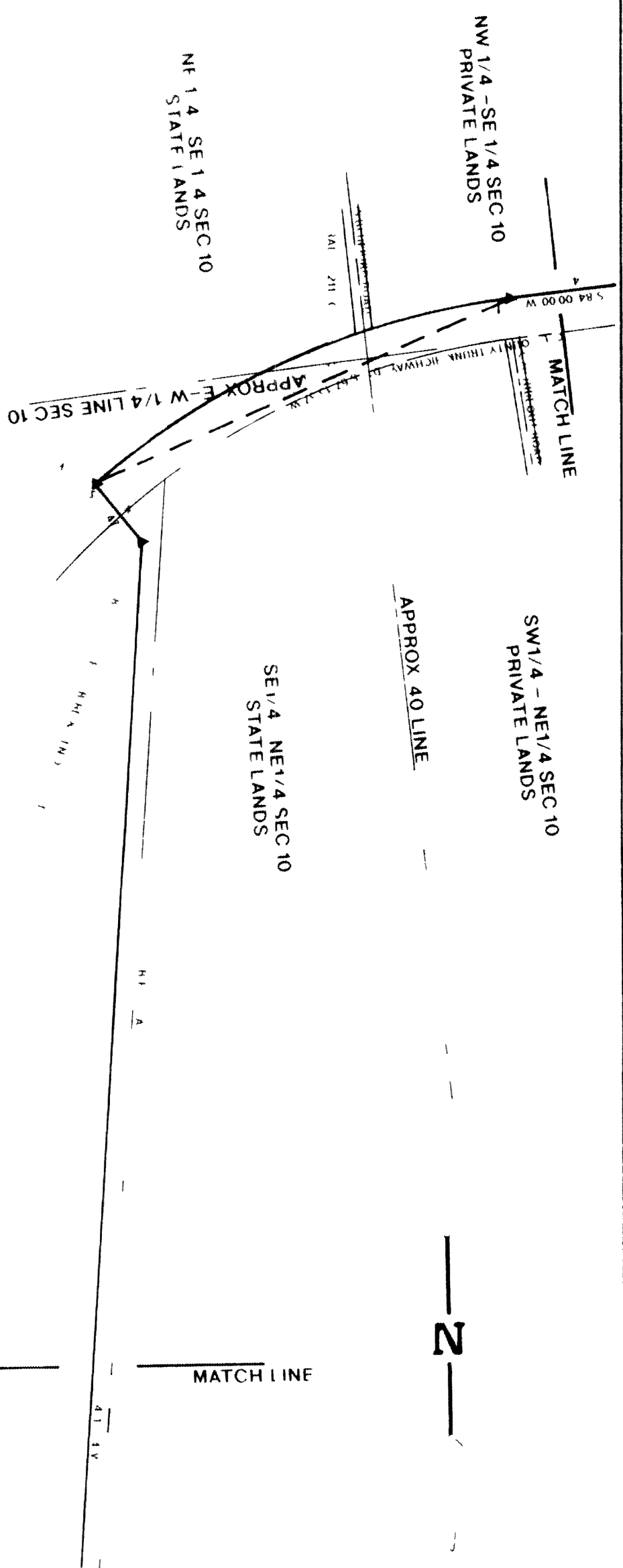
# PART OF THE SE1/4 SEC.3 AND NE1/4 SEC.10, T38N,R7E



APPROX EAST LINE SEC 3



SURVEY FOR			
RHINELANDER TELEPHONE CO			
1 = 200	AT	E 13	RB
8 1/92	SHEET 4 OF 17		8 18 92
GENISOT AND ASSOCIATES INC			
1512 NEAGLE ST RHINELANDER WI		9152-2	



**PART OF THE NE 1/4  
AND PART OF THE SE 1/4  
SEC. 10, T38N, R7E**

SURVEY FOR		Rhinelanders Telephone Co	
1 = 200	8/1/92	V E T	BY RB
SHEET 5 OF 17		8/18 92	

**GENISOT AND ASSOCIATES INC**

1512 NEAGLE ST RHINELANDER WI 9152-3

# PART OF SEC.10, T38N,R7E



SE1/4-NW1/4 SEC 10  
STATE LANDS

NE1/4-SW1/4 SEC 10  
STATE LANDS

SW1/4-NE1/4 SEC 10  
PRIVATE LANDS

NW1/4-SE1/4 SEC 10  
PRIVATE LANDS

APPROX 40 LINE

MATCH LINE

APPROX N-S 1/4 LINE SEC 10

APPROX E-W 1/4 LINE SEC 10

84.00' OR W

R M

MATCH LINE

SURVEY FOR  
RHINELANDER TELEPHONE CO

1 = 200	A P	1	RB
8/1/92	SHEET 6 OF 17		8 18/92

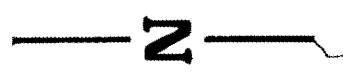
GENISOT AND ASSOCIATES INC

1512 NEAGLE ST RHINELANDER WI

AN NI REF  
9152-4

# PART OF SECTIONS 9 AND 10, T38N,R7E

E 1/4 NW 1/4 SEC 9  
STATE LANDS



WEST 1/4 SEC 10 T38N R7E  
NORTHING = 45830 560  
EASTING = 42756 875

SW 1/4-NW 1/4 SEC 10  
STATE LANDS

NW 1/4-SW 1/4 SEC 10  
STATE LANDS

NE 1/4-SE 1/4 SEC 9  
STATE LANDS

MATCH LINE

APPROX W 1/4 LINE OF SEC 9

APPROX WEST LINE OF SEC 10

N 11 21 18  
/ R

APPROX E-W 1/4 LINE OF SEC 10

APPROX 40 LINE

MATCH LINE

SURVEY FOR		
RHINELANDER TELEPHONE CO		
1 = 200	R E B	
8/1/92	SHEET 7 OF 17	8 18 92
GENISOT AND ASSOCIATES INC		
1512 NEAGLE ST RHINELANDER WI		9152-5

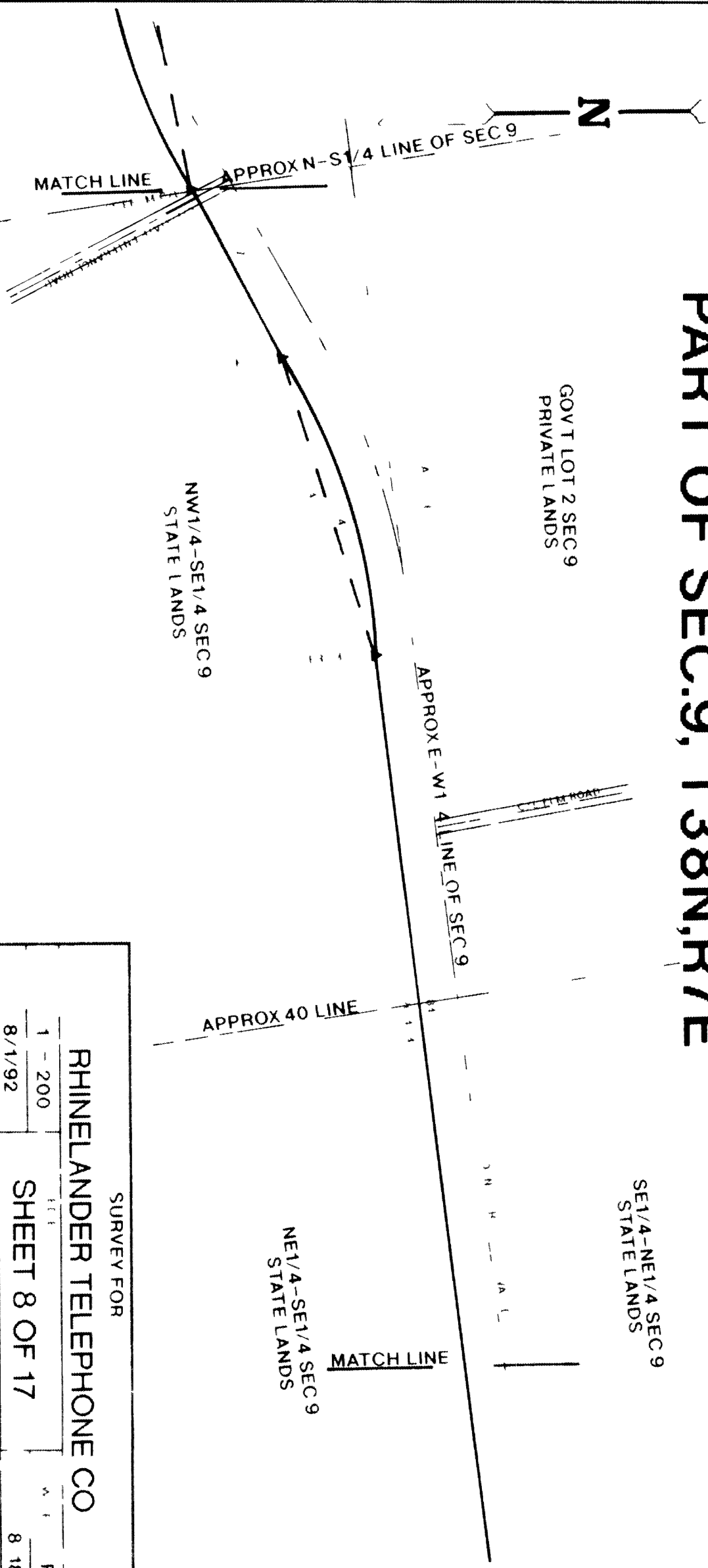
# PART OF SEC.9, T38N,R7E

GOVT LOT 2 SEC 9  
PRIVATE LANDS

SE1/4-NE1/4 SEC 9  
STATE LANDS

NW1/4-SE1/4 SEC 9  
STATE LANDS

NE1/4-SE1/4 SEC 9  
STATE LANDS



SURVEY FOR

RHINELANDER TELEPHONE CO

1 - 200	RB
8/1/92	8 18 92

GENISOT AND ASSOCIATES INC

1512 NEAGLE ST RHINELANDER WI

9152-6



CORRECTIONAL FACILITY  
GOV T LOT 5 SEC 9

# PART OF SEC.9, T38N,R7E

CORRECTIONAL FACILITY  
GOV T LOT 6 SEC 9

CORRECTIONAL FACILITY  
GOV T LOT 3 SEC 9

APPROX 40 LINE

APPROX N-S 1/4 LINE OF SEC 9

MATCH LINE

MATCH LINE

BIG CARR LAKE



SURVEY FOR  
RHINELANDER TELEPHONE CO

1" = 200'	RB
8/1/92	8/18 92

GENISOT AND ASSOCIATES INC

1512 NEAGLE ST RHINELANDER WI 9152-7

# PART OF SEC.8 AND SEC.9, T38N,R7E

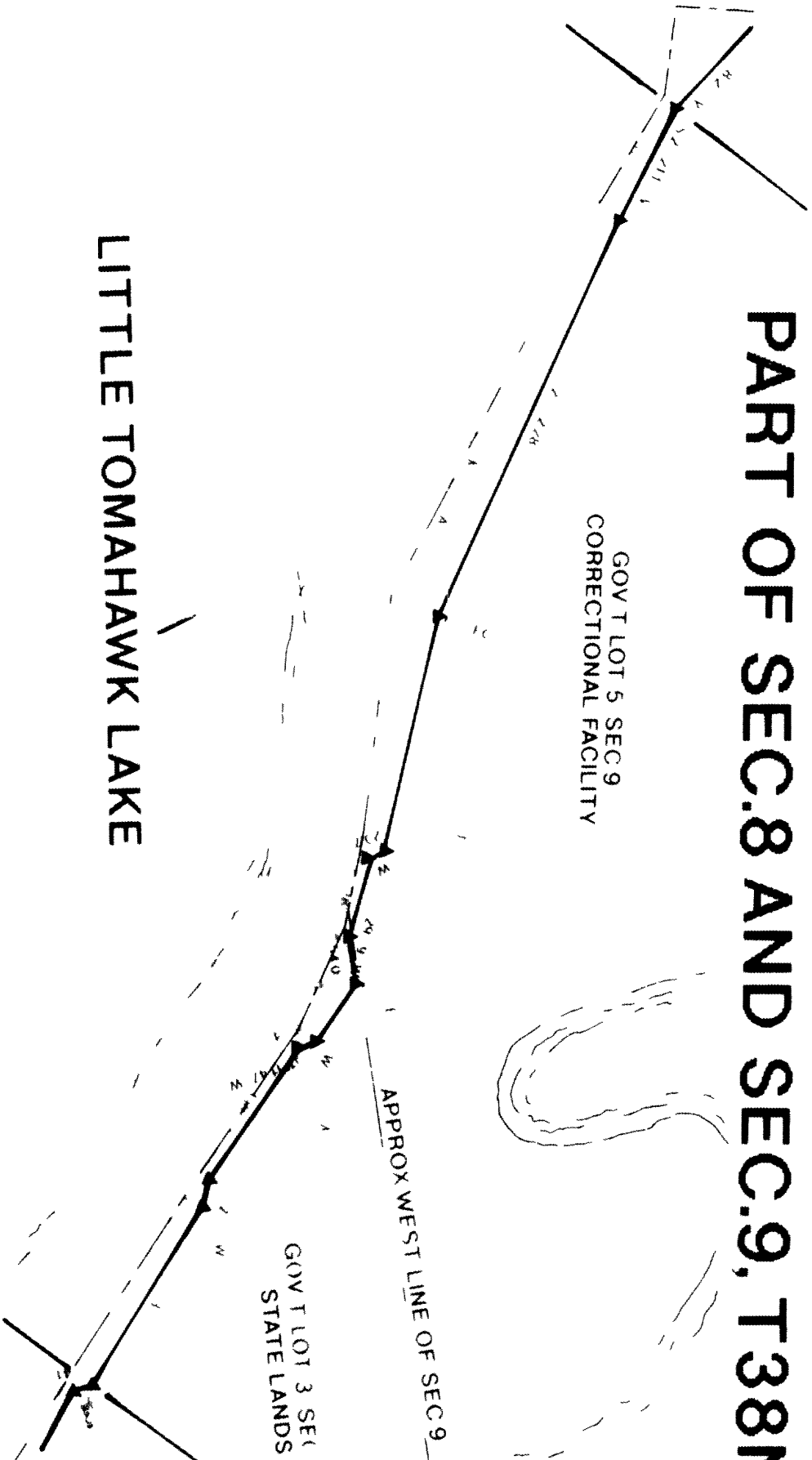
GOV T LOT 5 SEC 9  
CORRECTIONAL FACILITY

BIG CARR LAKE

APPROX WEST LINE OF SEC 9

GOV T LOT 3 SEC 8  
STATE LANDS

LITTLE TOMAHAWK LAKE

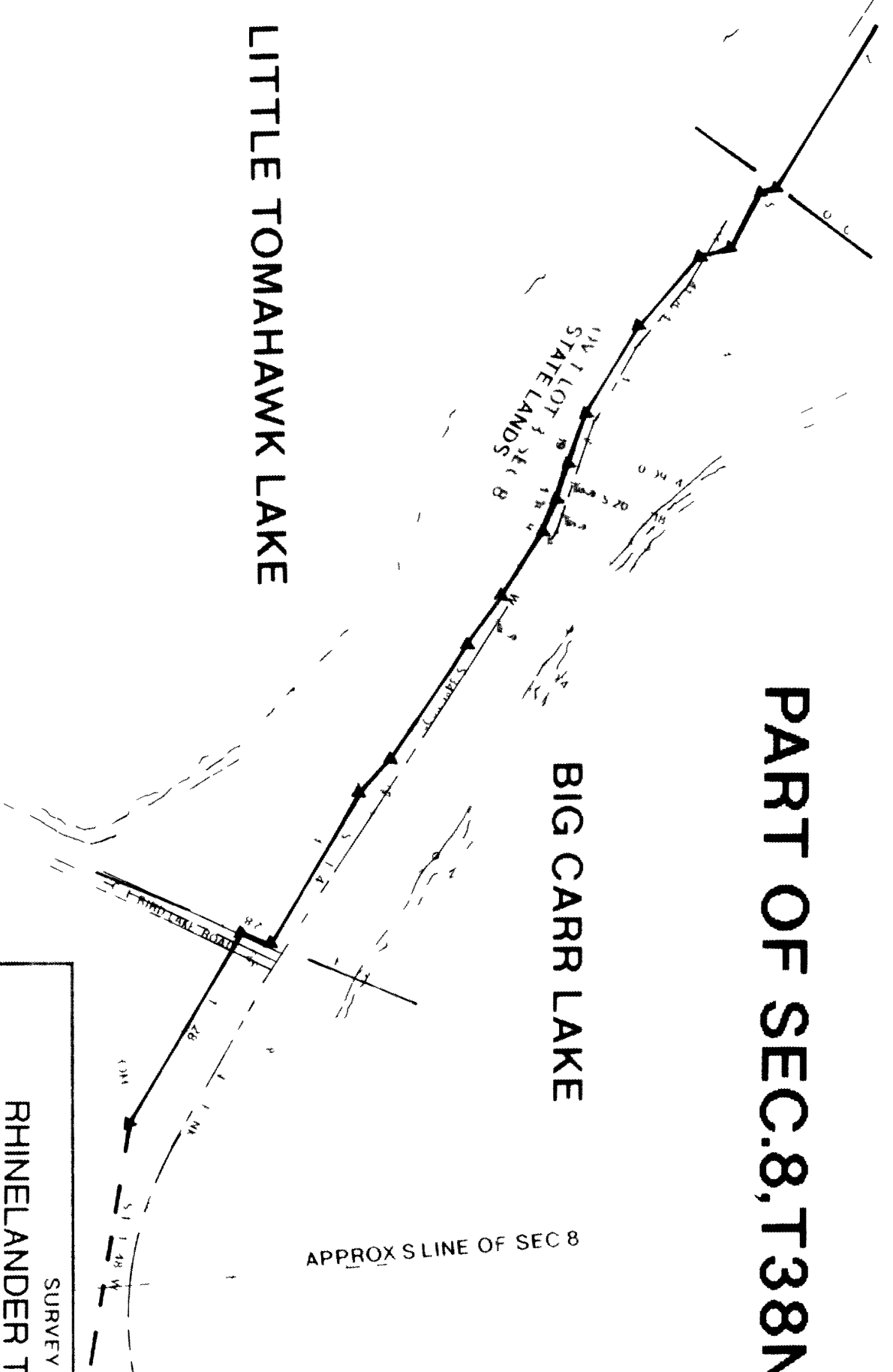


SURVEY FOR	
RHINELANDER TELEPHONE CO	
1 = 200	ET
8 1/92	SHEET 10 OF 17
GENISOT AND ASSOCIATES INC	
1512 NEACLE ST RHINELANDER WI	9152-8
	RB
	8 18 92

# PART OF SEC.8,T38N,R7E

## LITTLE TOMAHAWK LAKE

## BIG CARR LAKE



APPROX S LINE OF SEC 8

GOV T LOT 2 SEC 17  
PRIVATE LANDS



SURVEY FOR

RHINELANDER TELEPHONE CO

1 = 200		RB
8/1/92	SHEET 11 OF 17	8 18 92

GENISOT AND ASSOCIATES INC

1512 NEAGLE ST RHINELANDER WI 9152-9

# PART OF SEC.8 AND 17, T38N,R7E

## BIG CARR LAKE

LITTLE TOMAHAWK LAKE

GOV T LOT 4 SEC 8  
STATE LANDS

## MCGRATH LAKE

APPROX LINE OF SEC 8

PRIVATE LANDS

GOV T LOT 2 SEC 17  
STATE LANDS



1 = 200  
8 1 92

SURVEY FOR  
RHINELANDER TELEPHONE CO  
SHEET 12 OF 17

RB  
8 18 92

GENISOT AND ASSOCIATES INC

1512 NEAGLE ST RHINELANDER WI

9152-10

GOV T LOT 1 SEC 17  
PRIVATE LANDS

# PART OF SEC.17, T38N, R7E

APPROX 40 INF

SE1/4-NE1/4 SEC 17  
PRIVATE LANDS

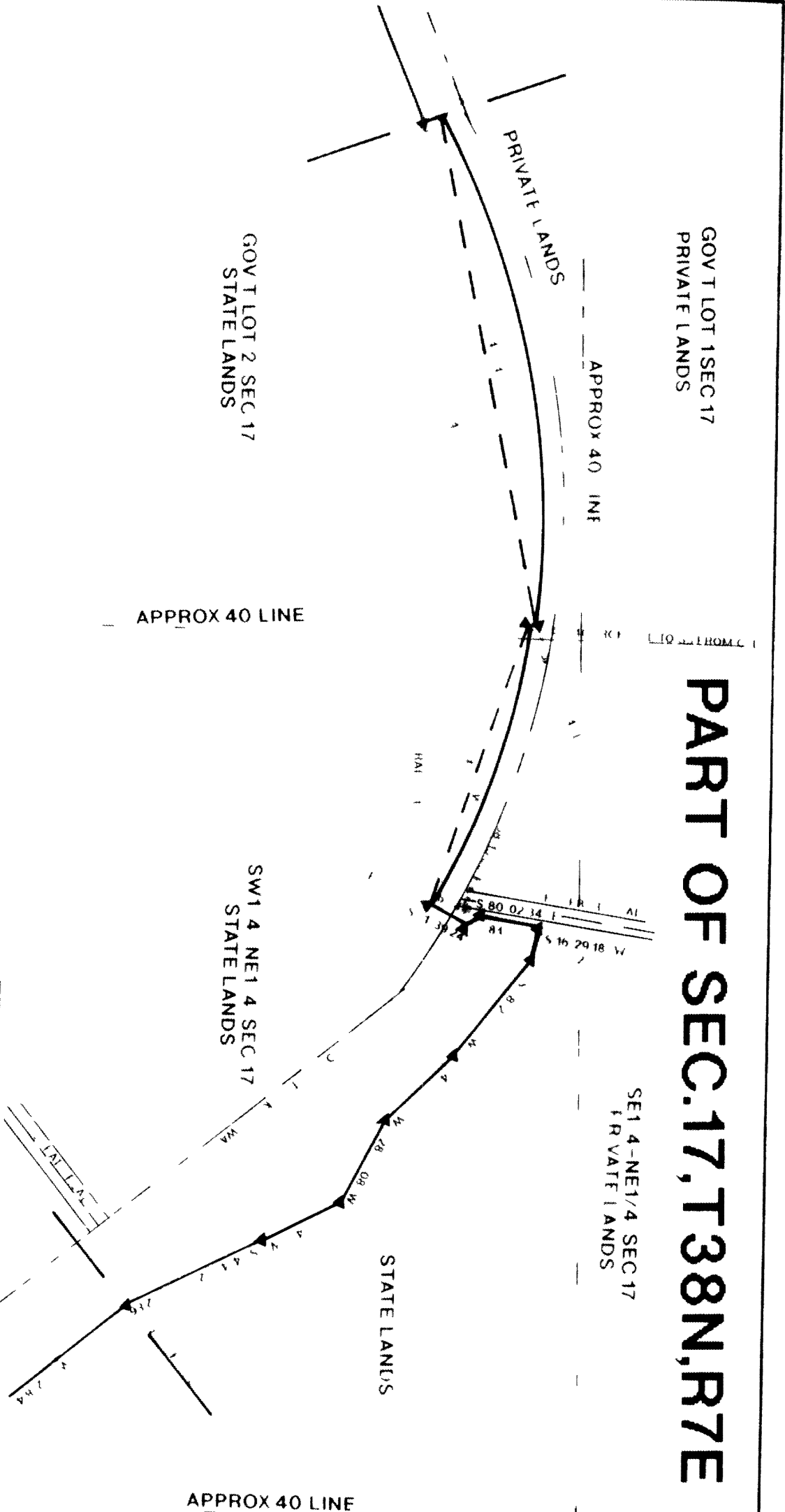
STATE LANDS

GOV T LOT 2 SEC 17  
STATE LANDS

SW1/4 NE1/4 SEC 17  
STATE LANDS

APPROX 40 LINE

APPROX 40 LINE



SURVEY FOR

RHINELANDER TELEPHONE CO

1" = 200'  
8/1/92

SHEET 13 OF 17

RB  
8/18/92

GENISOT AND ASSOCIATES INC

1512 NEAGLE ST RHINELANDER WI

9152-11

# PART OF SEC.17,T38N,R7E



SE1/4-NW1/4 SEC 17  
STATE LANDS

NE1/4-SW1/4 SEC 17  
STATE LANDS

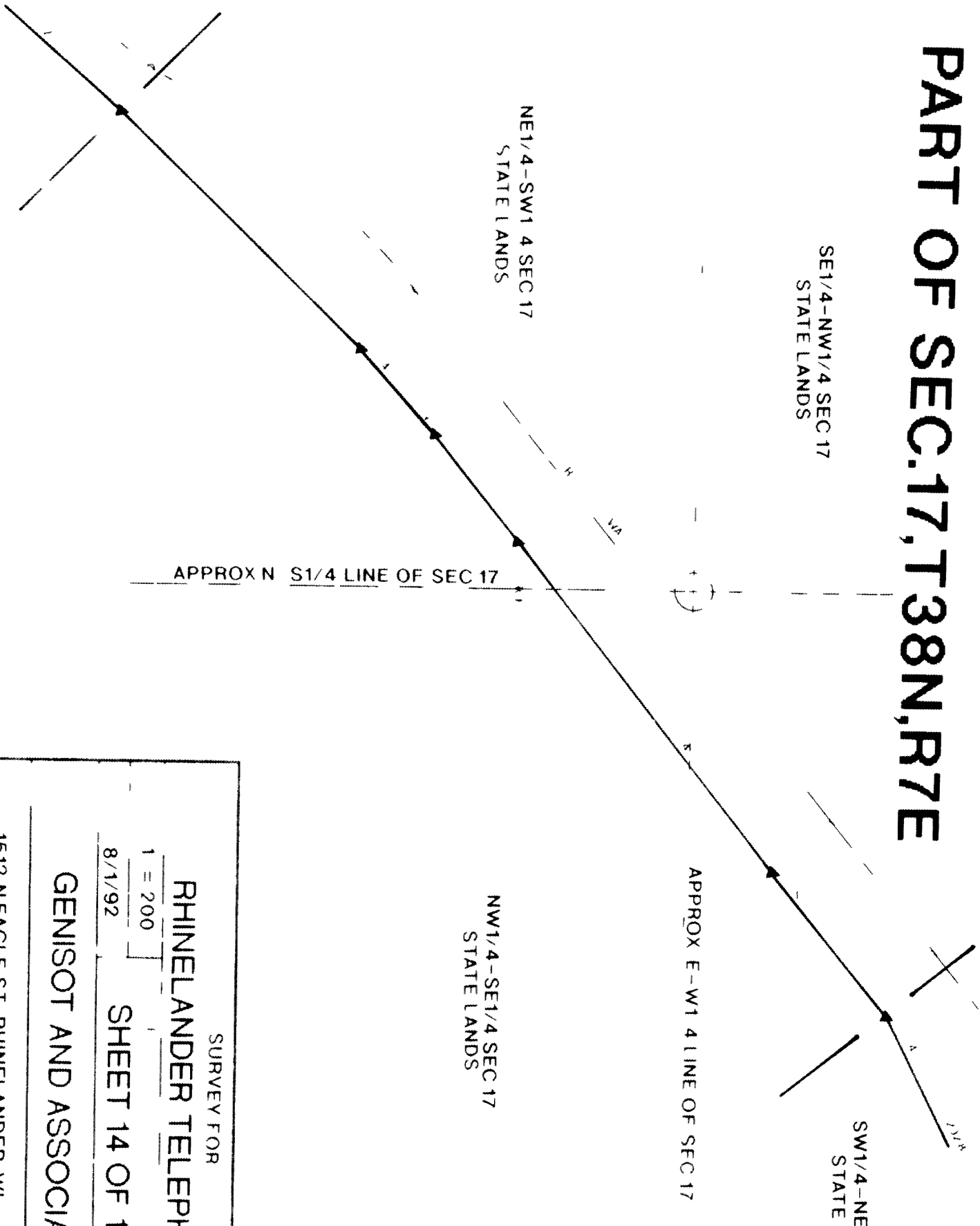
NW1/4-SE1/4 SEC 17  
STATE LANDS

SW1/4-NE1/4 SEC 17  
STATE LANDS

APPROX N S1/4 LINE OF SEC 17

APPROX E-W1/4 LINE OF SEC 17

APPROX 40 LINE



SURVEY FOR

**RHINELANDER TELEPHONE CO**

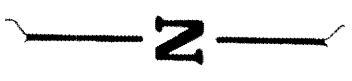
1 = 200

8/1/92 SHEET 14 OF 17 RB

**GENISOT AND ASSOCIATES INC**

1512 NEAGLE ST RHINELANDER WI 9152-12

# PART OF SEC.17,T38N,R7E



APPROX WEST LINE OF SEC 17

NW1/4-SW1/4 OF SEC 17  
STATE LANDS

APPROX 40 LINE

SW1 4-SW1/4 OF SEC 17  
STATE LANDS

APPROX 40 LINE

SE1/4-SW1/4 OF SEC 17  
STATE LANDS

NE1/4-SW1/4 OF SEC 17  
STATE LANDS

L1201

SURVEY FOR

**RHINELANDER TELEPHONE CO**

1 - 200	R	I
8/1/92	SHEET 15 OF 17	
	R B	8 18 92

**GENISOT AND ASSOCIATES INC**

1512 NEAGLE ST RHINELANDER WY **L1201** 9152-13

L1201

# PART OF SECTIONS 17,18,AND 19,T38N,R7E

L1201



APROX 40 LINE

SW 1/4 SE 1/4 OF SEC 18  
STATE LANDS

NW 1/4 NE 1/4 OF SEC 19  
STATE LANDS

SE 1/4-SE 1/4 OF SEC 18  
STATE LANDS

NE 1/4-NE 1/4 OF SEC 19  
STATE LANDS

APPROX SOUTH LINE OF SEC 18

APPROX WEST LINE OF SEC 17

SW 1/4 SW 1/4 OF SEC 17  
STATE LANDS

APPROX SOUTH LINE OF SEC 17

L1201

SURVEY FOR

**RHINELANDER TELEPHONE CO**

1 = 200	SHEET 16 OF 17	RB
8 1 92		8 18/92

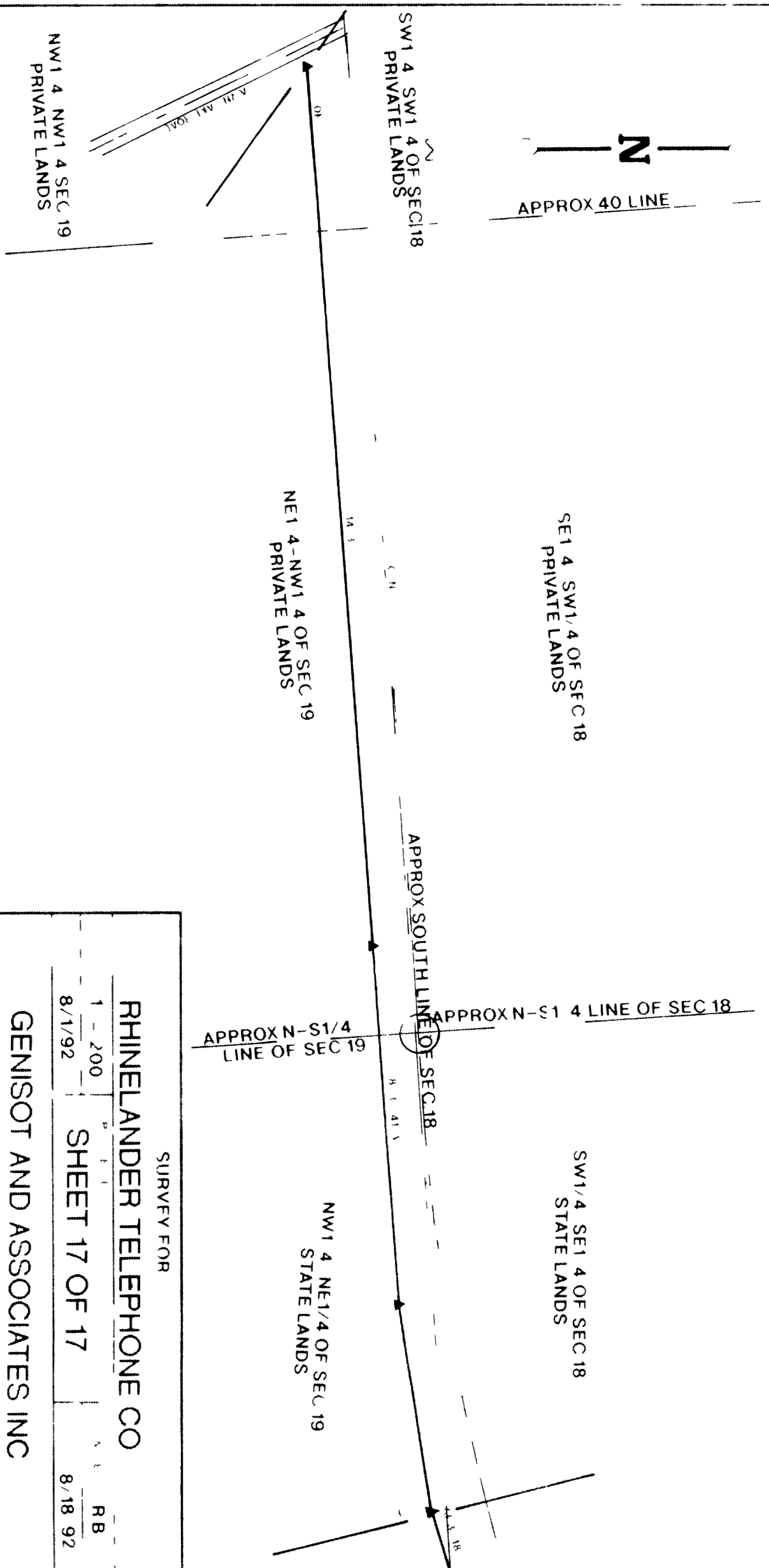
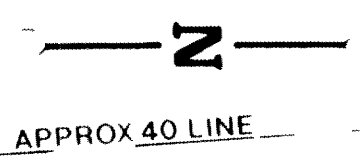
**GENISOT AND ASSOCIATES INC**

1512 NEAGLE ST RHINELANDER WI      9152-14

L1201



# PART OF SEC.18 AND 19,T38N,R7E



SURVEY FOR	
RHINELANDER TELEPHONE CO	
1 - 200	RB
8/1/92	8/18 92
GENISOT AND ASSOCIATES INC	
1512 NEAGLE ST RHINELANDER WI	9152-15