

L1210

August 14 - 1944

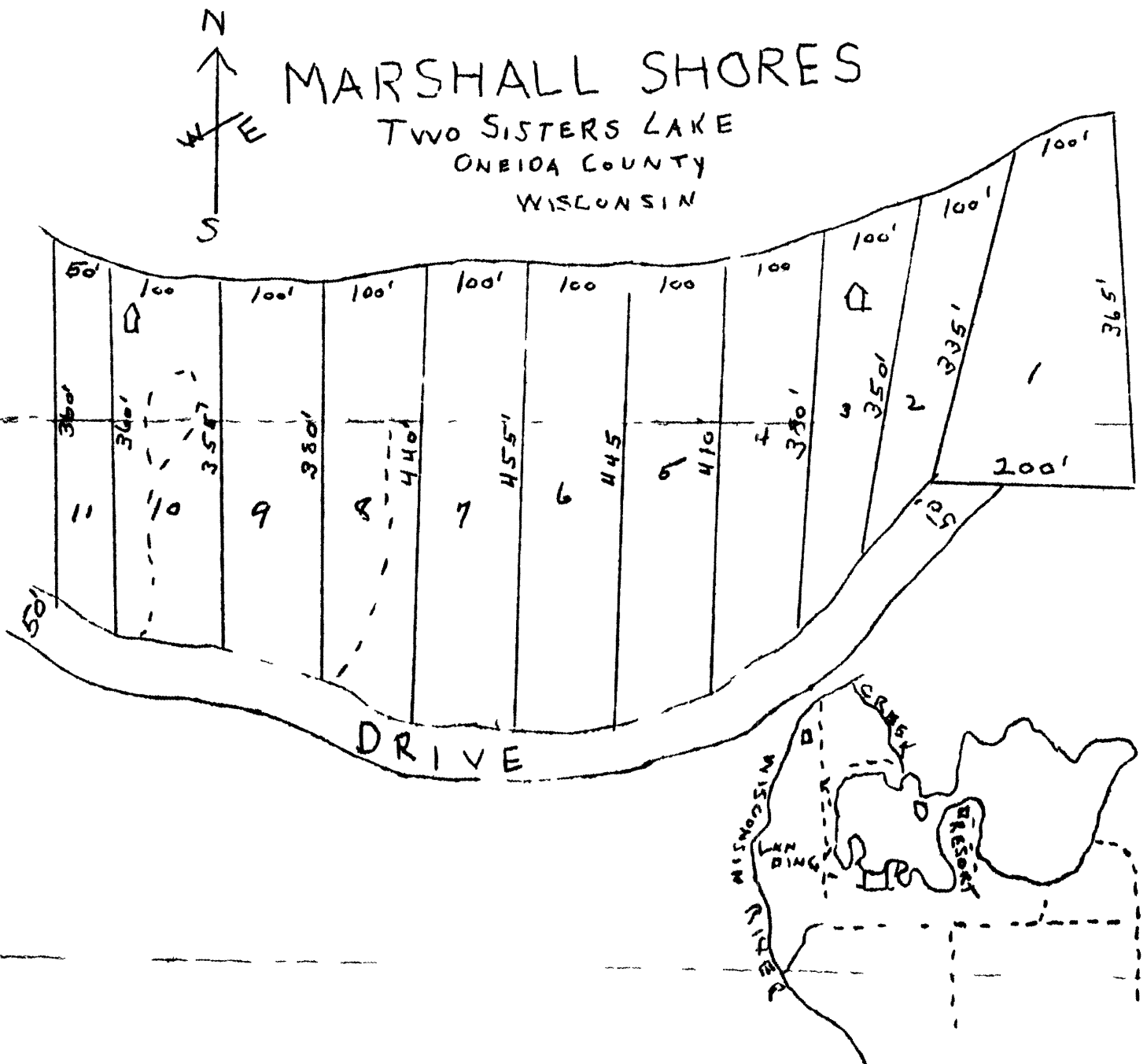
119673

Vol 148 Pg 338

RECEIVED & FILED #
 Oneida County Surveys, etc.
 Date DEC 22 1892
 By *[Signature]*
 Ops A 1

L1210

L. A. LEADBETTER
 Rhinelander, Wis
 Apr 16, 1945



Two Sisters Lake (Black Lake) is about two miles long East and West and from one-half to one mile in width, with a beautifully wooded peninsula jutting into it forming the narrows. Many other lakes near by. To the west of Marshall Shores there is a beautiful Hemlock Point of about six acres. The whole lake shore is well wooded with Pine and many kinds of hardwood. There is a fast running creek leading from the lake to the Wisconsin River. The lake contains Wall-eyed pike, Great Northern Pike, Black and Green Bass and several kinds of panfish. The water is clear and the beach is of whitest sand. The property is located about 15 miles north of Rhinelander, 5 miles from McNaughton on the C&NW Ry, southeast from the station of Lake Tomahawk also on the C&NW Ry. E. A. Wendt's Northern Lakes Resort is located on the peninsula between the lakes. The fact that this lake is easily accessible from State Road 47 but not on it, adds to its charm as a location for a private summer home.

L1210

L1210