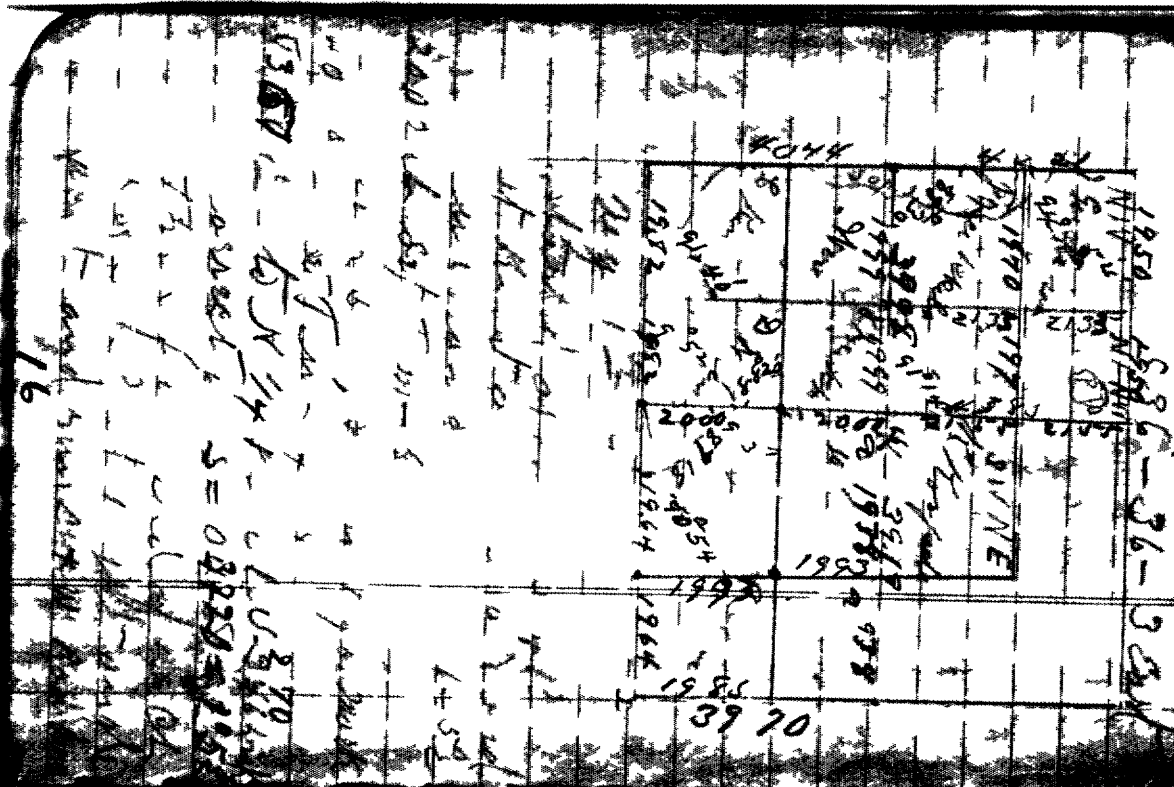




Aug 10<sup>th</sup> 1950  
 Aug 12<sup>th</sup> 1950



From Aug 12<sup>th</sup> 1950  
 150  
 200  
 350  
 200  
 150  
 100  
 50  
 100  
 150  
 200  
 250  
 300  
 350  
 400  
 450  
 500  
 550  
 600  
 650  
 700  
 750  
 800  
 850  
 900  
 950  
 1000

252  
8908

~~CROSS to 1/4 P. Hill NW 1/4  
containing for a well from  
at 575 yards end of road  
past~~

showing from 1/4 P South to  
SE corner

2970 also over  
The NES 1/4 in on NW 1/4  
at angle 19 1/2 deg - from the  
board line north SW 1/4

angle of So 1/4 E of overall  
to N 91.52  
angle from 2<sup>nd</sup> to N 87.08

then from W 1/4 P

18

(29)

1964  
1925

Aug 14<sup>th</sup> 1905  
Tetellawas at N 1/4 P

from edge of NES Random  
found same 270 in place  
of 376 yards

distance from end  
of Nonds Random road  
to E SW Random 48.8  
and at 1/4 P 117

distance from top of  
NES 1/4 down from center  
N 43 1/2 deg in place of 43.92  
from 1/4 P East center 89 feet 129 in  
correction for NES Random 50.22

= 1.52  
angle of South 1/4 P  
W 1/4 N 91.45  
shown from SW corner 2 dms  
So 1/4 P 99.65 W

distances from SW 1/4 P 2 dms  
corners 99.28  
Eg distance 1964 85.50

199