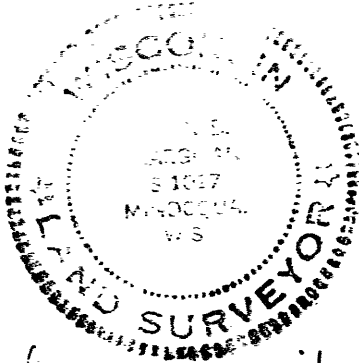


PART OF THE

SW 1/4 OF THE SW 1/4
SECTION 23 T 38 N, R 6 E
ONEIDA COUNTY, WISCONSIN

RECORDED & FILED # 12.3
Date FEB 11 1978
By MTH
DGS Area #



John B. Margitan 8/17/77
JOHN B. MARGITAN
LAND SURVEYOR S-1017

*5 Jan 78
D M W
13-23-38.6*

1" Ø x 24" IRON PIPE (1" Ø x 30" ALONG RIVER)

SCALE 1" = 100'
AUGUST 1972

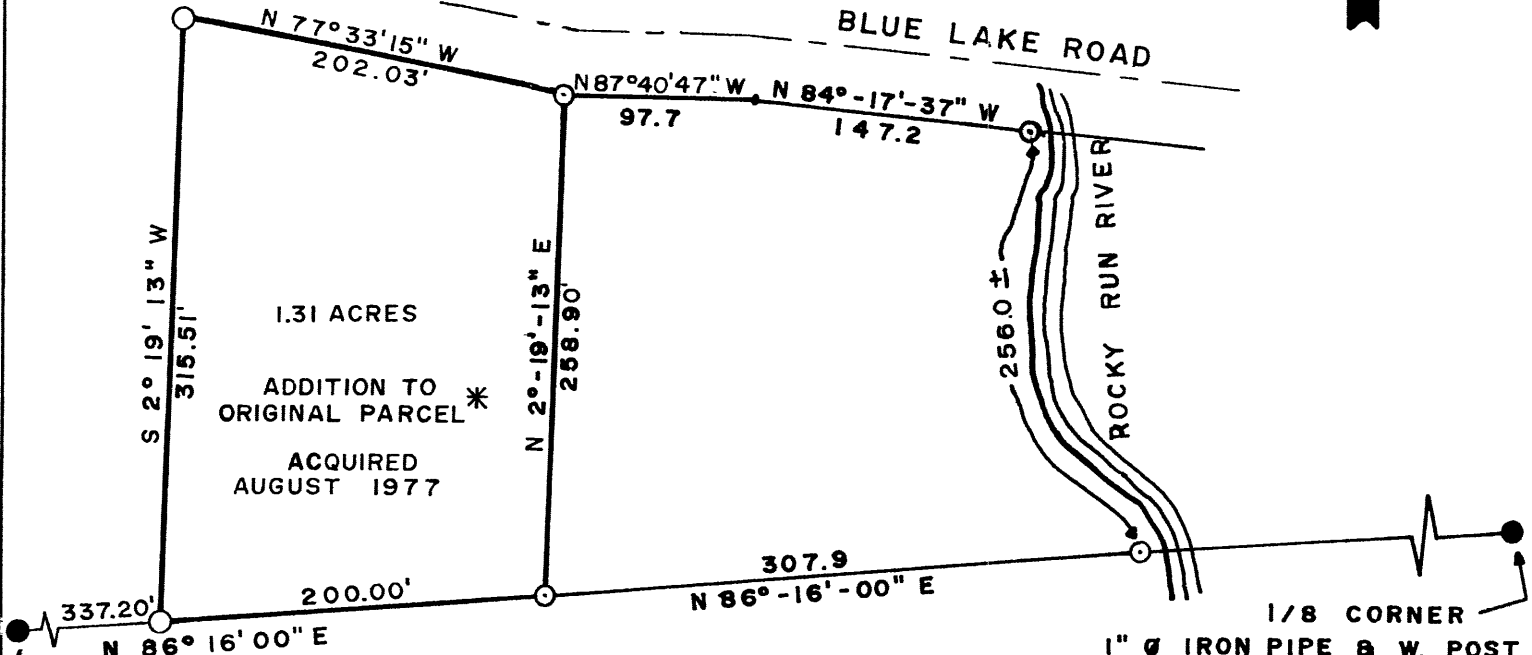
REVISED AUGUST 1977 (ADDITION TO ORIGINAL PARCEL)

* NOTE
ADDITION TO ORIGINAL PARCEL DOES NOT CONFORM TO H-65 FOR LAND SUITABILITY



CENTERLINE

BLUE LAKE ROAD



1.31 ACRES
ADDITION TO ORIGINAL PARCEL *
ACQUIRED AUGUST 1977

SOUTH WEST SECTION CORNER 2" Ø IRON PIPE & W. POST
WITNESSED BY
12" SPRUCE N 20° W, 73.0'
18" W. PINE N 26° W, 110.4'

1/8 CORNER
1" Ø IRON PIPE & W. POST
WITNESSED BY
12" N. PINE N 19° E, 44.4'
10" W. PINE N 24° W, 48.0'

9211

REVISED BY SET

DWG. NO. 23/77

RONALD F. EDWARDS & ASSOCIATES, LTD.

A. I. A.

ARCHITECTS ENGINEERS SURVEYORS LAND PLANNERS

ROUTE 2 BOX 100 WOODRUFF, WISCONSIN 54568 TELEPHONE AREA CODE 715 356-9416