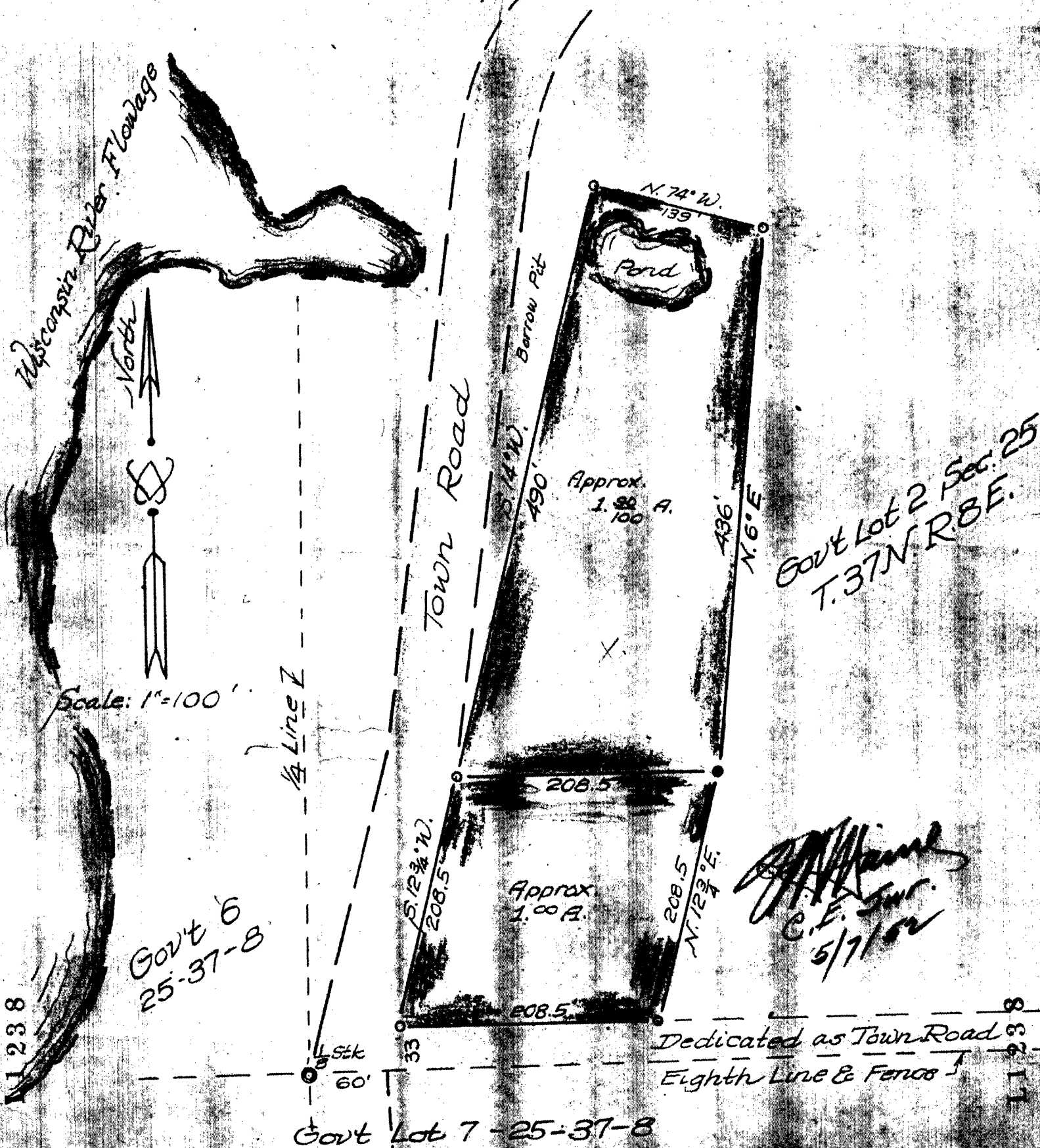


MAP # L1238
 DATE FILED SEP 09 1938
 BY *[Signature]*
 DESCRIPTION FILED
 ONEIDA CO. SURVEYOR'S OFFICE

L1238

Portion of Gov't Lot 2, Sec. 25
 Township 37 North of Range 8 East Oneida
 County, Wisconsin



L1238

L1238