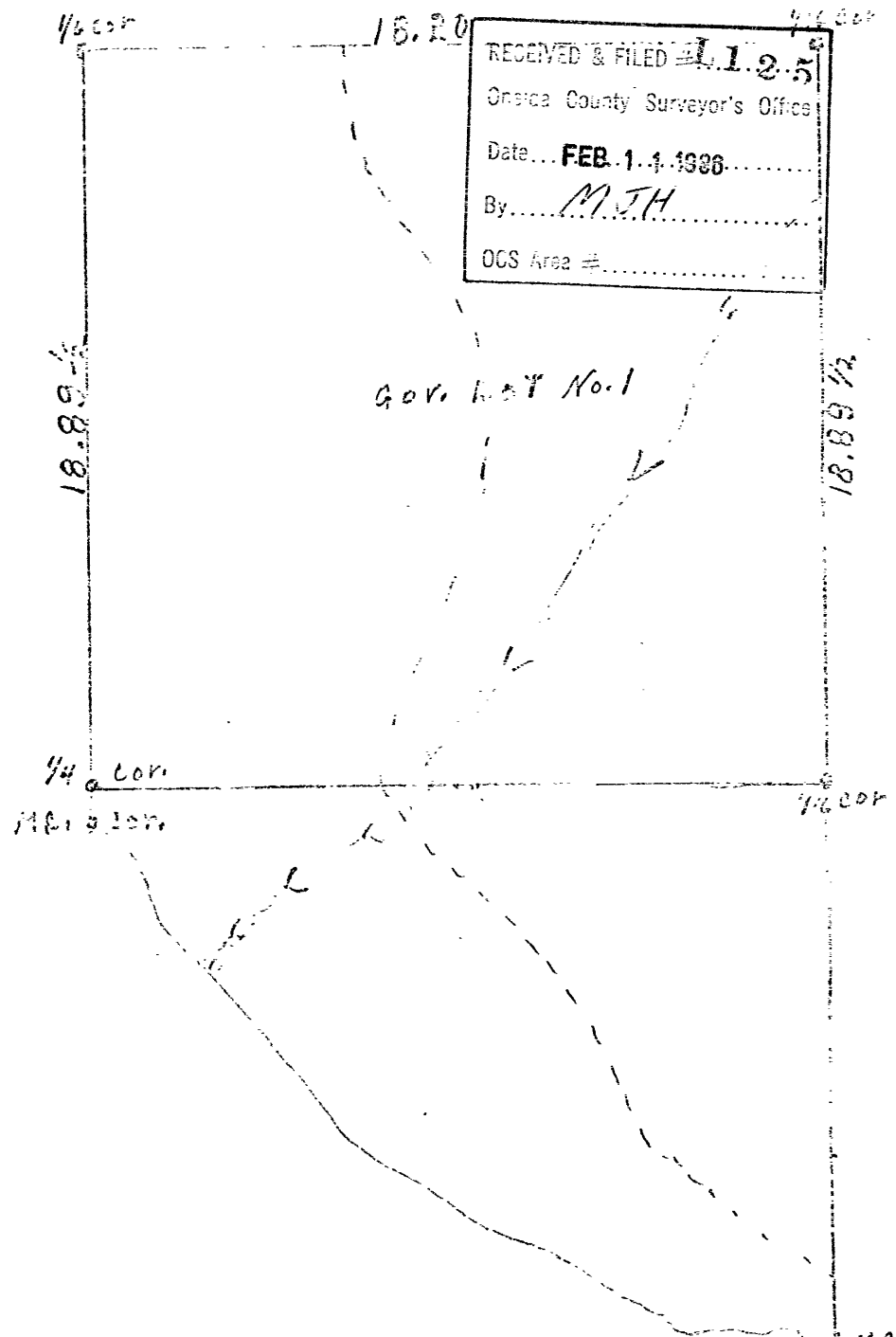


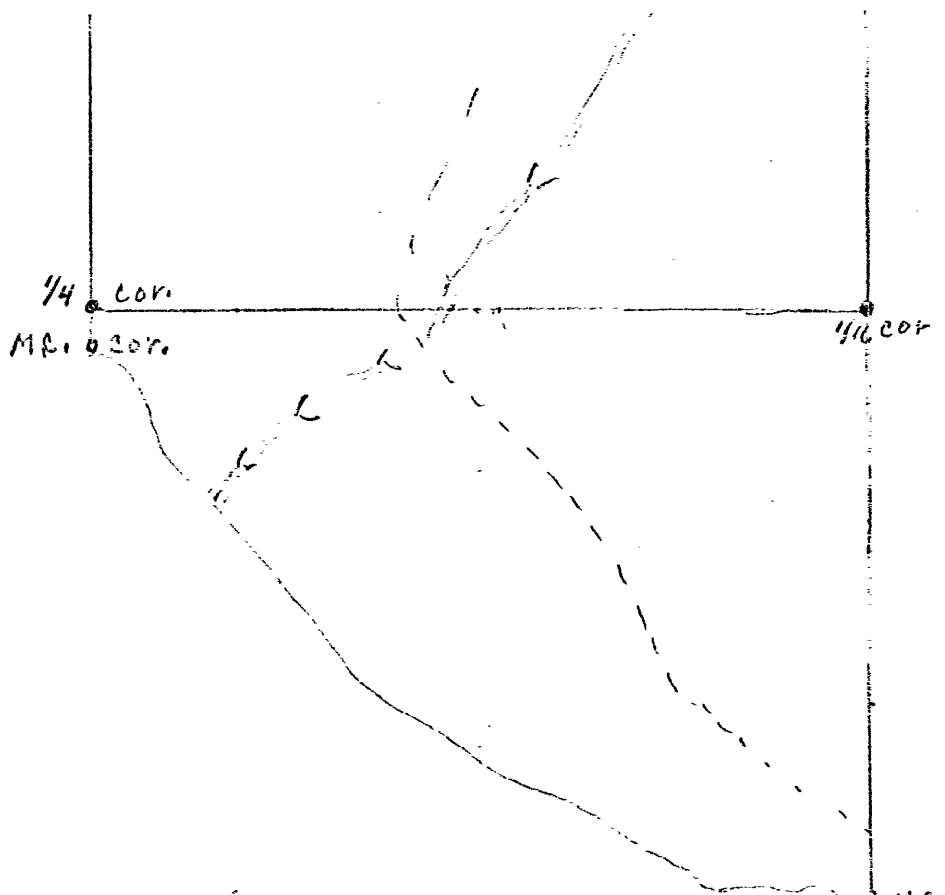
RECEIVED & FILED
 Onondaga County Surveyor's Office
 Date... 19 Dec 1977
 By... B. M. [Signature]
 OCS Area # 1899-1-3411

RECEIVED & FILED 1125
 Onondaga County Surveyor's Office
 Date... FEB. 14 1986
 By... M.J.H.
 OCS Area #



Notes of Gov Lot No. 1 Sec. 6 T. 32 N. R. 12 E. M.S.

- West side of Lot No. 1 Var. N. 2° E.
- 6.65' Center of Town Road distance from 1/4 Post North
- 18.89 1/2 Set 1/16 Post N. Pine 11" N. 67° E. 31 1/2 Links
- N. " 8 S. 34° W. 17 "
- East Random Var. N. 38° E.
- on North side of Gov Lot No. 1
- 11.71 Swamp
- 18.20 Swamp Set 1/16 Cor.
- Cedar stand 3 1/2" square 2 ft above soil
- N. Pine 7" S. 78° E. 65 1/2 Links
- South Random Var. 2° W.
- 9.08 Swamp
- 17.94 Creek 10 Links Wide
- 18.89 1/2 Set 1/16 Cor.
- Birch 8" S. 65° E. 34 Links
- Center of Town road
- To Iron Pike on Bank of Lake
- M.C. B.T. Birch 9" S. 35° E. 15 1/2 Links.
- 871 ft on East side of creek
- 672 " on West side of creek
- Creek entrance to Lake
- approx 60 ft



Notes of New Lot No. 1 Sec. 6 T. 32 N. R. 12 E. M.B.

West Side of Lot No. 1 Var. N. 20° E.
 6.65' Center of Town Road distance from 1/4 Post North
 18.89 1/2 Set 1/16 Post N. Pine 11" N. 67° E. 31 1/2 Links
 N. " 8 S. 34° W. 17 "

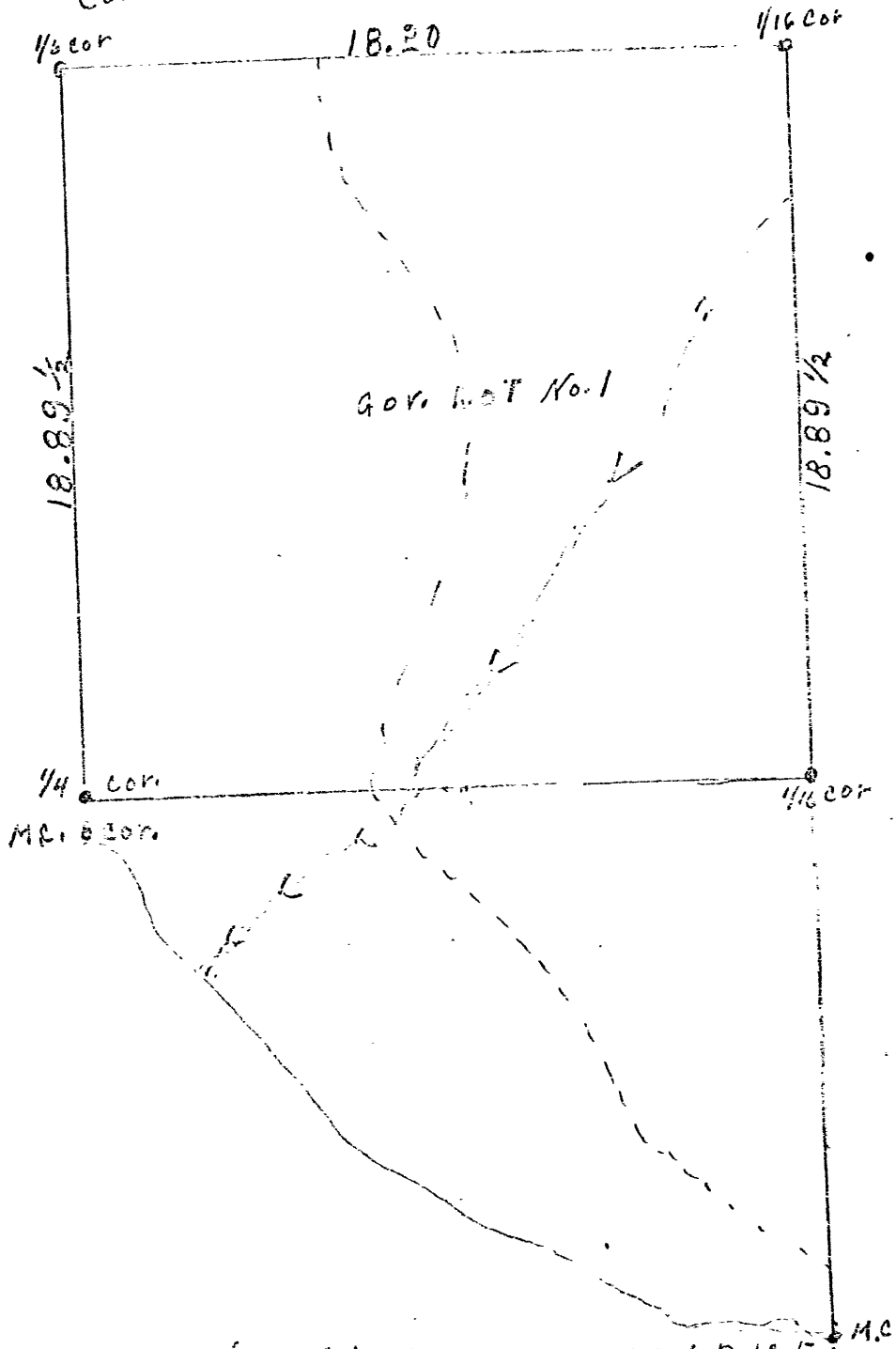
East Random Var. N. 88° E.
 on North side of Gov. Lot No. 1
 11.71 Swamp
 18.20 Swamp Set 1/16 cor.
 Cedar stake 3 1/2" square 2 ft above soil
 N. Pine 7" S. 78° E. 65 1/2 Links
 South Random Var. 2° W.
 9.08 Swamp
 17.94 Creek 10 Links Wide
 18.89 1/2 Set 1/16 cor.
 Birch 8" S. 65° E. 34 Links
 2.24 Center of Town road
 16.07 To Iron Lake on Bank of Lake
 M.B. B.T. Birch 9" S. 35° E. 15 1/2 Links
 871 ft on East side of creek
 672 " on West side of creek
 Creek entrance to Lake
 approx 60 feet

Surveyed by me about one year ago

J. L. Williams
 Forest, Co. Surveyor

1945²

Gov. Lot No. 1 Sec. 6 Town 39 N. R. 12 E.



Notes of Gov Lot No. 1 Sec. 6 T. 39 N. R. 12 E.

West Side of Gov Lot No. 1 Var. N. 20° E.

6.65 Center of Town Road distance from 1/4 Post North
 18.89 1/2 Set 1/16 Post N. Pine 11" N. 67° E. 31 1/2 Links
 N. " 8 S. 34° W. 17 "

East Random Var. N. 88° E.
 on North side of Gov Lot No. 1

11.71
 18.20

Swamp Set 1/16 cor.

Cedar stand 3 1/2" square 2 ft above soil
 N. Pine 7" S. 78° E. 65 1/2 Links
 South Random Var. 2° W.

9.00
 17.94
 18.89 1/2

Swamp
 Creek 10 Links Wide

Set 1/16 cor.

Brick 8" S. 65° E. 34 Links

Center of Town road

To Iron Pipe on Back of Lake

M.S. B.T. Brick 9" S. 35° E. 15 1/2 Links

87 ft on East side of creek

L1 25 2.24
 16.07

7/30/1945.

Gov. Lot 1 in Sec. 6-39-12

West side of Gov. Lot No. 1 Var. N. 2 E.
6.65 Center of Gov. Road

Distance from M.C. cor to $\frac{1}{4}$ post 1.00 links
" from $\frac{1}{4}$ post 18.89 $\frac{1}{2}$ to $\frac{1}{16}$ corner Set Cor.
Nor. Pine 11 N. 67 E. 31 $\frac{1}{2}$ links
" " 8 S 34 W. 17 links
East Random Var. N 88 E.

11.71 Swamp
18.20 " Set $\frac{1}{16}$ cor N. Pine 7. S.78 E. 65 $\frac{1}{2}$ Links
South Random
9.00 over Swamp
17.94 creek 10 links wide running S. W.
18.89 $\frac{1}{2}$ Set $\frac{1}{16}$ corner Iron Pipe

Birch 8 S. 65 E. 34 links
Con. South same Var. to Lake
2.24 Center of Gov. Road
16.07 to Lake Set Iron Pipe
Birch 9. S. 35 E. 13.5 links

Lake Frontage.

From corner West to Creek 871 feet
and from M. C. Corner East to Creek 272 feet
Creek 60 feet across
and there is 200 feet of Swamp with creek
to low for lots

Total frontage with creek 1603 feet.

Land the upper $\frac{1}{2}$ 40 has 34 $\frac{1}{2}$ Acres
the lower parcel 23 Acres
Total 57 $\frac{1}{2}$ Acres.

7/30/1945.

Gov. Lot 1 in Sec. 6-39-12

West side of Gov. Lot No. 1 Var. N. 2 E.
6.65 Center of Gov. Road

Distance from M.C. cor to $\frac{1}{4}$ post 1.00 links
" from $\frac{1}{4}$ post 18.89 $\frac{1}{2}$ to 1/16 corner Se
Nor. Pine 11 N. 67 E. 31 $\frac{1}{2}$ links
" " 8 S 34 W. 17 links
East Random Var. N 88 E.

11.71 Swamp
18.20 " Set 1/16 cor N. Pine 7. S.78 E. 63
South Random
9.00 over Swamp
17.94 creek 10 links wide running S. W.
18.89 $\frac{1}{2}$ Set 1/16 corner Iron Pipe

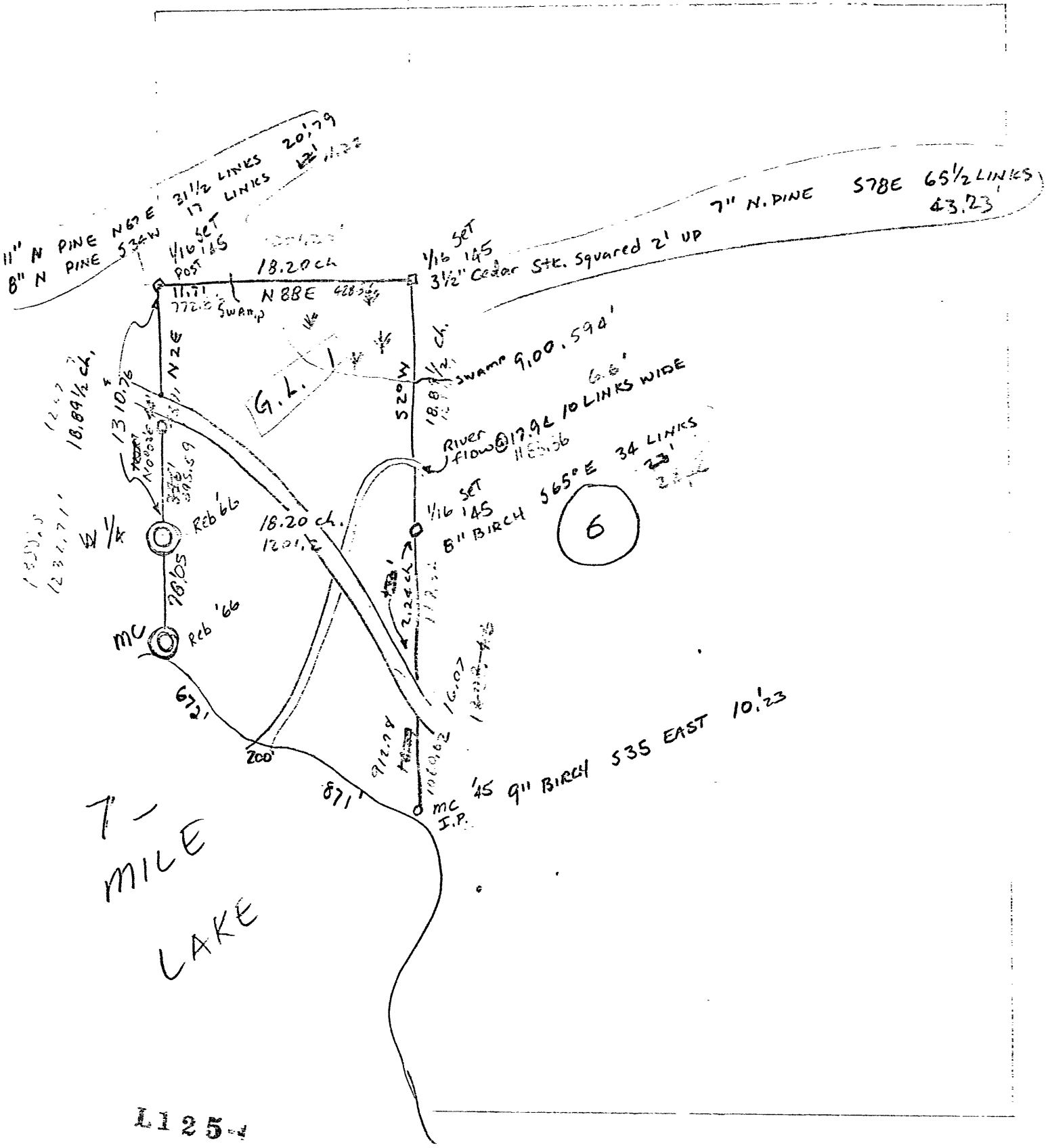
Birch 8 S. 65 E. 34 links
Con. South same Var. to Lake
2.24 Center of Gov. Road
16.07 to Lake Set Iron Pipe
Birch 9. S. 35 E. 15.5 links

Lake Frontage.

From corner West to Creek 871 feet
and from M. C. Corner East to Creek 672 feet
Creek 60 feet across
and there is 200 feet of Swamp with creek
to low for lots

Total frontage with creek 1603 feet.

Land the upper \approx 40 has 34 $\frac{1}{2}$ Acres
the lower parcel 23 Acres
Total 57 $\frac{1}{2}$ Acres.



L125

RESURVEY NOTES 1945 by John F. Hammes

1/8 CORNER POST '45
11" N. PINE N7E 20.6'
6" N. PINE S74W 11.2'

5/8" CEDAR STR. 2' UP
7" N. PINE S70E 43.2'

DATA BASED
ON WEST LINE
AS NOTED
REB 1966

GOV. LOT 6
SEC. 1
T39N R12E

30 1/2 AC.

1" I.P. '26
REB '26

1 1/4 AC.
MC
REB '66

EXCEPTION

23 AC.

7-MILE LAKE

1/8 CORNER POST '45
6" BIRCH S65E 22.4'

MC 1" I.P. '45
7" BIRCH S35E 10.2'

L120

L125