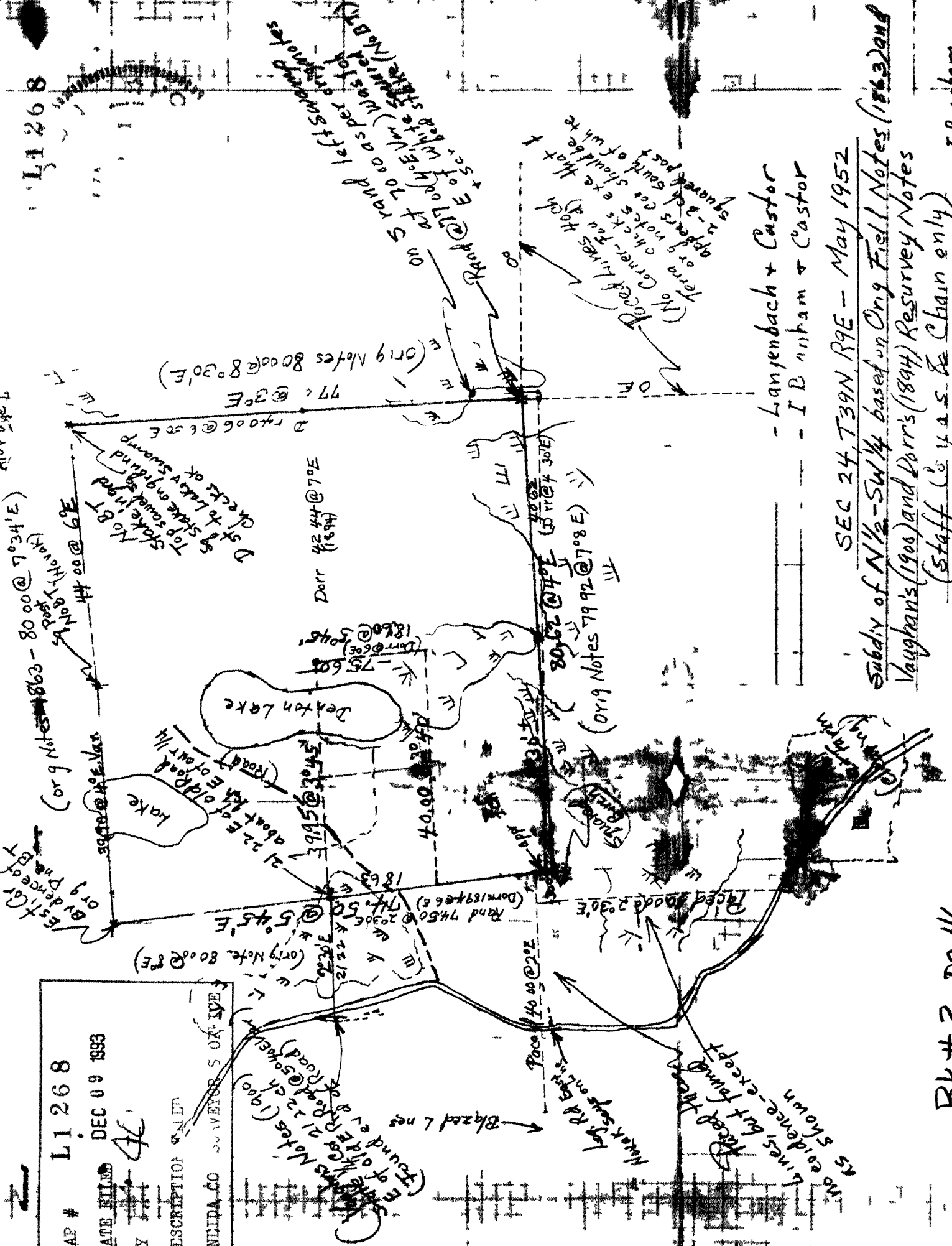


MAP #	LI 268
DATE FILED	DEC 09 1993
BY	AC
DESCRIPTION	UNIVERSITY
ONIDA CO	UNIVERSITY



SEC 24, T39N, R9E - May 1952

Subdiv of N 1/2 - SW 1/4 based on Orig Field Notes (1863) and
Vaughan's (1900) and Dorr's (1894) Resurvey Notes
(Staff to use as Chain only)

- Lanjendach + Castor
- I Bringham + Castor

Bk # 2 Pg 46

Blazed Lines
No evidence - except
lines shown

(No Corner for High
Face Lines Hog
Term or notes at should be
appears south of white
square post)

(Orig Notes 8000 @ 8° 30' E)
77.0 @ 3° E

Dorr 42.44 @ 70.1

8062 @ 71° E (Orig Notes 7992 @ 7° 8' E)

(Orig Notes 8663 - 8000 @ 7° 34' E)
44.00 @ 69° E
D st to Lake + Swamp
Stake on ground
Top square
No BT

Blazed Line
No evidence

(Orig Note 8000 @ 8° E)
21.22 @ 2° E
21.22 @ 2° E

2096 @ 2° 30' E
74.50 @ 5° 45' E
1863 (Dorr 1894 @ 6° E)

40.00 @ 30° E
1860 @ 30° E
1860 @ 30° E

21.22 @ 2° E
39.45 @ 30° E

2140.66 @ 6° 55' E

2140.66 @ 6° 55' E

2140.66 @ 6° 55' E

2140.66 @ 6° 55' E

2140.66 @ 6° 55' E

2140.66 @ 6° 55' E

2140.66 @ 6° 55' E

2140.66 @ 6° 55' E

2140.66 @ 6° 55' E