

MAP # **LI 286**
 DATE FILED **DEC 10 1953**
 DESCRIPTION **70**
 ONEIDA CO SURVEYOR'S OFFICE

370 = 2038' (True - 2°27'E ±)
 Random @ 15°E ± 20.50

DATA
 SEC 32-40-4E
 Feb. 1953
 F. J. Johnson
 (Approx. Survey only)
 BK # 3 15 68

LI 286

LI 286

40.00 @ 20E ±

Net Obs. Area

39.84

checks 40.00 ± @ 1.3°E (OK)
 (No tram out)

45 SK
 (Meas 40.96 to E. corner)

3990
 (rand 3 1/4 E corner 0.06 N)
 True 3010'E ± ?

20.02
 1/2 2 1/2 E ±

20.58
 79.99 ±
 2°E
 Rand

20.45E ±
 82.20

40.00 ±
 Meas 40.96 to E. corner

20.81
 1/2 2 1/2 E ±

Comp - 42.75 ± at approx
 1/2 1/2 E ±

40.63
 1/2 2 1/2 E ±

LI 286

Pop 114

1/2 1/2 E ±

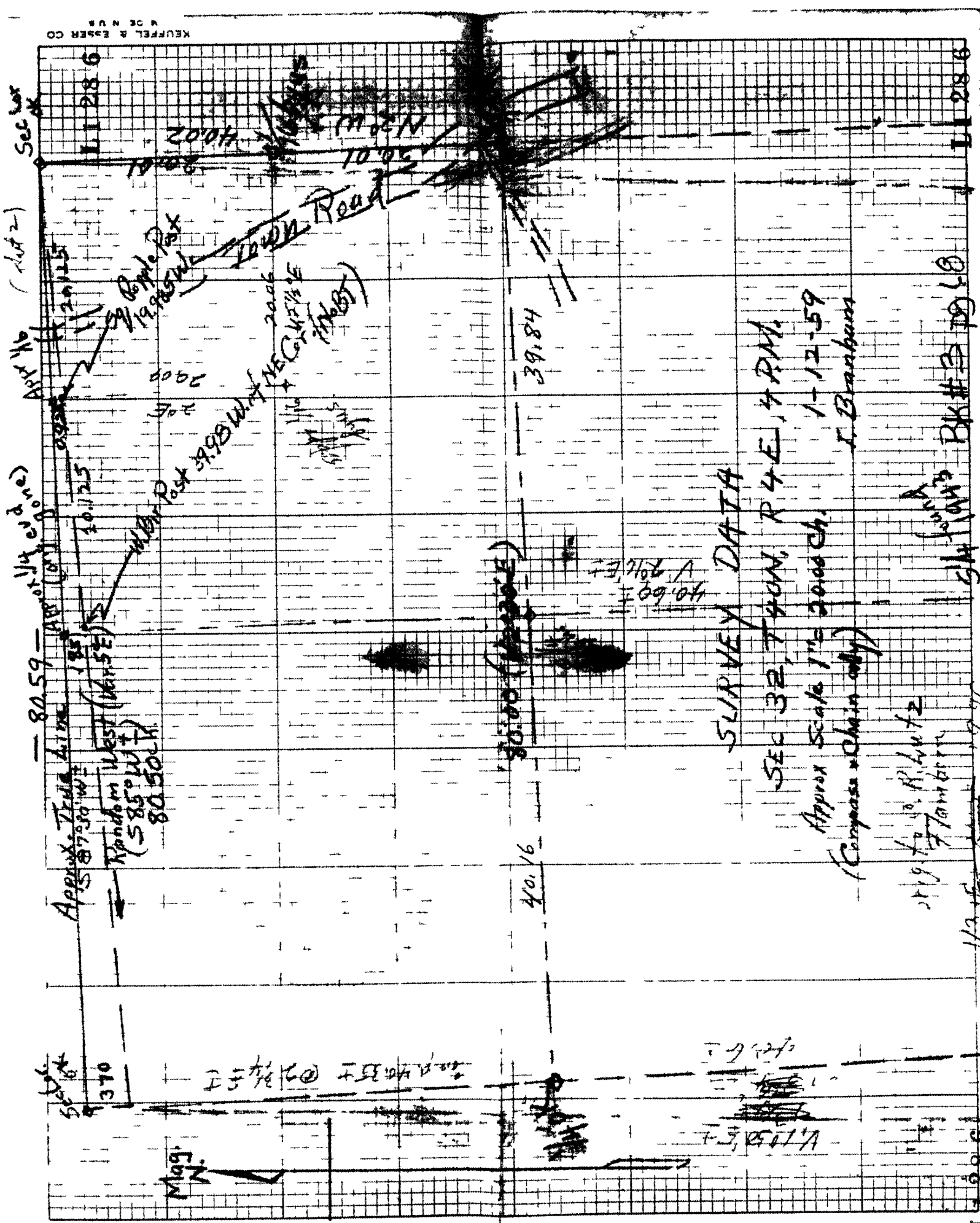
Appr 1/16 by W.S.

44 46 5

53 10

18 x 40

Sec 32



SURVEY DATA

SEC 32, T40N, R4E, 4PM.
 Approx Scale 1" = 2000 Ch.
 1-12-59
 J. Branham

J. Branham
 J. Branham

BK # 3
 1960