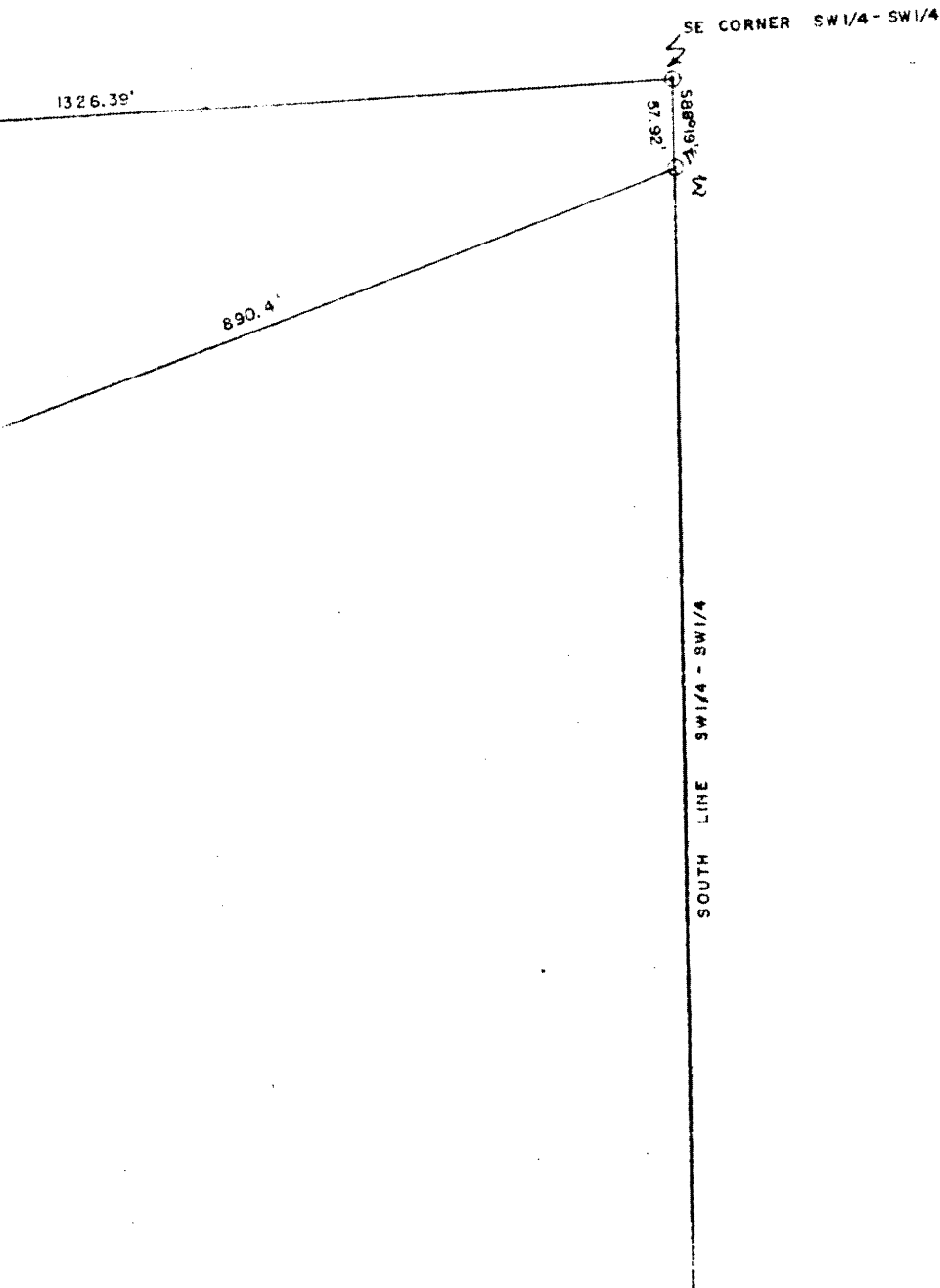


RECEIVED & FILED # **L131**  
 Oneida County Surveyor's Office  
 Date **FEB 11 1988**  
 By **M J H**  
 OCS Area #.....

~~RECEIVED & FILED # **L131**  
 Oneida County Surveyor's Office  
 Date **13 APR 77**  
 By **D.M. W. JAMES**  
 OCS Area # **13-4-3711**~~



1817

	SURVEY FOR	
	MICHAEL T. GAFFNEY	
	2401 W. WISCONSIN AVE, MILWAUKEE	
SCALE 1" = 100'		DATE 4 JULY 1973 OWN. BY K
DWG. NO.	GENISOT AND ASSOCIATES, INC.	
4986	RHINELANDER, WIS.	

028

NE CORNER SW1/4 - SW1/4

S 3° 07' E

EAST LINE SW1/4

N 20° 34' W  
23.60'

N 40° 02' E

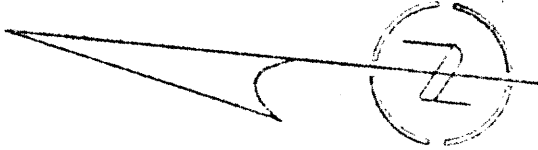
MARGARET

429.61'

N 11° 45' E 140.26'

LAKE

ROAD



PART OF

SEC. 4, T37

L131

S 3° 07' E

1326.39'

EAST LINE SW 1/4 - SW 1/4

SE CORNER

57.92'

S 88° 19' E 1/4

890.4'

N 20° 26' W

N 11° 45' E 140.26'

LAKE

ROAD

SOUTH LINE SW 1/4 - SW 1/4

PART OF SW 1/4 - SW 1/4

SEC. 4, T37N, R11E EAST,

L131

