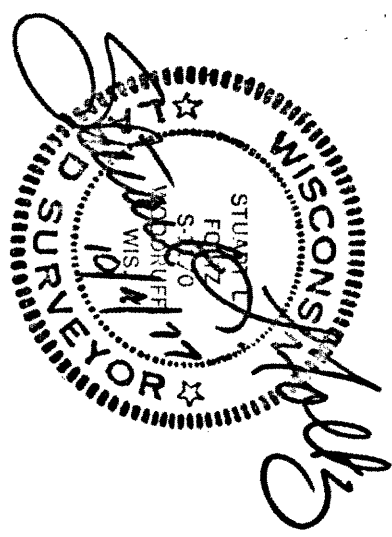


RECEIVED BY FILED ~~2018~~  
 (Oneida County) Office  
 a/c 13 Dec 77  
 BY D.M. Williams  
 11/14-98-3808

RECEIVED & FILED #. L13.2  
 Oneida County Surveyor's Office  
 Date FEB 11 1988  
 By MJH  
 OCS Area #



Fisher, Imman, Foltz & Associates Inc.  
 Minocqua, Wisconsin

# ROLLING ACRES

The County plat of

Part of the

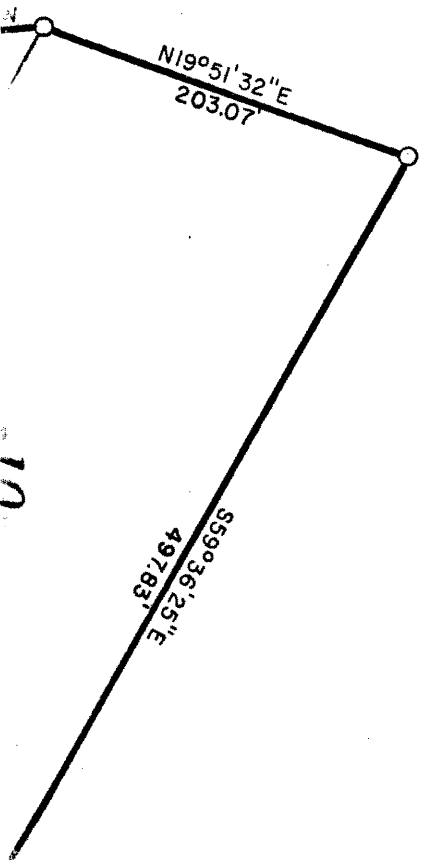
SE 1/4 of the SW 1/4

and part of the

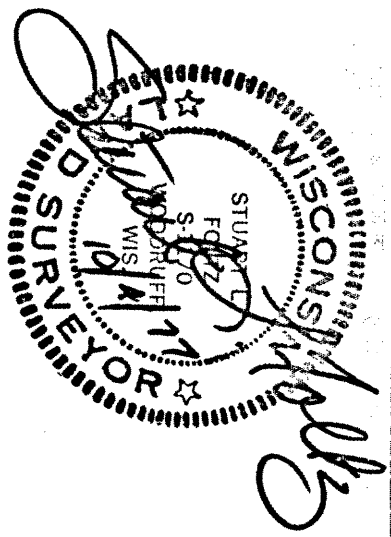
NE 1/4 of the SW 1/4

SECTION 28, T38N, R6E

Hazelhurst Township  
 Oneida County, Wisconsin

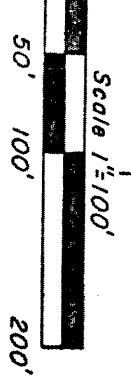


L1321



Fisher, Imman, Foltz & Associates Inc.  
Minocqua, Wisconsin

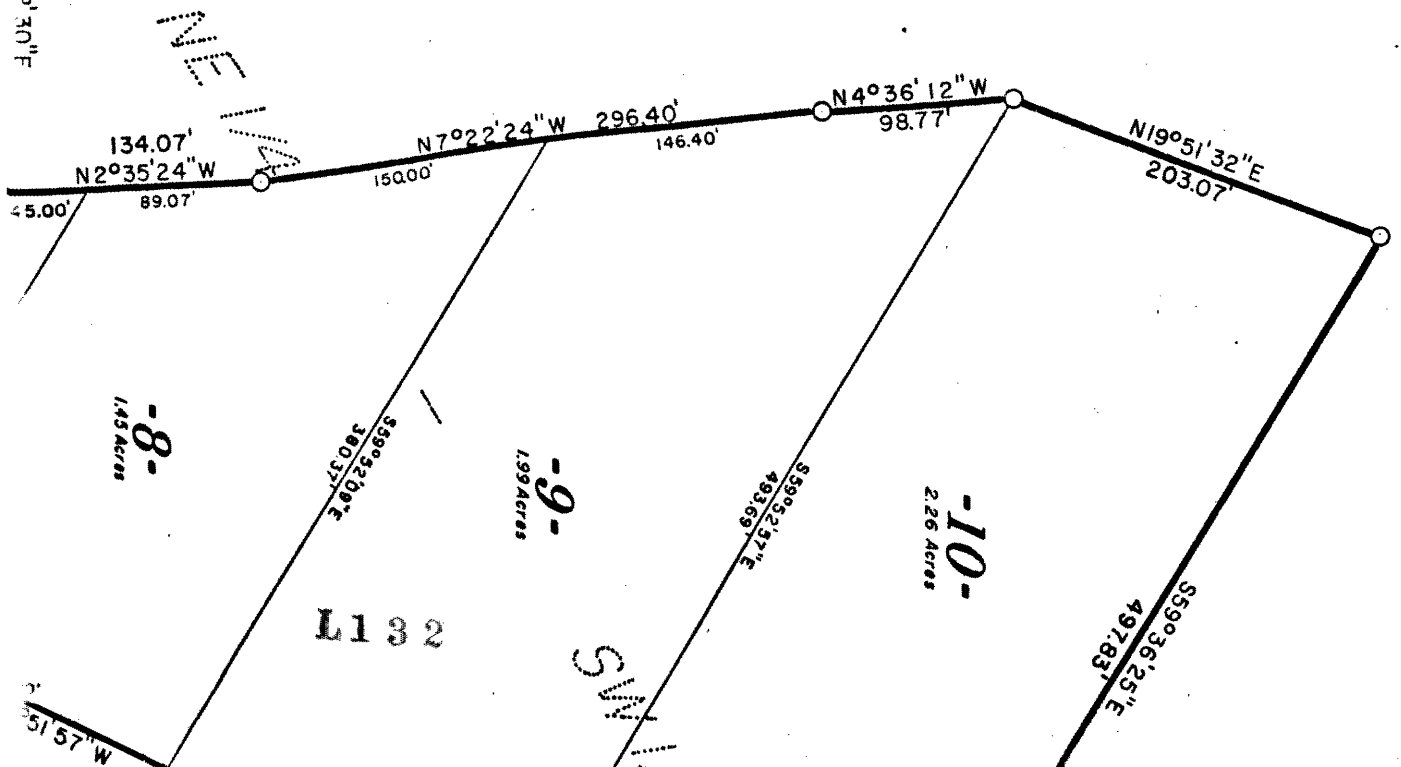
Bearings Solar

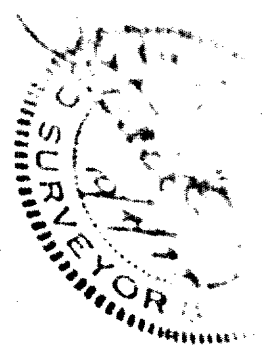


1/4" X 30" Round Iron rod set  
weighing 4.17 pounds per  
linear foot

Curve Data Table

Curve No.	Lot No.	Radius	Delta	Chord	Chord Bearing	Arc
1-2		980.83'	23°48'17"	404.58'	N38°36'12.5"E	407.51'
	4	"	4°57'07"	84.74'	N29°10'37.5"E	84.77'
	5	"	11°39'01"	199.09'	N37°28'41.5"E	199.44'
	6	"	7°12'09"	123.22'	N46°54'16.5"E	123.30'
3-4		1463.40'	3°49'39"	97.74'	N48°35'31.5"E	97.76'
	6	"	0°41'44"	17.77'	N50°09'29"E	17.77'
	7	"	3°07'55"	79.98'	N48°14'39.5"E	79.99'
5-6		355.69'	23°48'45"	158.89'	N33°46'19.5"E	160.24'

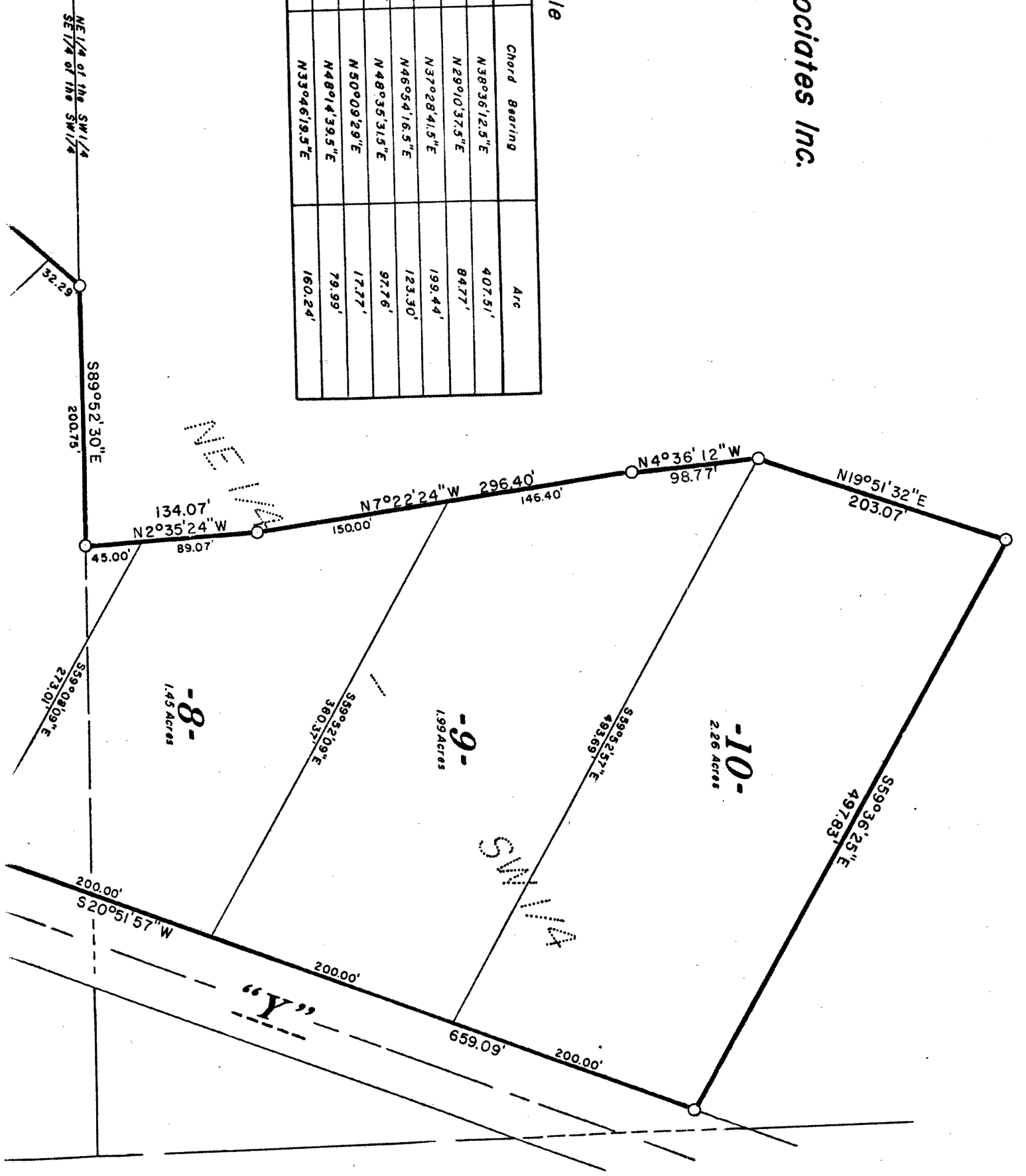




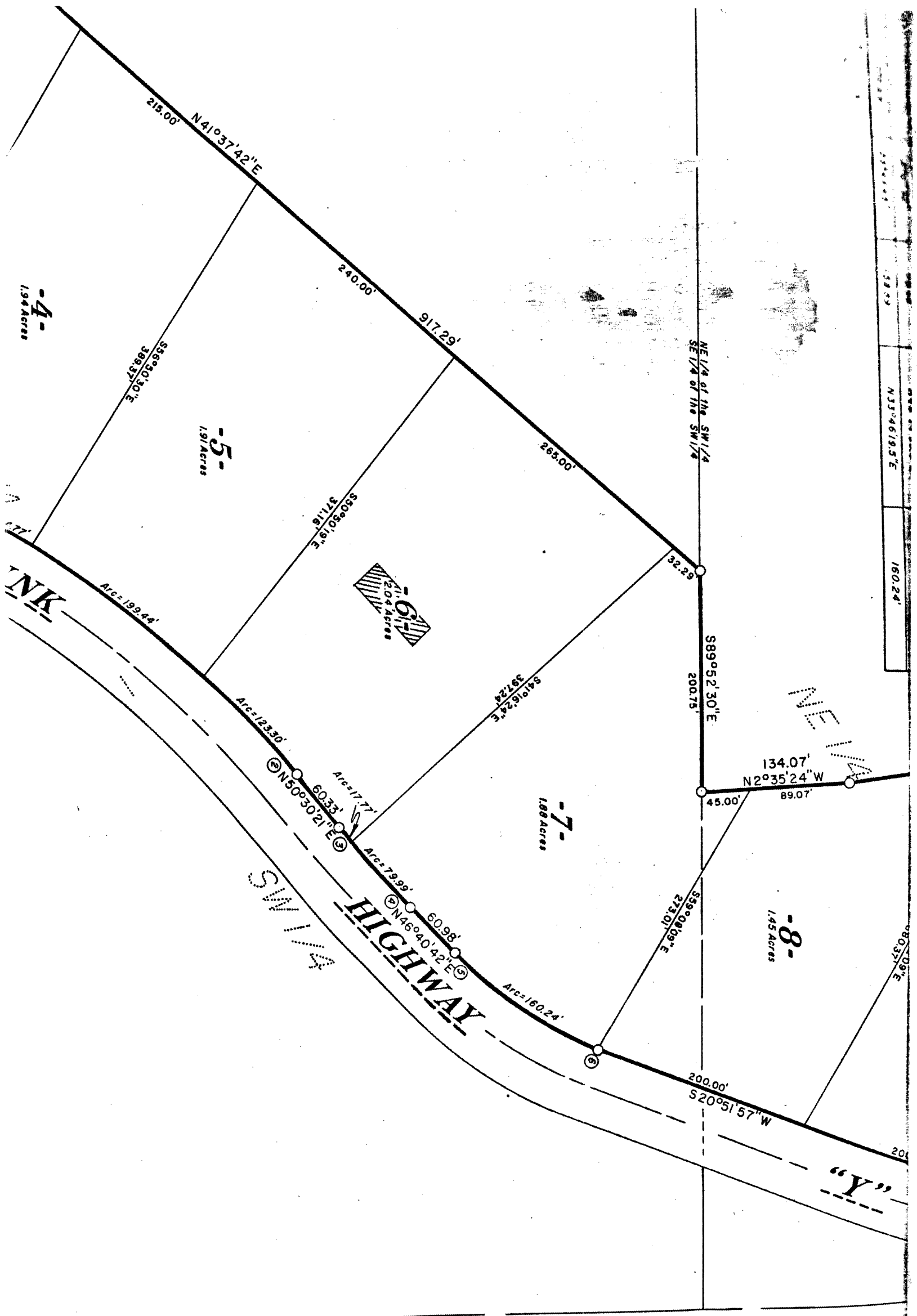
James H. Foltz & Associates Inc.  
 Surveyors  
 Wisconsin

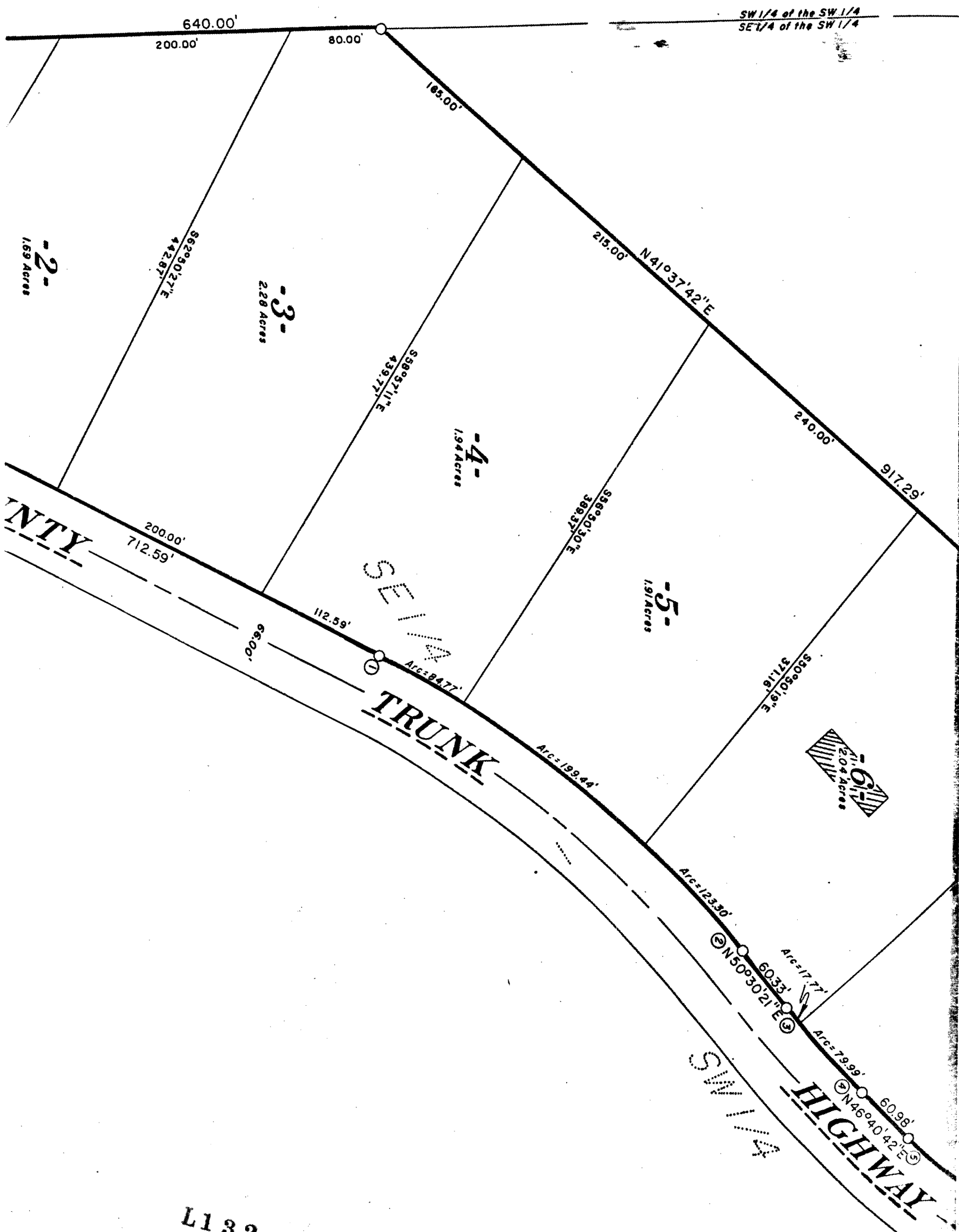
Curve Data Table

Delta	Chord	Chord Bearing	Arc
23°48'17"	404.58'	N38°36'12.5"E	407.51'
4°57'07"	84.74'	N29°10'37.5"E	84.77'
11°39'01"	199.09'	N37°28'41.5"E	199.44'
7°12'09"	123.22'	N46°54'16.5"E	123.30'
3°49'39"	97.24'	N48°35'31.5"E	97.76'
0°41'44"	17.77'	N50°09'29"E	17.77'
3°07'55"	79.98'	N48°14'39.5"E	79.99'
23°48'45"	158.89'	N33°46'19.5"E	160.24'





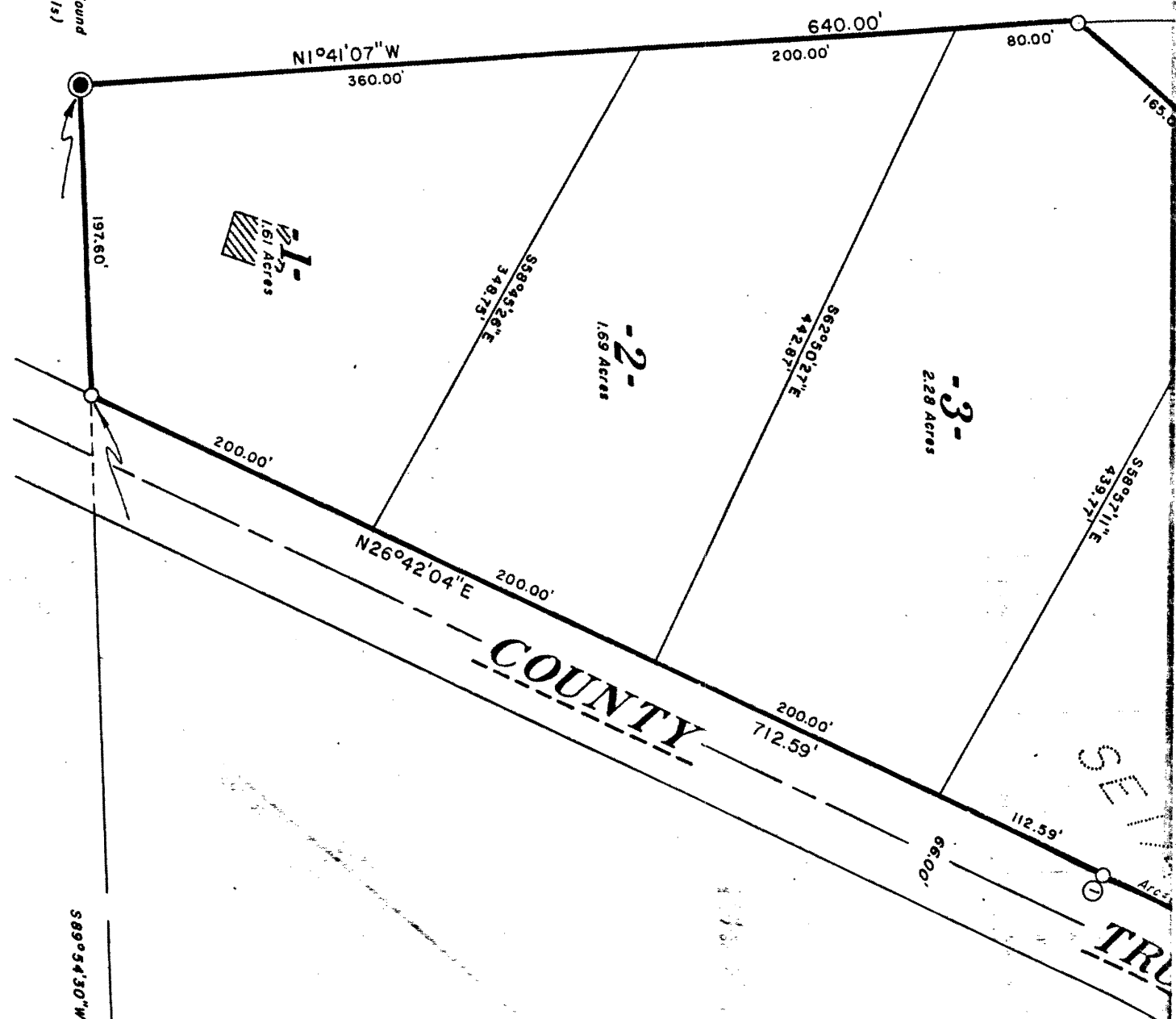




L132

145 100

1/8 Corner 11/4 Iron pipe found  
5" Cedar post (Owens Illinois)  
8" J. Pine S80°W, 21.2'  
6" J. Pine N58°E, 14.6'



L132