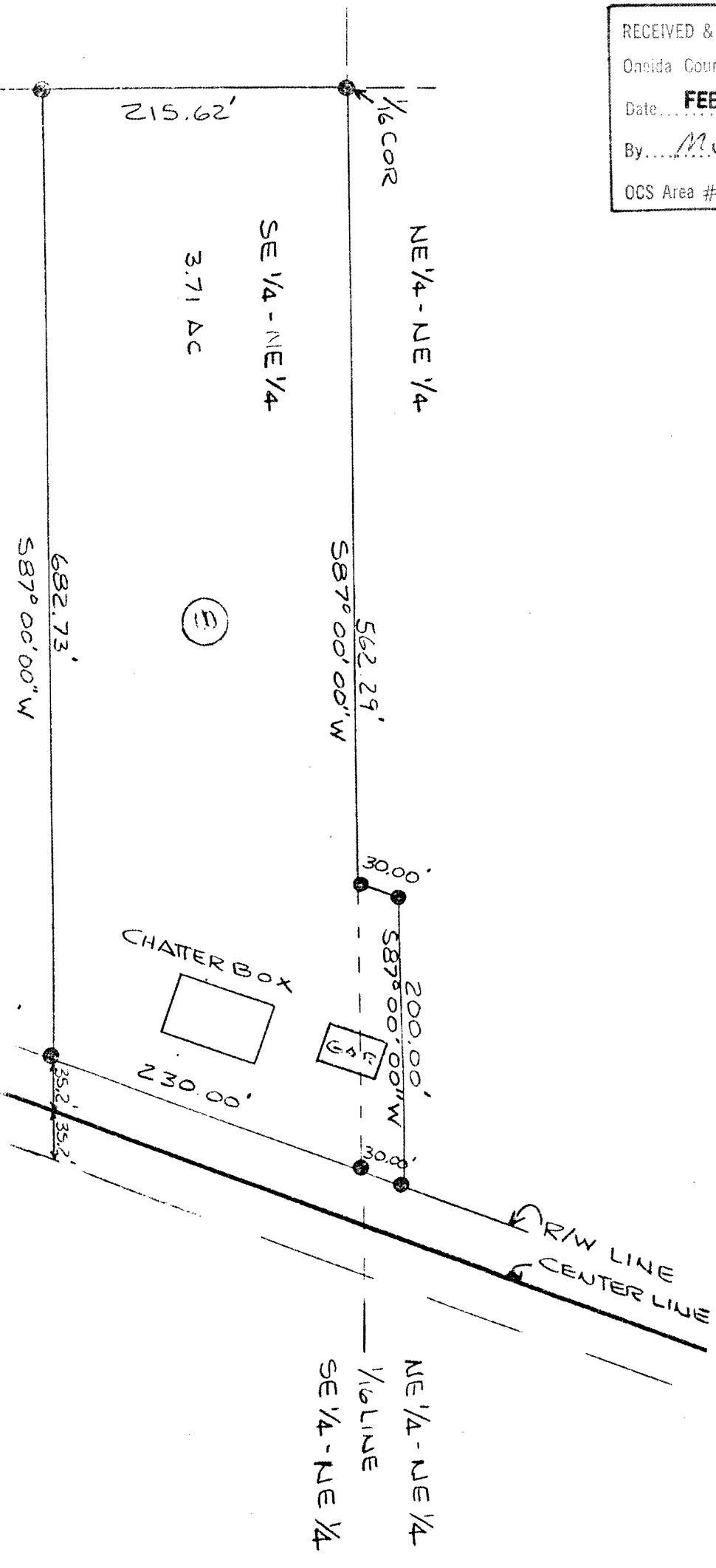


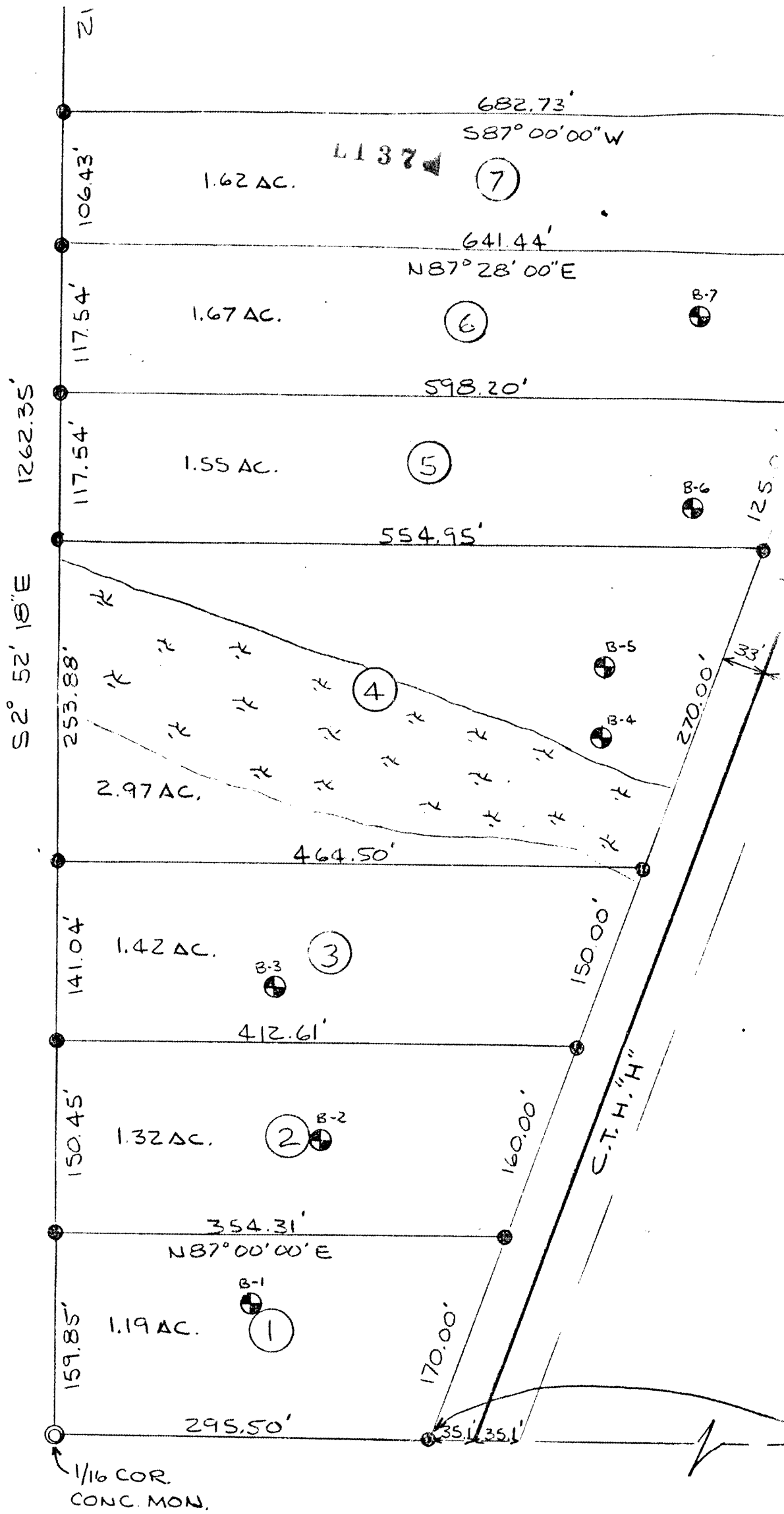
RECEIVED & FILED # **L137**
 Oneida County Surveyor's Office
 Date **FEB. 1 1 1986**
 By **MJH**
 OCS Area #.....

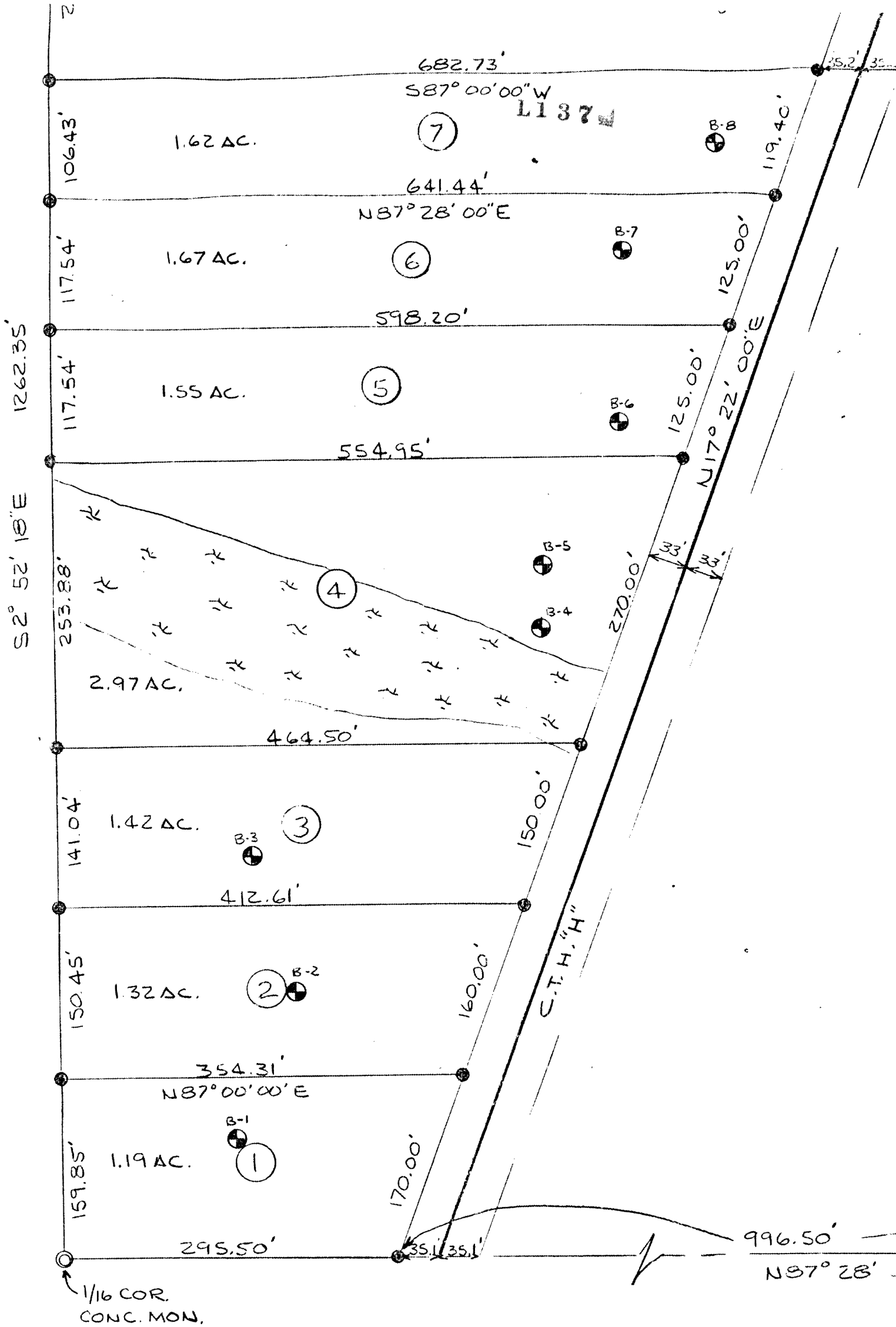
COUNTY PLAT OF
LAND WEST
 LOCATED IN THE NE 1/4, SEC. 1, T39N, R9E
 TOWN OF SUGAR CAMP
 ONEIDA COUNTY



RECEIVED & FILED # **L2036**
 Oneida County Surveyor's Office
 Date **9 Nov 77**
 By **D. M. Winot**
 OCS Area # **1-1-39.9**

L137

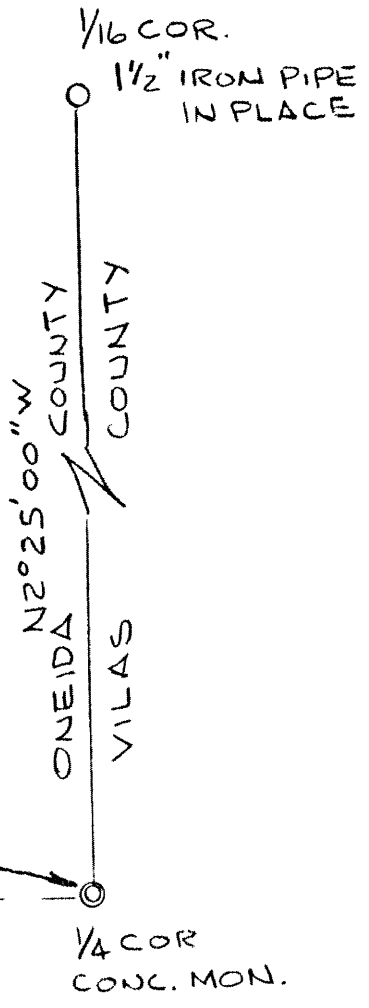




35.2

L137
L137

N



LEGEND

- - 1"X30" IRON PIPE
 - ⊙ - CONCRETE MONUMENT
 - ⊕ - SOIL BORING
 - ≡ - SWAMP
- ALL SLOPES LESS THAN 15%

SCALE: 1"=100'

OWNER - EMMERY MARR

SURVEY BY A.M. HESS S-666
MAY 1975

