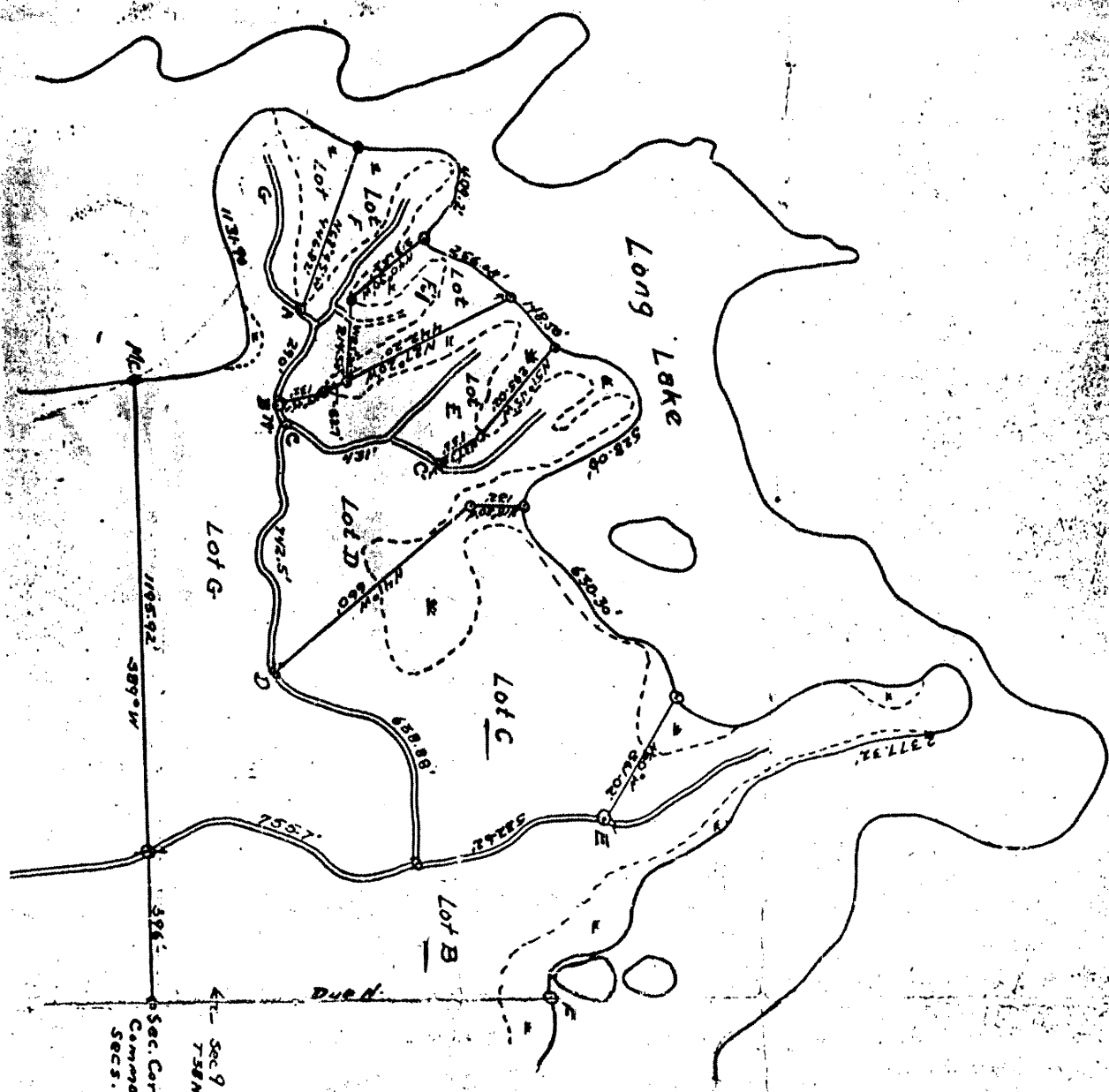


MAP # **L1397**
 DATE FILED **JUL 14 1995**
 BY *JB*
 DESCRIPTION FILED
 ONEIDA CO. SURVEYOR'S OFFICE



* SW CORNER OF SHEET
 390.301 450.451

Robert P. Radomski
 5716 Bartonwood Pl., N.E.
 Albuquerque, NM 87111

1805-299-7233 Plat of Surveyed Lots
 Long Lake, Oneida County, Wis.

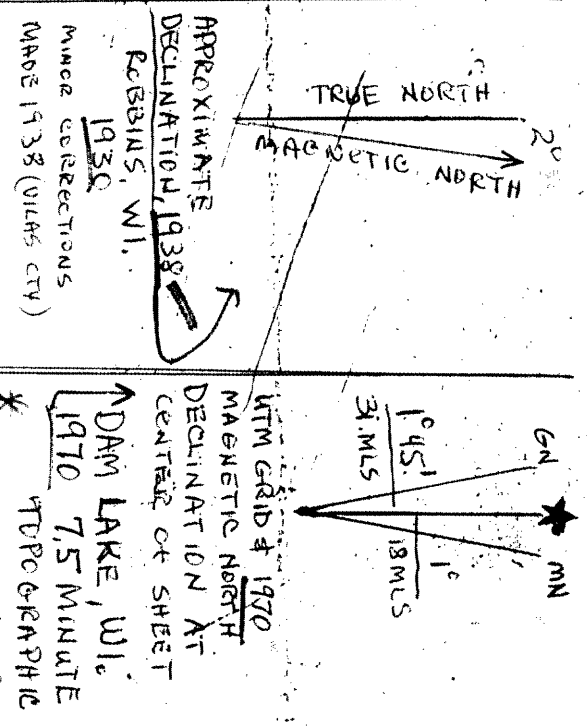
YEAR 2

Decl. 2 1/2° E 66' = 1 CHAIN (66')

Lot corner ties

- Point A = 637.64 N + 26.98 CH W of Sec. Cr.
- B = 4.57 CH N + 23.40 CH W " " "
- C = 4.95 CH N + 22.27 CH W " " "
- D = 4.60 CH N + 12.40 CH W " " "
- E = 16.84 CH N + 6.83 CH W " " "
- F = 14.89 CH N of Section Corner

- A = 354.42 N 1,780.68 W
- B = 301.62 N 1,544.4 W
- C = 326.70 N 1,469.82 W
- D = 303.60 N 818.40 W
- E = 1111.44 N 450.78 W
- F = 982.74 N of Sec. CORNER



APPROXIMATE
 DECLINATION 1938
 ROBINS, WI.
 1938
 MINOR CORRECTIONS
 MADE 1938 (VILAS CTY)

UTM GRID # 1970
 MAGNETIC NORTH
 DECLINATION AT
 CENTER OF SHEET
 DAM LAKE, WI.
 1970 7.5 MINUTE
 TOPOGRAPHIC

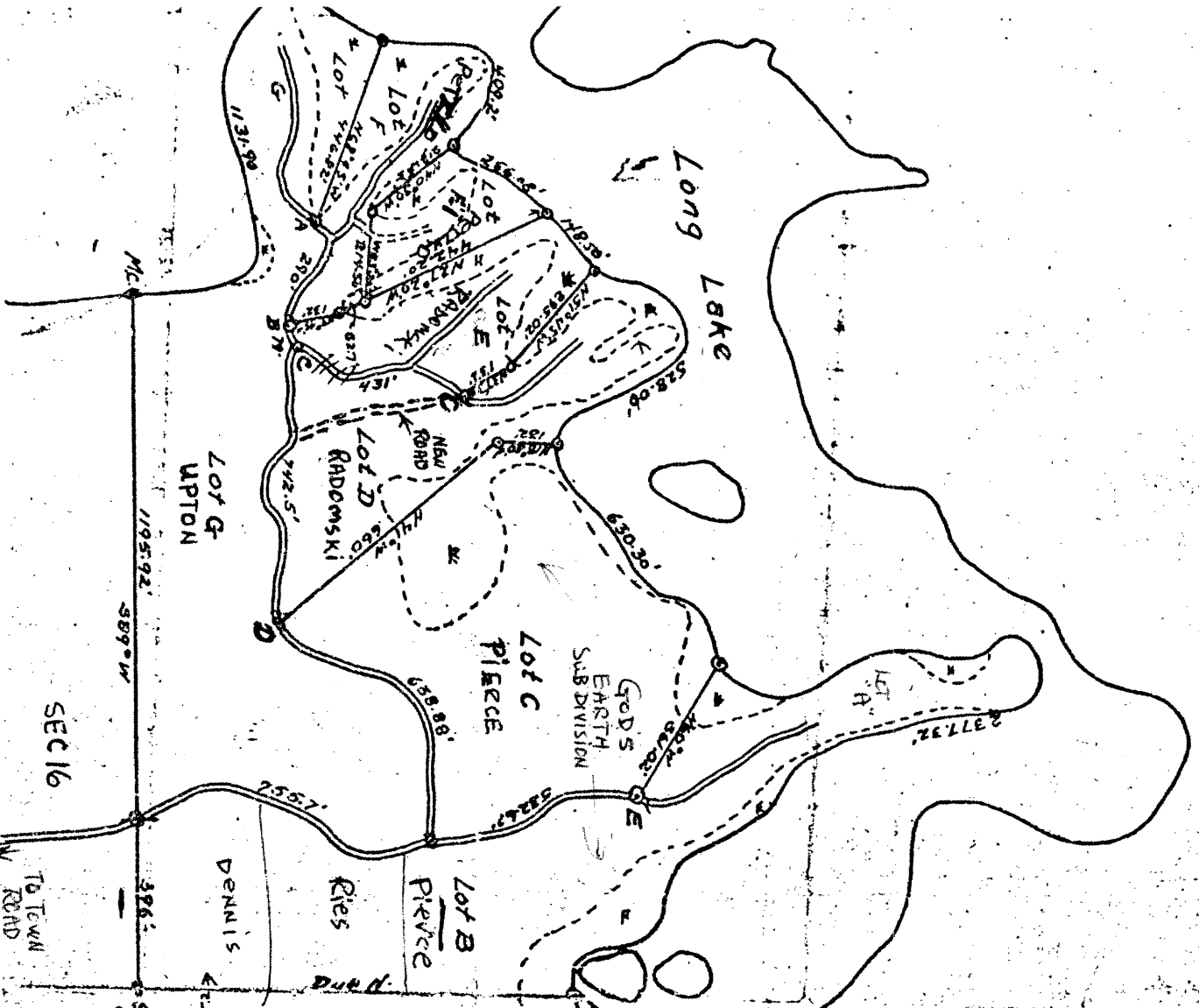
PLAT of Surveyed Lots

Long Lake, Oneida County, Wis.

Scale 1" = 330' Decl. 2 1/2° E

Lot Corner Ties

- Point A = 6.3764N + 26.9804W of Sec. Cn.
- B = 4.5764N + 23.4004W " " "
- C = 4.9504N + 22.2704W " " "
- D = 4.6004N + 12.4004W " " "
- E = 16.8404N + 6.8304W " " "
- F = 14.8904N of Section Corner



SEC 10

SEC 16

SEC 15

Sec. Cor
 Common to
 Secs. 9, 14, 15 & 16
 ← Sec 9
 7.58N, 7.82E, 4.79pm.

DENNIS

Ries

Piece B

Piece C

Lot D
 RADOMSKI

Lot G
 UPTON

Long Lake

TO TOWN ROAD

Mc

1195.92'

589°W

386'

7557'

742.5'

1131.98'

290'

156'

156'

156'

156'

156'

156'

156'

156'

156'

156'

156'

156'

156'

156'

156'

156'

156'

156'

156'

156'

156'

156'

156'

156'

156'

156'

156'

156'

156'

156'

156'

156'

156'

156'

156'

156'

156'

156'

156'

156'

156'

156'

156'

156'

156'

156'

156'

156'

156'

156'

156'

156'

156'

156'

156'

156'

156'

156'

156'

156'

156'

156'

156'

156'

156'

156'

156'

156'

156'

156'

156'

156'

156'

156'

156'

156'

156'

156'

156'

156'

156'

156'

156'

156'

156'

156'

156'

156'

156'

156'

156'

156'

156'

156'

156'

156'

156'

156'

156'

156'

156'

156'

156'

156'

156'

156'

156'

156'

156'

156'

156'

156'

156'

156'

156'

156'

156'

156'

156'

156'

156'

156'

156'

156'

156'

156'

156'

156'

156'

156'

156'

156'

156'

156'

156'

156'

156'

156'

156'

156'

156'

156'

156'

156'

156'

156'

156'

156'

156'

156'

156'

156'

156'

156'

156'

156'

156'

156'

156'

156'

156'

156'

156'

156'

156'

156'

156'

156'

156'

156'

156'

156'

156'

156'

156'

156'

156'

156'

156'

156'

156'

156'

156'

156'

156'

156'

156'

156'

156'

156'

156'

156'

156'

156'

156'

156'

156'

156'

156'

156'

156'

156'

156'

156'

156'

156'

156'

156'

156'

156'

156'

156'

156'

156'

156'

156'

156'

156'

156'

156'

156'

156'

156'

156'

156'

156'

156'

156'

156'

156'

156'

156'

156'

156'

156'

156'

156'

156'

156'

156'

156'

156'

156'

156'

156'

156'

156'

156'

156'

156'

156'

156'

156'

156'

156'

156'

156'

156'

156'

156'

156'

156'

156'

156'

156'

156'

156'

156'

156'

156'

156'