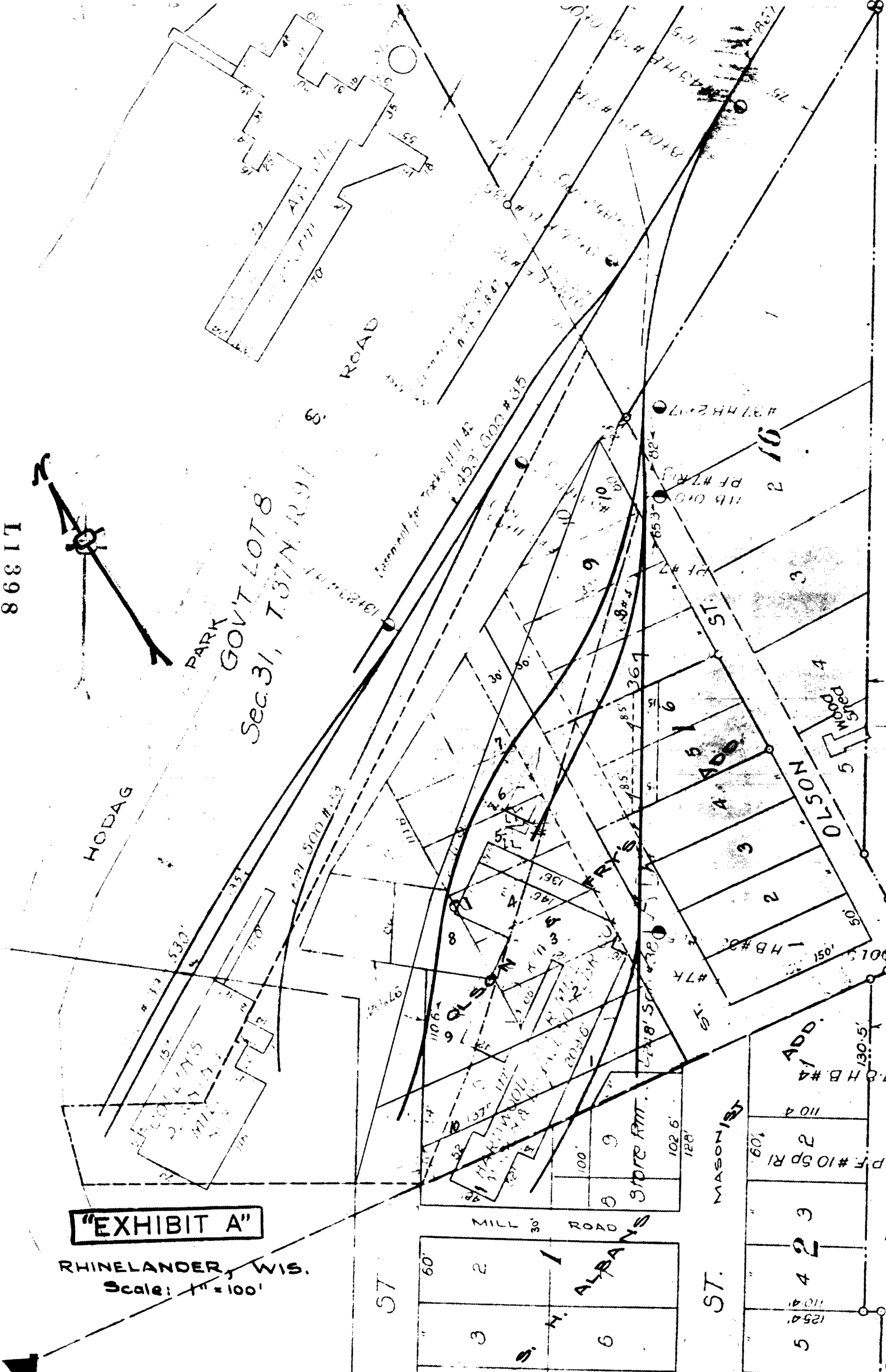


SEE V175-P236 FOR ORIG.

86817

86817



PARK
GOVT LOT 8
Sec. 31, T. 37N. R. 9E

HODAG

ROAD

Assessment for Taxes 11/11/42
L. 4537 000 #335

ADD.

WOOD

ADD.

"EXHIBIT A"

RHINELANDER, WIS.
Scale: 1" = 100'

ST.

MILL ROAD

ALBANS

MASON

ST.

STONE

86817