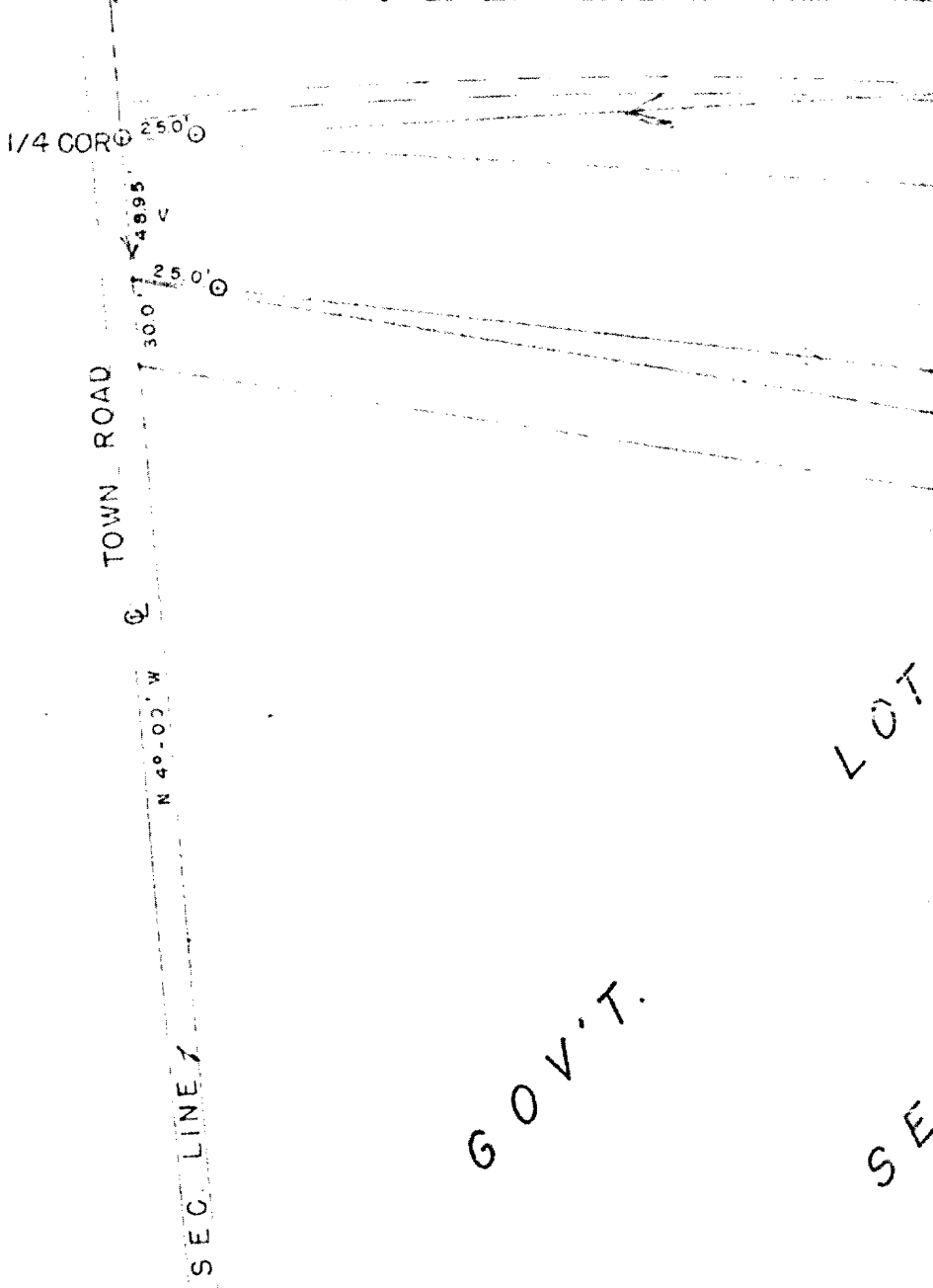


L146



GOV'T.

LOT

SE

GOV'T. LOT 7
RIIE

N 67°-05' E
824.63'

S 86°-15' E
727.25'

E-W 1/4 LINE

S 83°-03' E
553.69'

622.0'
S 80°-13' E

PARCEL 1

594.53'
S 80°-54' E

S 58°-31' E
742.6'

S 32°-33' W
330.0'

S 56°-51' W
460.0'

S 109°-21' W
470.00'

LOT

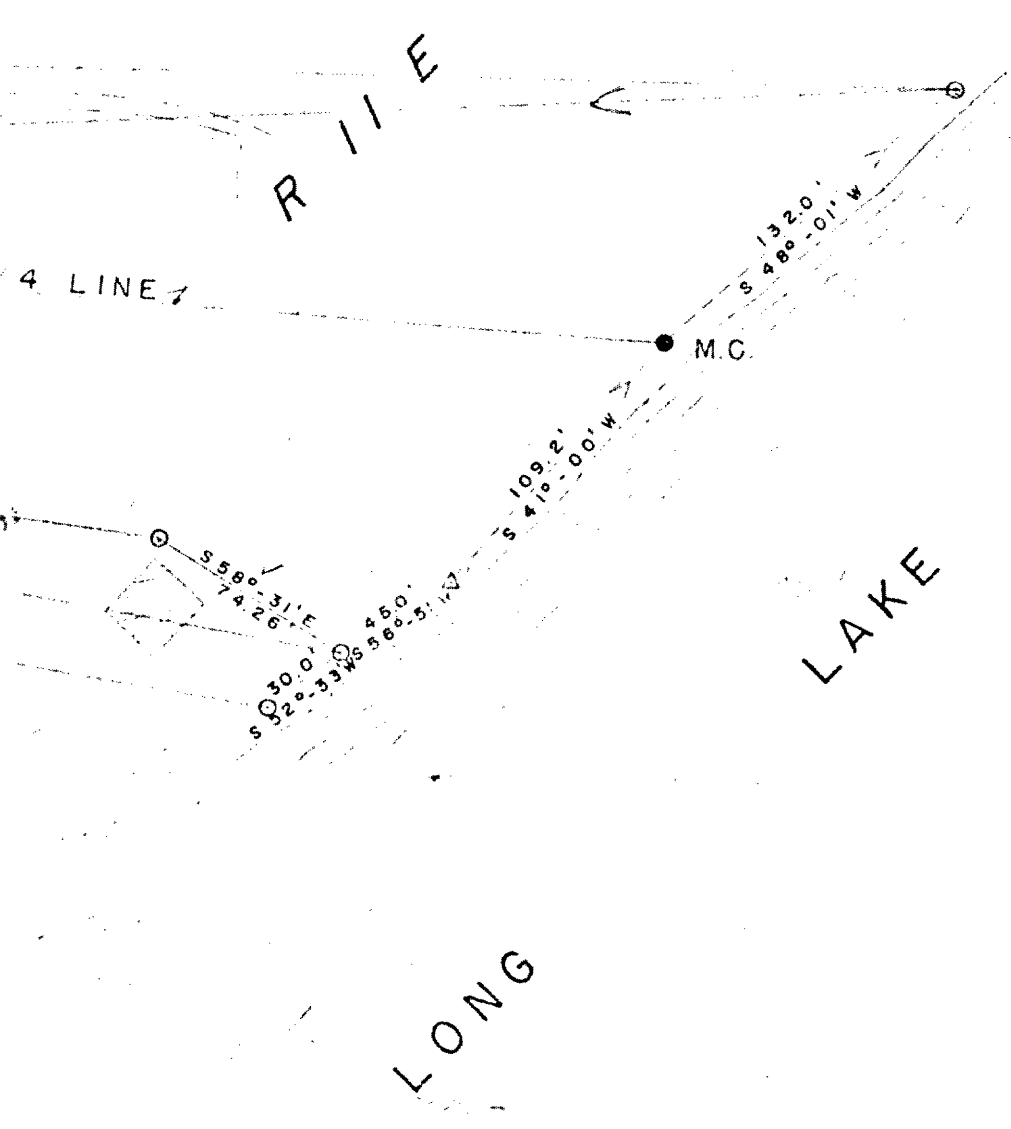
T 39 N

SEC. 8

LONG

L146

RECEIVED & FILED # **L146**
 Oneida County Surveyor's Office
 Date **FEB. 11. 1988**
 By *MJK*
 OCS Area #.....



RECEIVED & FILED # ~~L2086~~
 Oneida County Surveyor's Office
 Date *14 Sept '77*
 By *D. M. Winat*
 OCS Area # *5.912.8-3901*

○ IRON PIPE
 ○ BRASS CAP MON.

		SURVEY FOR	
		STEVE VANBUSSUM	
		CLEARWATER LAKE, WIS	
SCALE 1" = 50'	DATE 12/5/82	DRAWN BY R.E.S.	
DWG. NO. 3172-1	GENISOT ENGINEERING CO. RHINELANDER, WIS.		

L146