

PART OF THE NE1/4NW1/4, SEC. 1, T 36N, R 8E
 ONEIDA CO., WI.
 FOR H. FREUND

L142



OCCUPIED 1/16 LINE

6" X 6" CONCRETE

1/16 MON. 35'

E-W SEQ. LINE N 89° 32' W 1319.6' CO. TR. "K"

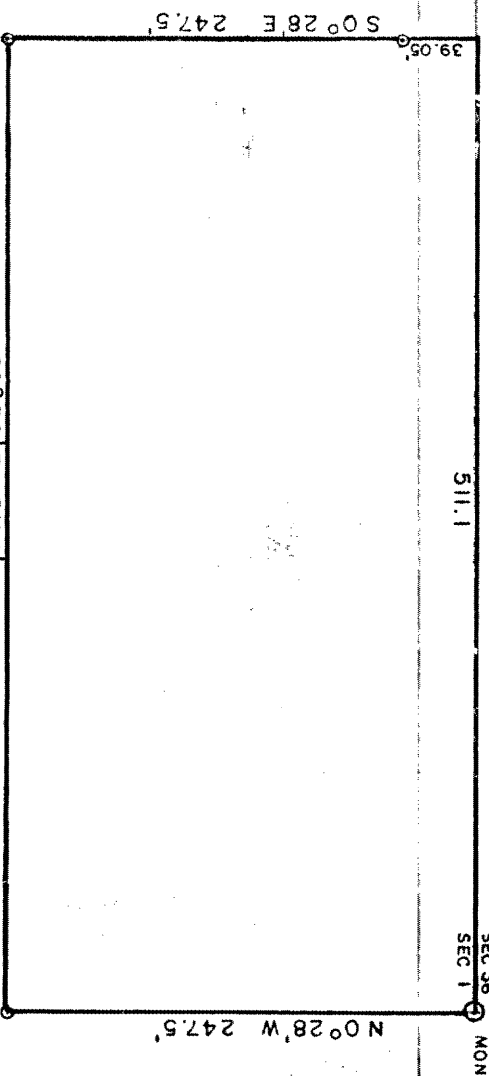
808.5'

3' SOUTH OF C

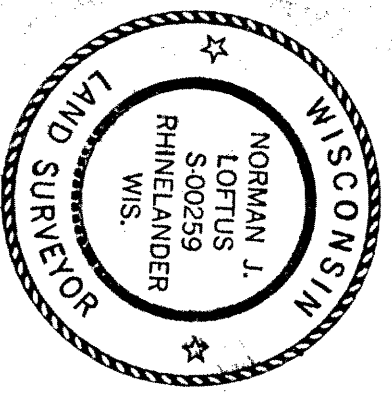
BT TAN 12 S 28° 9' W 39.6'

LARSON DR.

1/4 SEC 36 MON SEC 1



- SCALE 1" = 100'
- RAILROAD SPIKE
 - IRON PIPE
- 8-31-77
 N. LOFTUS



RECEIVED & FILED ~~12-02-5~~
 Oneida County Surveyor's Office
 Date: 14 Sept 1977
 By: D. M. W. [Signature]
 CCS Area # 3-1-3608

RECEIVED & FILED # L142
 Oneida County Surveyor's Office
 Date: FEB. 11 1986
 By: MTH
 CCS Area #