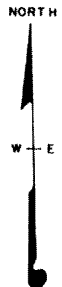


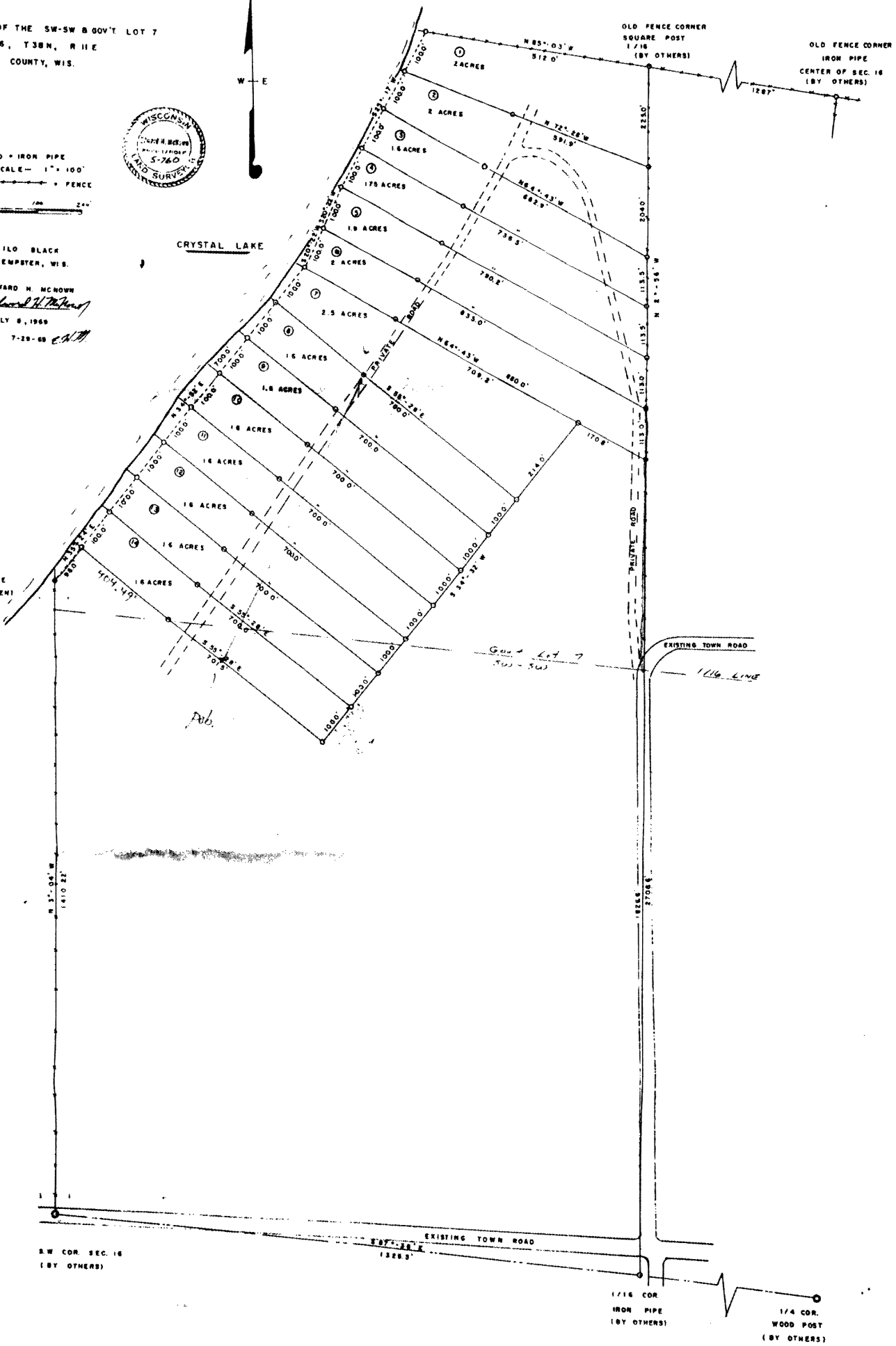
PARTS OF THE SW-SW & 00V'T LOT 7  
SEC. 16, T38N, R11E  
ONEIDA COUNTY, WIS.



O = IRON PIPE  
SCALE - 1" = 100'  
--- = FENCE

FOR: MILO BLACK  
KEMPSTER, WIS.  
BY: EDWARD H. MCNOW  
*Edward H. McNow*  
JULY 8, 1968  
REVISED 7-29-68 *EM*

M.C.  
IRON PIPE  
(WNCENTSEN)



M.S. 1008

MAP #	<b>L1473</b>
DATE FILED	DEC. 04. 1968
BY	<i>JB</i>
DESCRIPTION FILED	
ONEIDA CO. SURVEYOR'S OFFICE	