

L 1480

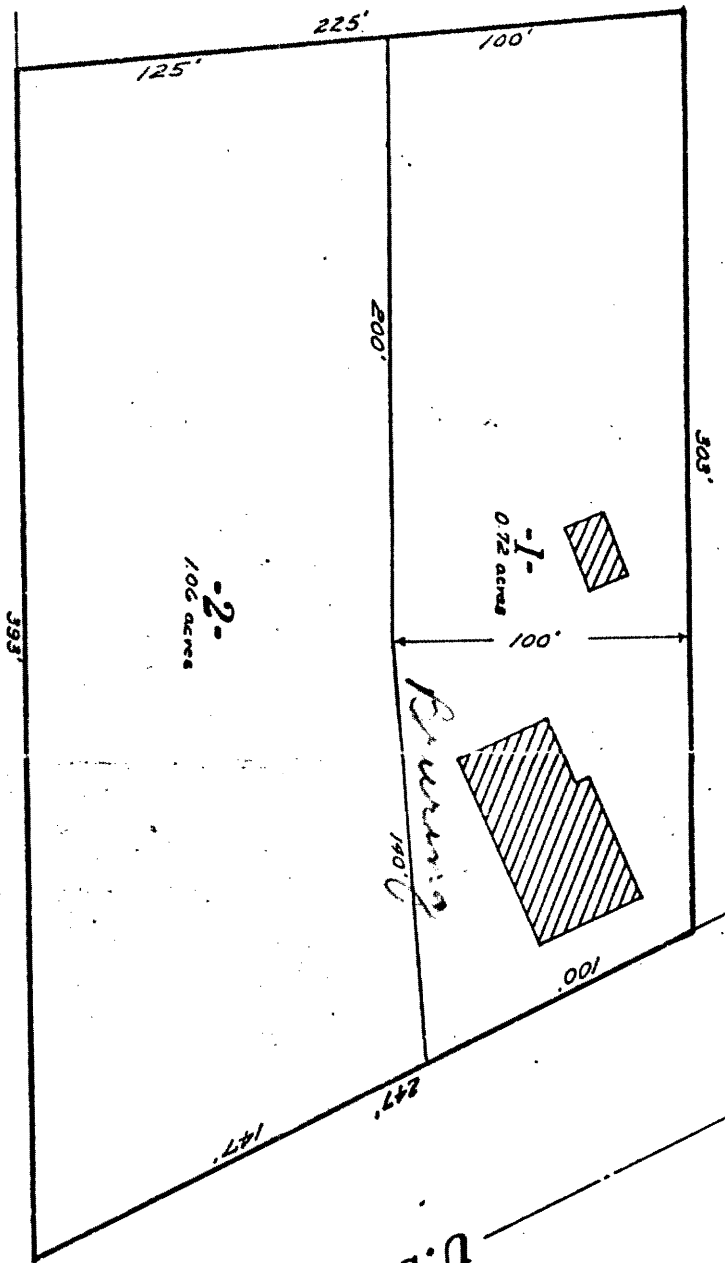
PRELIMINARY

Scale 1" = 50'

March, 1974
M.S.D. Sept. 1975

Part of
OUTLOT 7
of the original plat of the
VILLAGE OF HAZELHURST
in
GOV'T. LOT 6, SECTION 3, T38N, R6E
Oneida County, Wis.

ONEIDA ROAD



U.S. HIGHWAY

"51"

MAP # **L 1480**
 DATE FILED **JAN 27 1997**
 BY *gfb*
 DESCRIPTION FILED
 ONEIDA CO. SURVEYOR'S OFFICE

Sec 3

Northwoods Surveyors Inc.

Wm. H. F. F.
Land Surveyor

L 1480

15-3-926

5. 2012