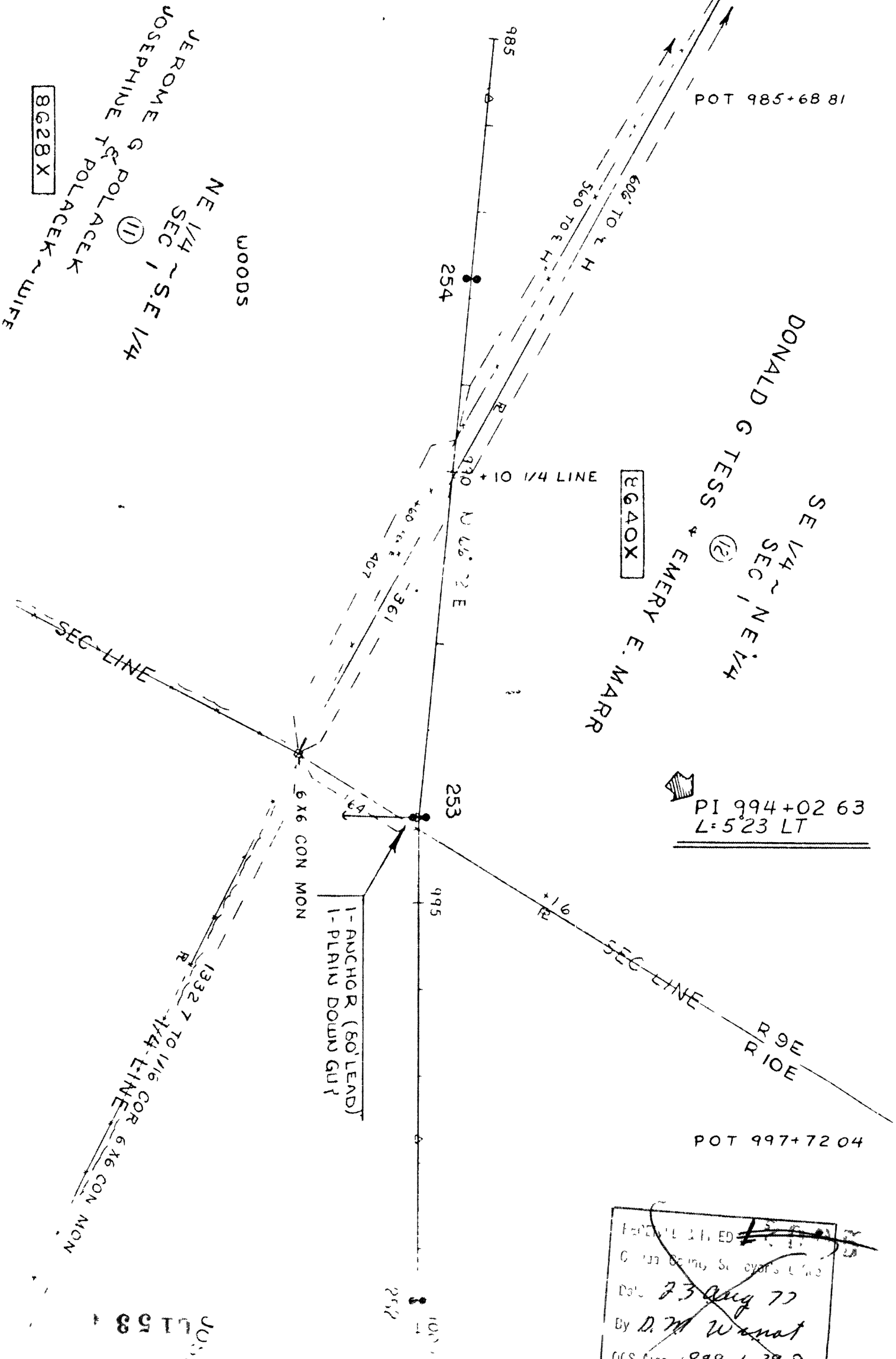


PLAN	BY	DATE
NOTE BOOK	ALIGNMENT CHECKED	
No.	RT. OF WAY CHECKED	

RECEIVED & FILED # 1153
 Oneida County Surveyor's Office
FEB 11 1986
 By *M J H*
 OCS Area #

TOWN OF SUGAR CAMP T. 39 N. ~ R 9 E ONEIDA COUNTY TOWN OF LINCOLN



RECEIVED & FILED ~~1153~~
 Oneida County Surveyor's Office
 Date *23 Aug 77*
 By *D. M. W. W. W.*
 OCS Area # *889-1-39-9*

8628X

8640X

JUST
 1153