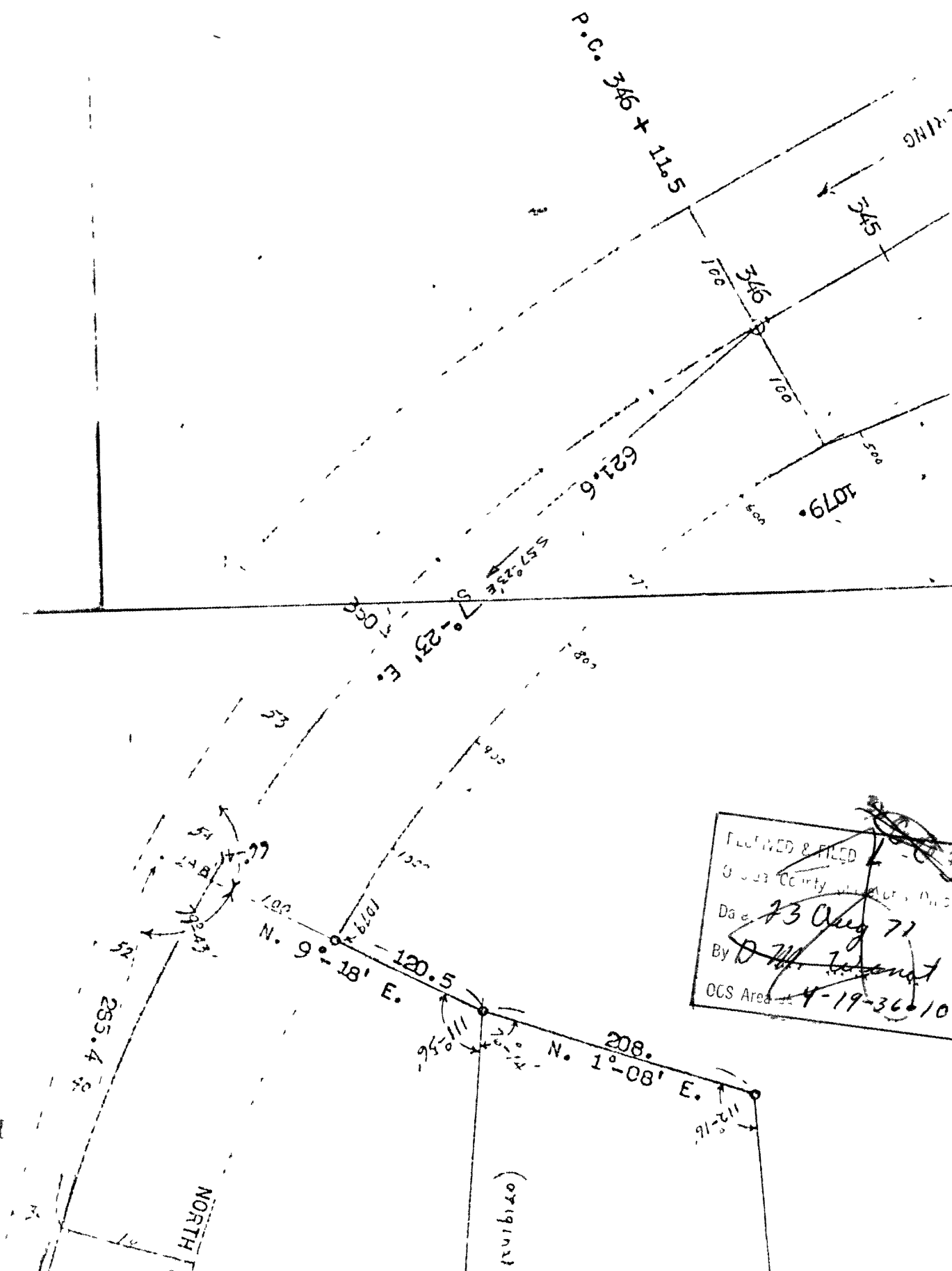


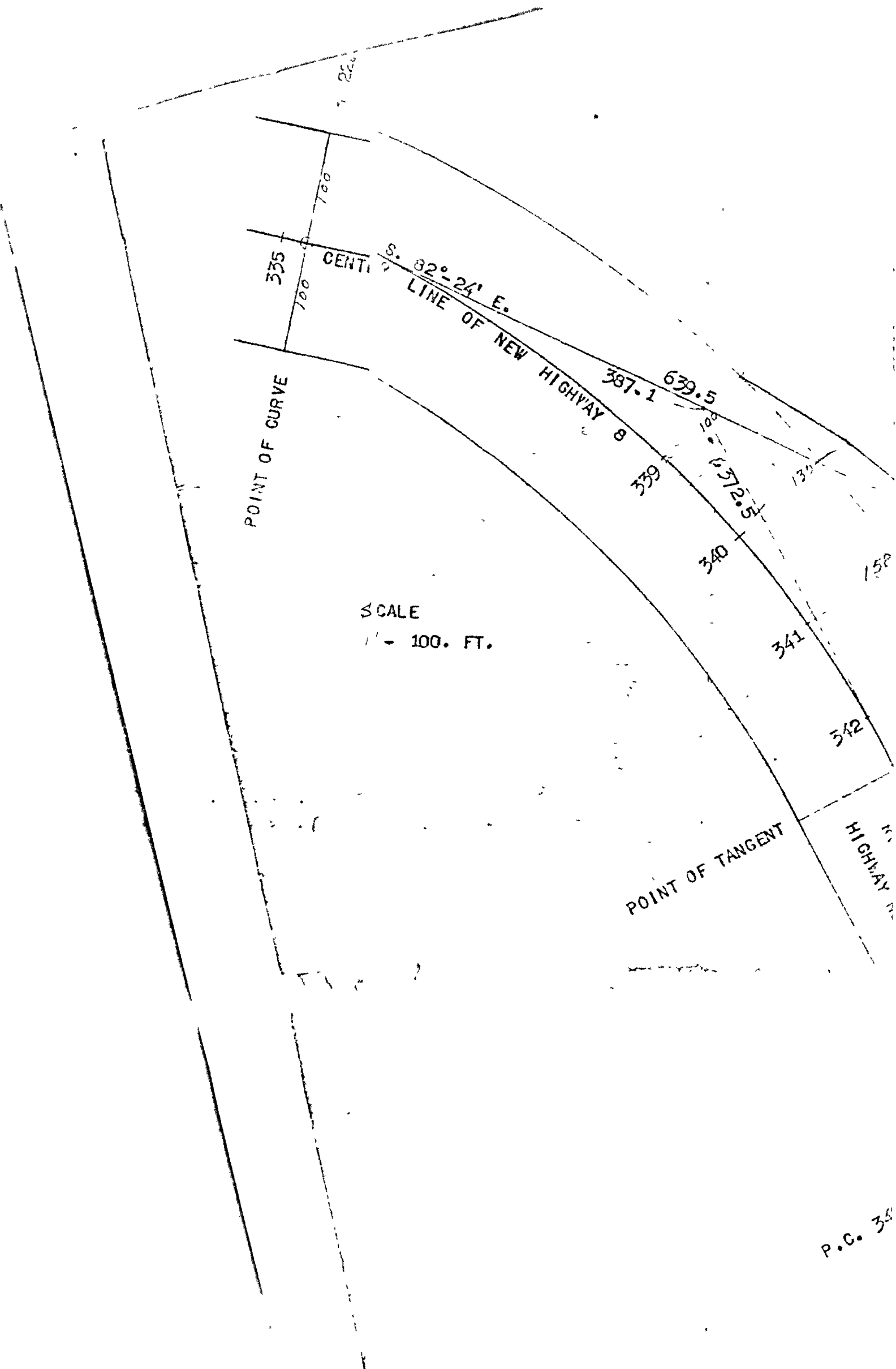
RECEIVED & FILED # **L154**
 OCS Area
 Date **FEB 11 1965**
 By *MTH*
 OCS Area

SURVEYED & MAPPED
 BY
KEITH W. HALL
 SURVEYOR.
PHILADELPHIA, WISCONSIN.
 1954.



RECEIVED & FILED
 OCS Area
 Date **23 Aug 71**
 By *D. W. [unclear]*
 OCS Area **4-19-36-10**

L154



335

CENT

S. 82°-24' E.

LINE OF NEW HIGHWAY 8

POINT OF CURVE

SCALE
1" = 100. FT.

387.1

639.5

339

340

341

342

POINT OF TANGENT

HIGHWAY

P.C. 35

L154

SURVEYED & MAPPED
BY
KEITH M. HALL

SECTION CORNER
COUNTY
MONUMENT

13/18
24/19

OLD HIGHWAY - NOT VACATE

GOV. LOT 2,
SECTION 19, T. 36 N., R. 10 E.,
ONEIDA COUNTY, WISCONSIN.

342

+ 55.6

HIGHWAY NUMBERING

S. 45°-45' E.

1079.

346

P.C. 346 + 11.5

621.6

S. 7°-23' E.

N. 9°-18' E.

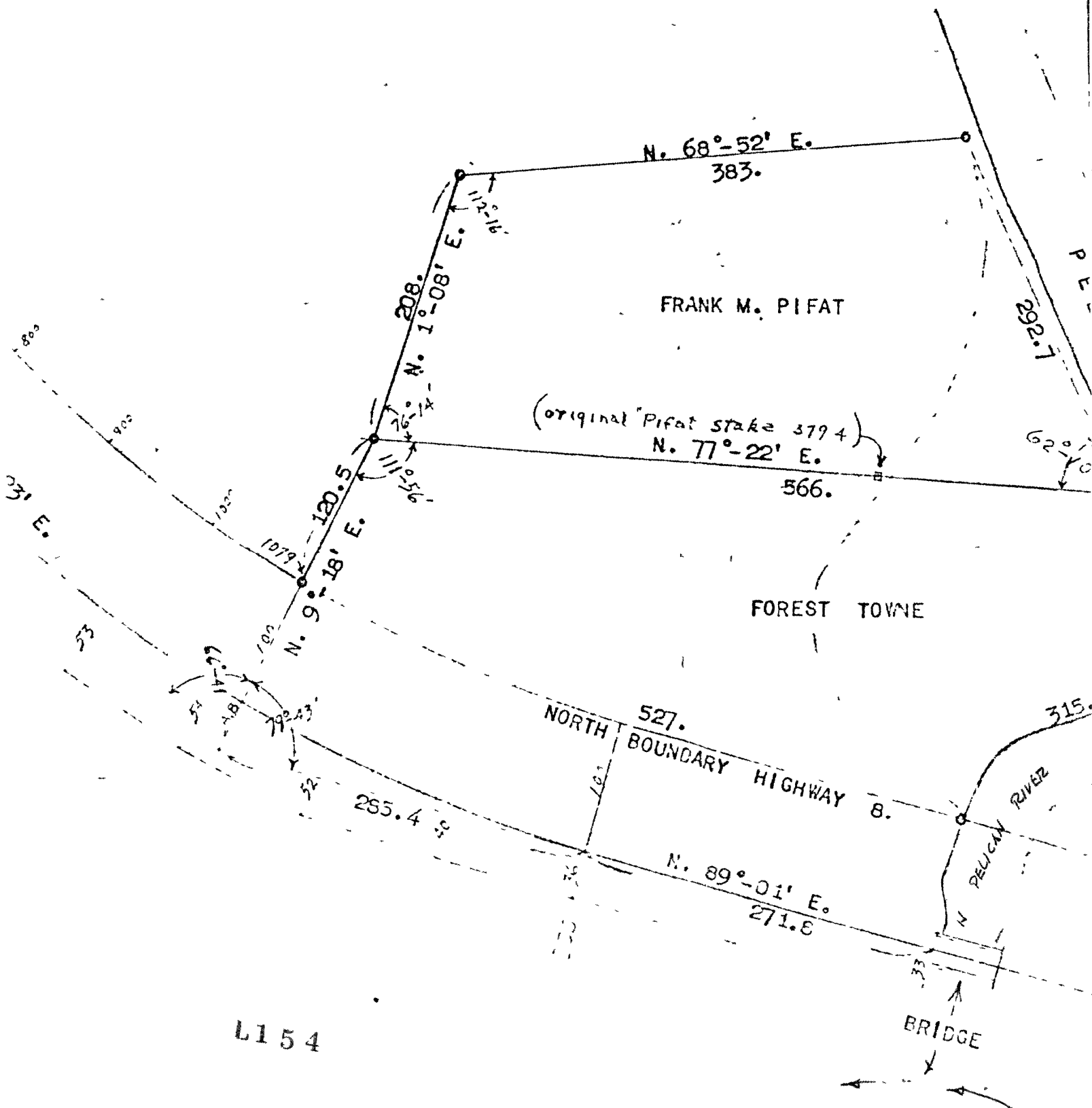
208.

N. 1°-07'

L154

265.4

GOV. LOT 2,
SECTION 19, T. 36 N., R. 10 E.,
ONEIDA COUNTY, WISCONSIN.



L154