

MAP # L1542

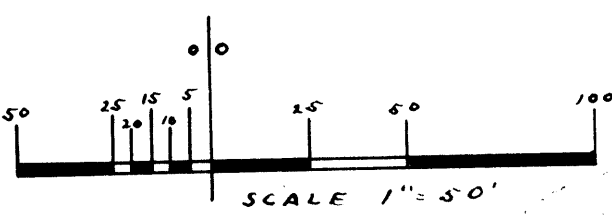
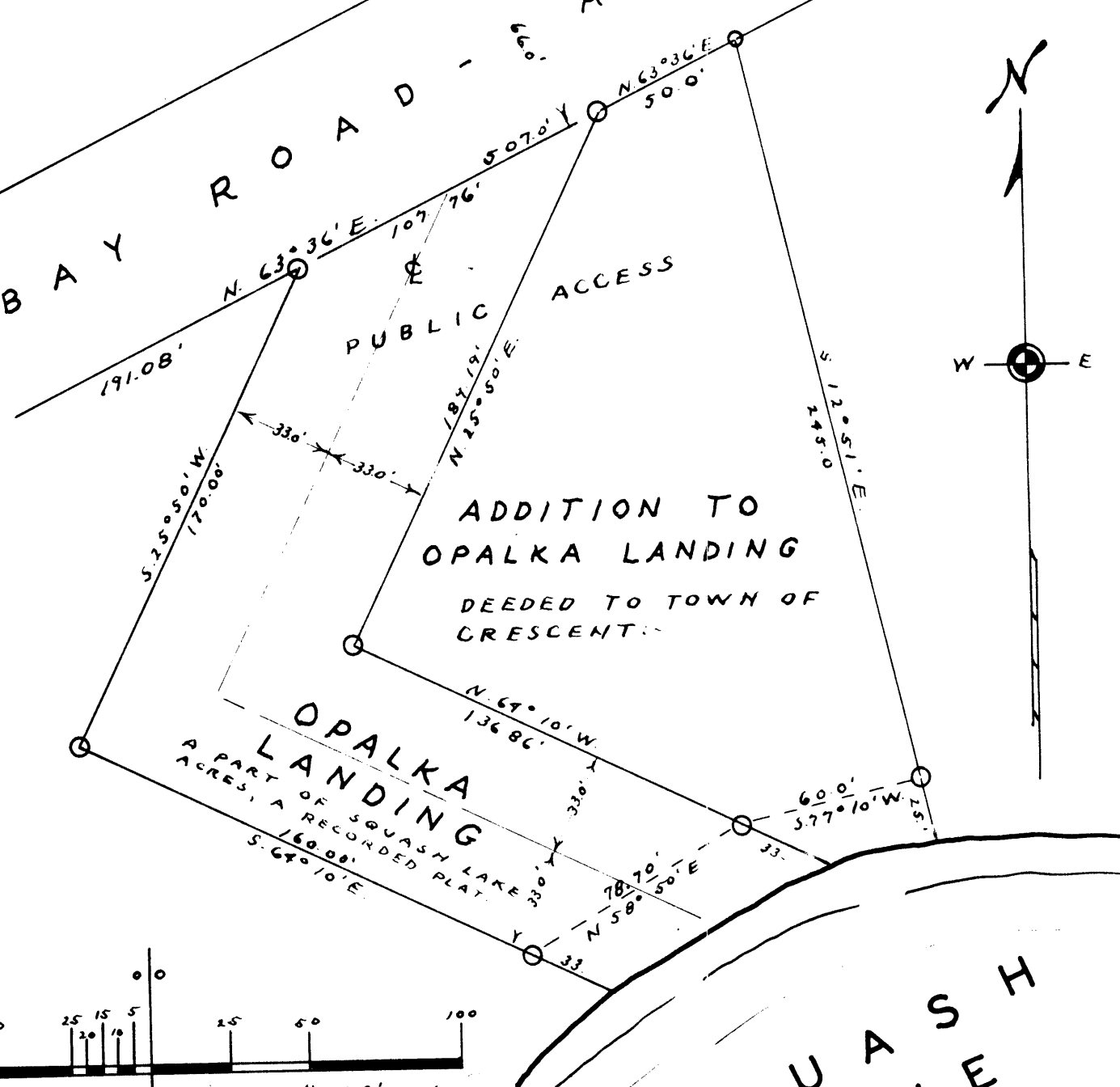
DATE FILED FEB 06 1968

BY
DESCRIPTION FILED
ONEIDA CO. SURVEYOR'S OFFICE

SURVEY OF ADDITION TO OPALKA LANDING

IN GOVT. LOT 3, SEC 18
T.36N., R.8E.
ONEIDA COUNTY, WISCONSIN.

BAY ROAD - A TOWN ROAD



○ 1" IRON PIPE
 ○ 2" IRON PIPE

L1542 DATED: 1-11-69
 By: M. Poehle
 WIS. S-140

L1542

L1542