

| | |
|------------------------------|-------------|
| MAP # | L1599 |
| DATE FILED | JAN 15 1999 |
| BY | DAD |
| DESCRIPTION FILED | |
| ONEIDA CO. SURVEYOR'S OFFICE | |

LANDMARK MONUMENT PRESERVATION RECORD

Recorders Data

LOCATION: Probable CE1/16th corner monument.

FORTY/GOVT LOT: N/A SECTION: 29 TOWNSHIP 37 NORTH RANGE 7 EAST

(CITY/VILLAGE)(TOWN) OF: Cassian COUNTY OF: Oneida

Description of Landmark Monument and location history, if known:

Top of an older undisturbed 1" square iron bar found flush in existing blacktop roadway pavement approximately 3' south of mat centerline. A fenceline leads South 8'+/- West along East edge of an open field.

This monument is similar to that iron bar previously recovered per USPLS location record filed in Oneida County survey records for the East 1/4 corner of this Section.

This monument should be verified by subsequent land survey retracement division of this Section.

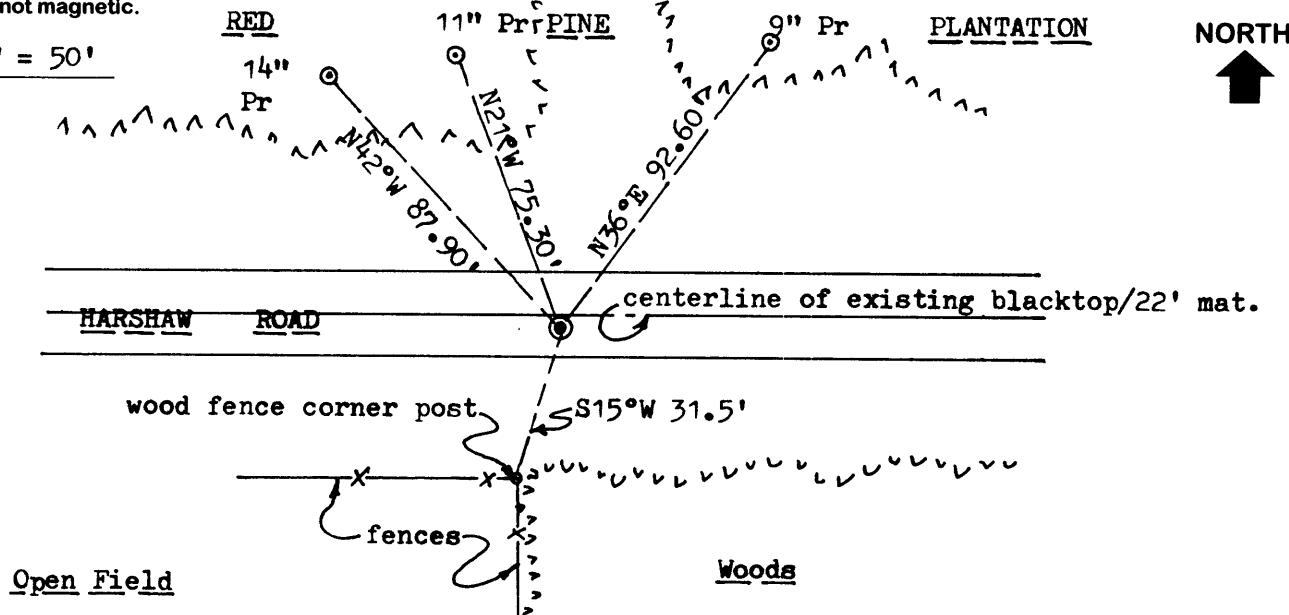
This recovery completed October 28, 1998; there were no witnesses other than vehicular drive-bys.

This recovery completed at the request of Oneida County Surveyor Mike Romportl.

No other metallic evidence detected within 1/2 chain of this monument location.

Plan view map of landmark monument location to scale with magnetic compass bearing and horizontal distance ties to a minimum of three (3) described witness or reference monuments of concrete, natural stone, metal, live bearing trees or equivalent material; indicate the basis for bearings if not magnetic.

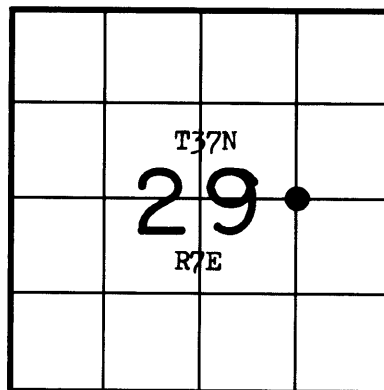
SCALE: 1" = 50'



Unless otherwise indicated, all bearing tree ties are to a .25" dia. by 2.5" long PK nail with a 1.25" dia. steel washer driven into unblazed right face and a .25" dia. by 2.5" long PK nail with a 2" dia. steel washer stamped 'BT' is also driven into unblazed face of bearing tree at DBH; the basis for measured bearings is magnetic to nearest degree and all tie distances are horizontal measure to nearest 1/100th feet.

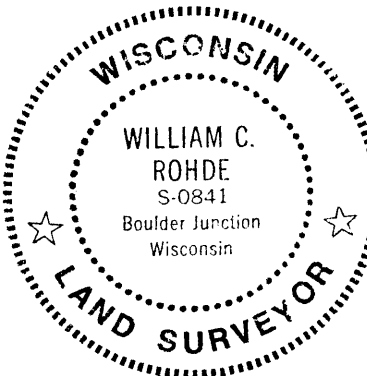
PROFESSIONAL LAND SURVEYOR CERTIFICATE:

I, William C. Rohde, hereby certify that I am a duly licensed Professional Land Surveyor in the State of Wisconsin, that the location of this Landmark Monument was determined by me, or under my direct supervision and control, for preservation purposes only and without any attestation of correctness, so that verification may be made by a subsequent land survey of public record; that this Landmark Monument Preservation Record is true and correct to the best of my knowledge and belief.



SECTION LOCATION MAP

INDEX NO.



RLS SEAL

SHEET NO. 1 OF 1

Signature: *William C. Rohde* Date: 12-8-98