

MAP # **L1600**
 DATE FILED **JAN 15 1999**
 BY **DAF**
 DESCRIPTION FILED
 ONEIDA CO. SURVEYOR'S OFFICE
 Recorders Data

LANDMARK MONUMENT PRESERVATION RECORD

LOCATION: Probable C1/4 corner monuments.

FORTY/GOVT LOT: N/A SECTION: 21 TOWNSHIP 37 NORTH RANGE 7 EAST/WEST

(CITY/VILLAGE)(TOWN) OF: Cassian COUNTY OF: Oneida

Description of Landmark Monument and location history, if known:

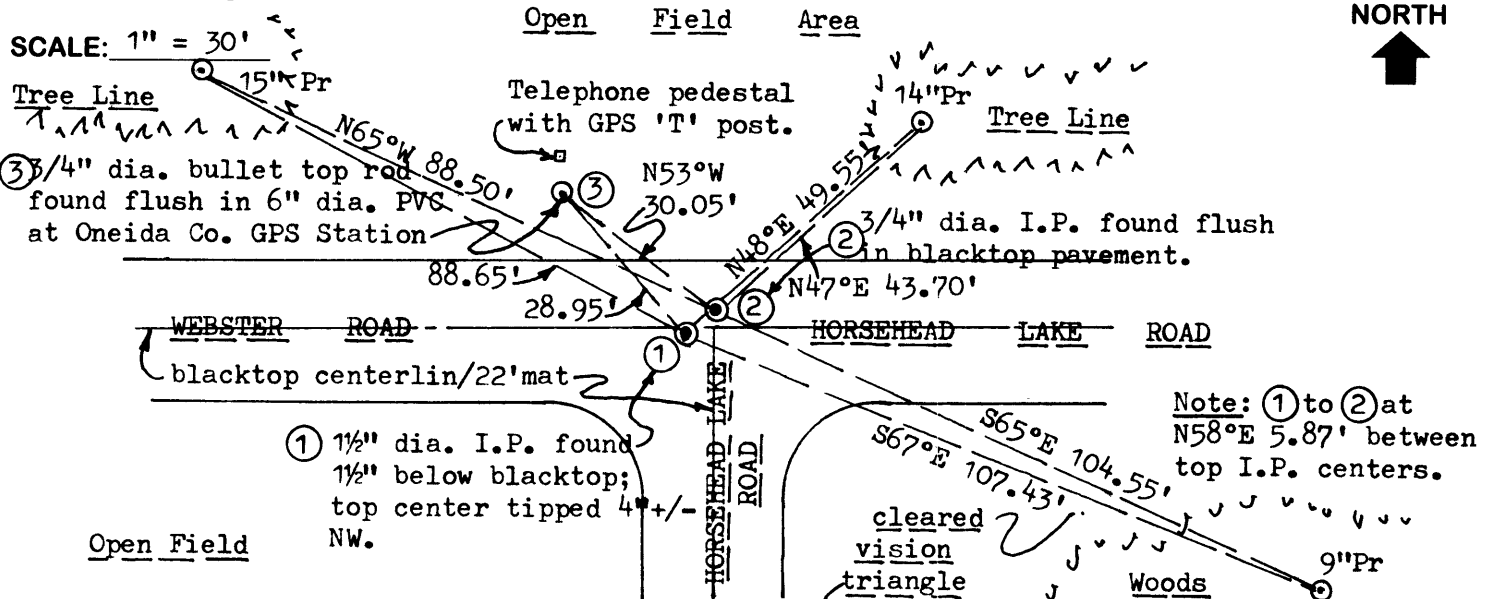
Two(2) iron pipe monuments found at probable C1/4 corner locations as noted herein; no other metallic evidence observed nor detected within roadway area.

In 1935, Maine noted a monument symbol at this C1/4 as "Ira Smiths Ctr" during a survey for town roadway centerlines, but did not further describe or reference same; however, Maine noted such corner at a distance of 2631.5' North of the South 1/4 corner of Section 21, which compares within a few feet to either iron pipe found. In 1966, Resvick notes an iron pipe at the C1/4 corner which he used to set the CE1/16th corner midway on a right line to the East 1/4 corner of Section 21, but did not reference same, per his Plat of Survey filed as B-3310 in Oneida County survey records.

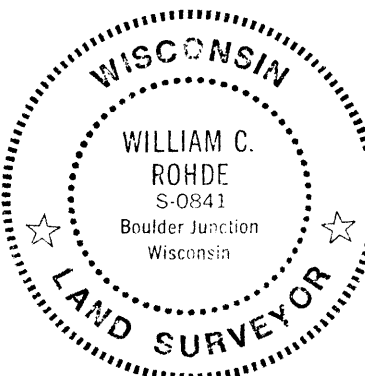
See Landmark Monument Preservation Record filed for the CE1/16th corner of Section 21 and EDM Total Station Traverse data on reverse involving both iron pipe monuments found and referenced herein. Future verification recommended by sectional 1/4 line retracement.

This recovery completed October 28, 1998 with the approval of Oneida County Surveyor Mike Romportl, for preservation and verification purposes; there were no witnesses other than by vehicular drive-bys.

Plan view map of landmark monument location to scale with magnetic compass bearing and horizontal distance ties to a minimum of three (3) described witness or reference monuments of concrete, natural stone, metal, live bearing trees or equivalent material; indicate the basis for bearings if not magnetic.



Unless otherwise indicated, all bearing tree ties are to a .25" dia. by 2.5" long PK nail with a 1.25" dia. steel washer driven into unblazed right face and a .25" dia. by 2.5" long PK nail with a 2" dia. steel washer stamped 'BT' is also driven into unblazed face of bearing tree at DBH; the basis for measured bearings is magnetic to nearest degree and all tie distances are horizontal measure to nearest 1/100th feet.



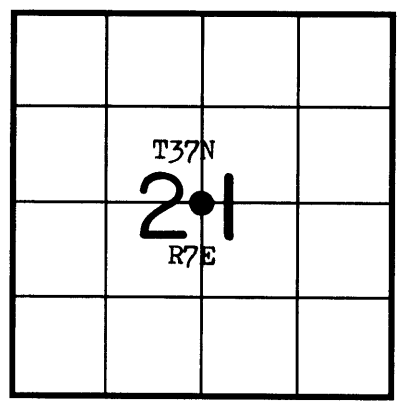
RLS SEAL

SHEET NO. 1 OF 1

PROFESSIONAL LAND SURVEYOR CERTIFICATE:

I, William C. Rohde, hereby certify that I am a duly licensed Professional Land Surveyor in the State of Wisconsin, that the location of this Landmark Monument was determined by me, or under my direct supervision and control, for preservation purposes only and without any attestation of correctness, so that verification may be made by a subsequent land survey of public record; that this Landmark Monument Preservation Record is true and correct to the best of my knowledge and belief.

William C. Rohde Date: 12-8-98
Signature



SECTION LOCATION MAP

INDEX NO. _____