

RECEIVED & FILED # **L163**
 Oneida County Surveyor's Office
 Date **FEB. 1 1 1986**
 By **M.J.H.**
 OCS Area #.....

RECEIVED & FILED # ~~12992~~
 Oneida County Surveyor's Office
 Date **14 Oct '80**
 By **D.M. Wendt**
 OCS Area # ~~X-16-36-11~~

THOMAS APPOINT

1,819#16 - 16-36-11

MAP OF SURVEY FOR G. HABICH, JR.

PART OF THE SE 1/4 - SE 1/4, SEC. 16, T36N, R11E, TOWN OF MONICO, ONEIDA COUNTY, WISCONSIN.

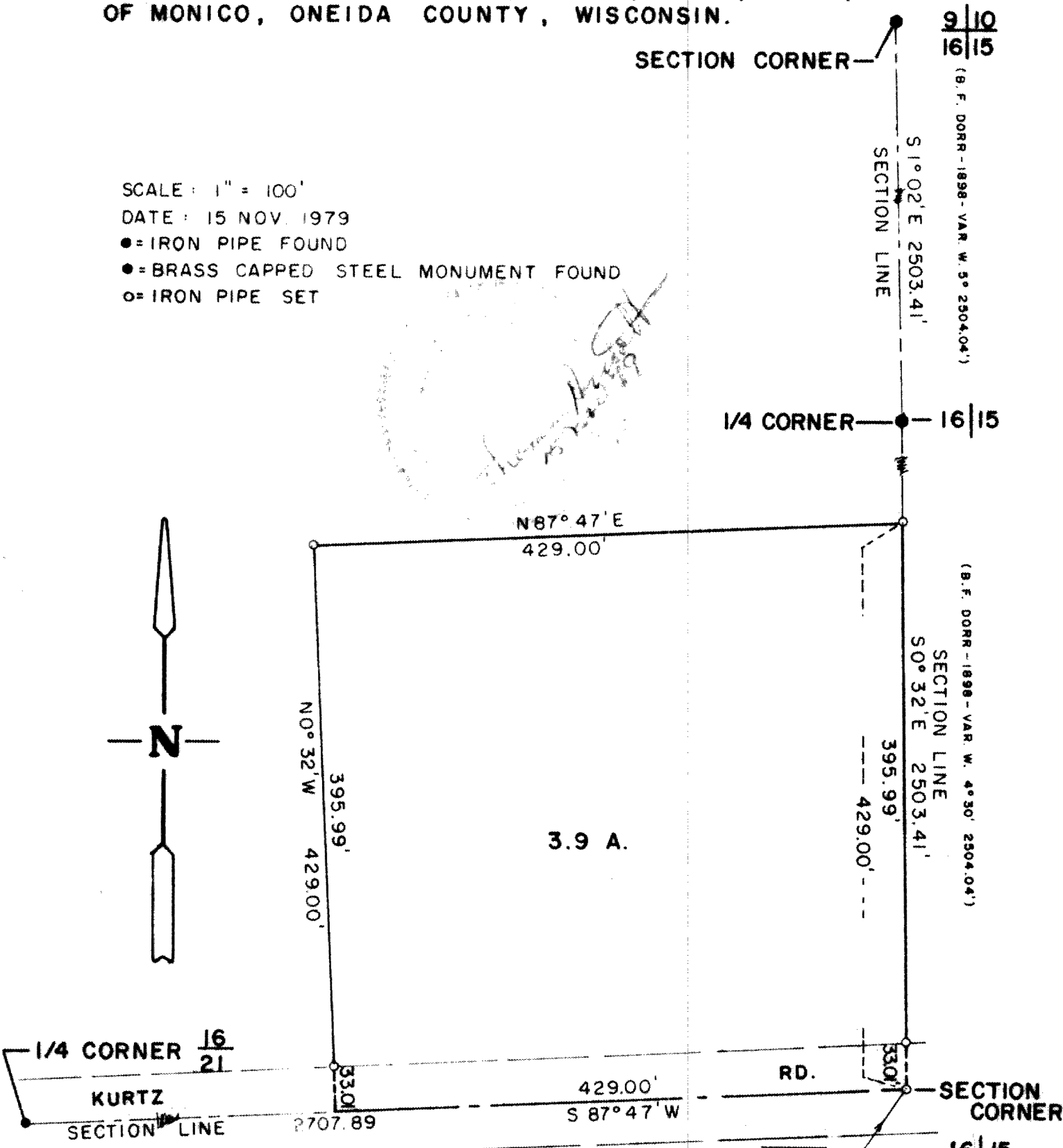
SCALE: 1" = 100'

DATE: 15 NOV. 1979

● = IRON PIPE FOUND

● = BRASS CAPPED STEEL MONUMENT FOUND

○ = IRON PIPE SET



SECTION CORNER SET BY USING DORR'S 0° 30' VARIATION AND THE SAME DISTANCE AS THAT FROM THE 1/4 SECTION CORNER NORTH TO THE SECTION CORNER - SECTIONS 9, 10, 15, 16. B. F. DORR'S SURVEY, JUNE 1, 1898.

8917