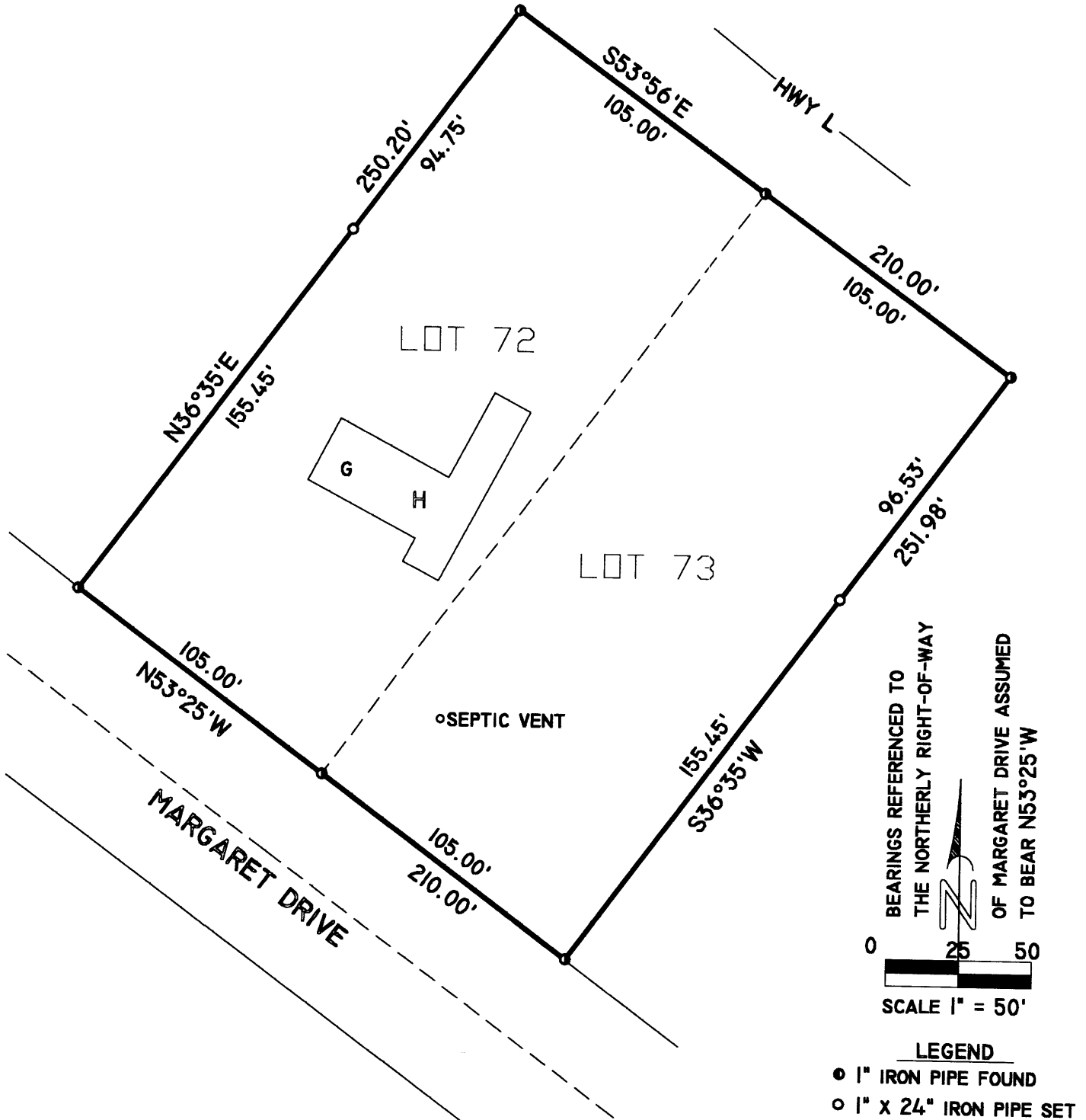


MAP # **L1645**
 DATE FILED **AUG 27 1999**
 BY *JB*
 DESCRIPTION FILED
 ONEIDA CO. SURVEYOR'S OFFICE

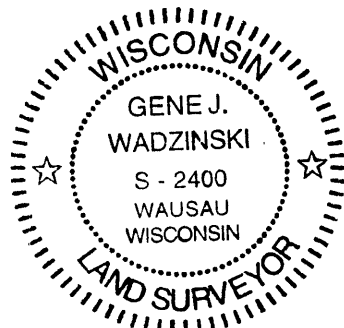
LOTS 72 & 73 IN THE DOOLITTLE-BARDEN'S NOKOMIS SHORES SUBDIVISION, DIVISION 2, SECTION 34, T36N, R6E, TOWN OF NOKOMIS, ONEIDA COUNTY, WISCONSIN



SURVEYOR CERTIFICATE

Gene J. Wadzinski
 GENE J. WADZINSKI JULY 29, 1999

I, GENE J. WADZINSKI, REGISTERED LAND SURVEYOR, HEREBY CERTIFY THAT I HAVE FOUND ALL LOT CORNERS OF LOTS 72 AND 73 OF THE DOOLITTLE-BARDEN'S NOKOMIS SHORES SUBDIVISION, DIVISION 2 AND THAT I HAVE PLACED A 1" PIPE ON THE WESTERLY LINE OF LOT 72 AT A DISTANCE OF 155.45' FROM THE SOUTHWESTERLY CORNER OF LOT 72 AND HAVE PLACED A 1" PIPE ON THE EASTERLY LINE OF LOT 73 AT A DISTANCE OF 155.45' FROM THE SOUTHEASTERLY CORNER OF LOT 73.



L1645

L1645