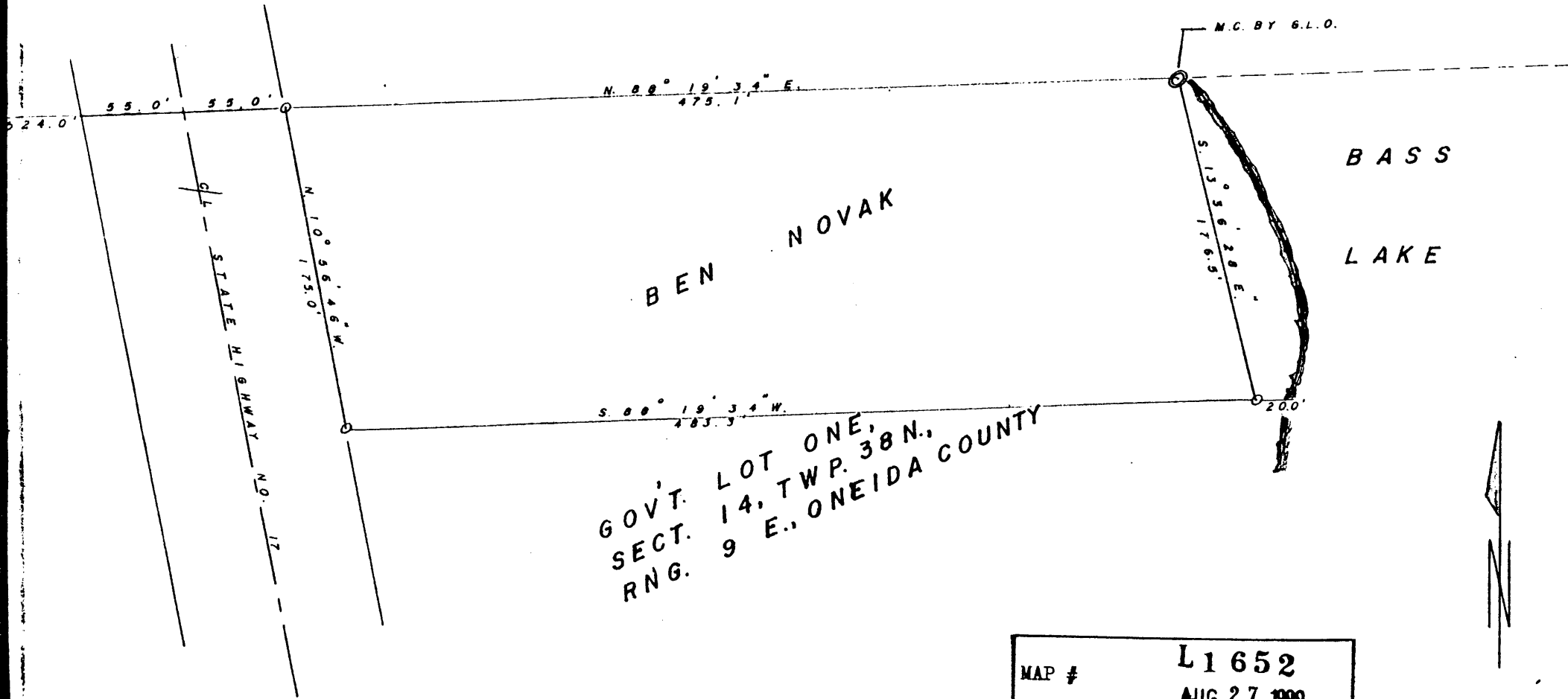


L1652

L1652



GOVT. LOT ONE,
 SECT. 14, TWP. 38 N.,
 RNG. 9 E., ONEIDA COUNTY

MAP #	L1652
DATE FILED	AUG 27 1999
BY	<i>JB</i>
DESCRIPTION FILED	
ONEIDA CO. SURVEYOR'S OFFICE	