

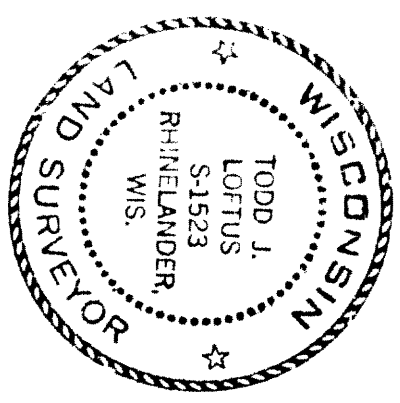
RECORDED & FILED # ~~12204~~
 On file Oneida County Surveyor's Office
 Date: ~~11 March 80~~
 By: ~~D.M. W. Hunt~~
 OCS Area # ~~15-17-3709~~

RECEIVED & FILED # **L169**
 Oneida County Surveyor's Office
 Date: **FEB. 1 1 1986**
 By: **M.J.H.**
 OCS Area #

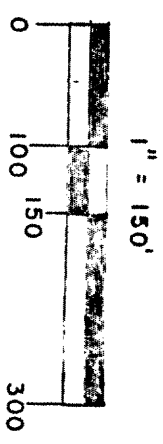
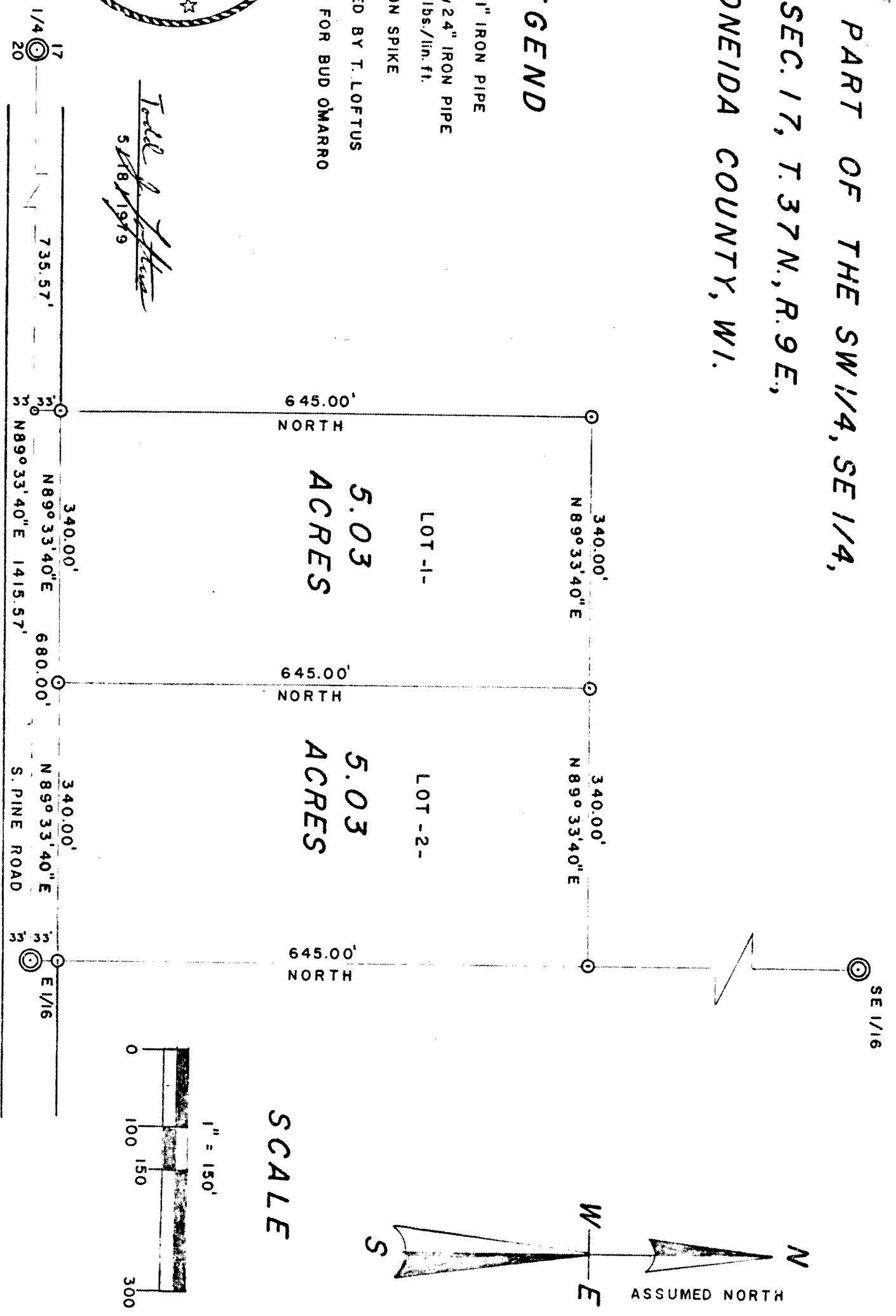
**PART OF THE SW 1/4, SE 1/4,
 SEC. 17, T. 37 N., R. 9 E.,
 ONEIDA COUNTY, WI.**

- FOUND 1" IRON PIPE
- SET 1" by 24" IRON PIPE
- SET IRON SPIKE

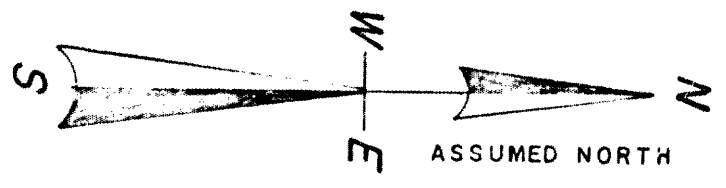
SURVEYED BY T. LOFTUS
 SURVEY FOR BUD OMARRO



Todd J. Loftus
 5/18/1979



SCALE



L169

NO. 001

DRAFTED BY T. LOFTUS