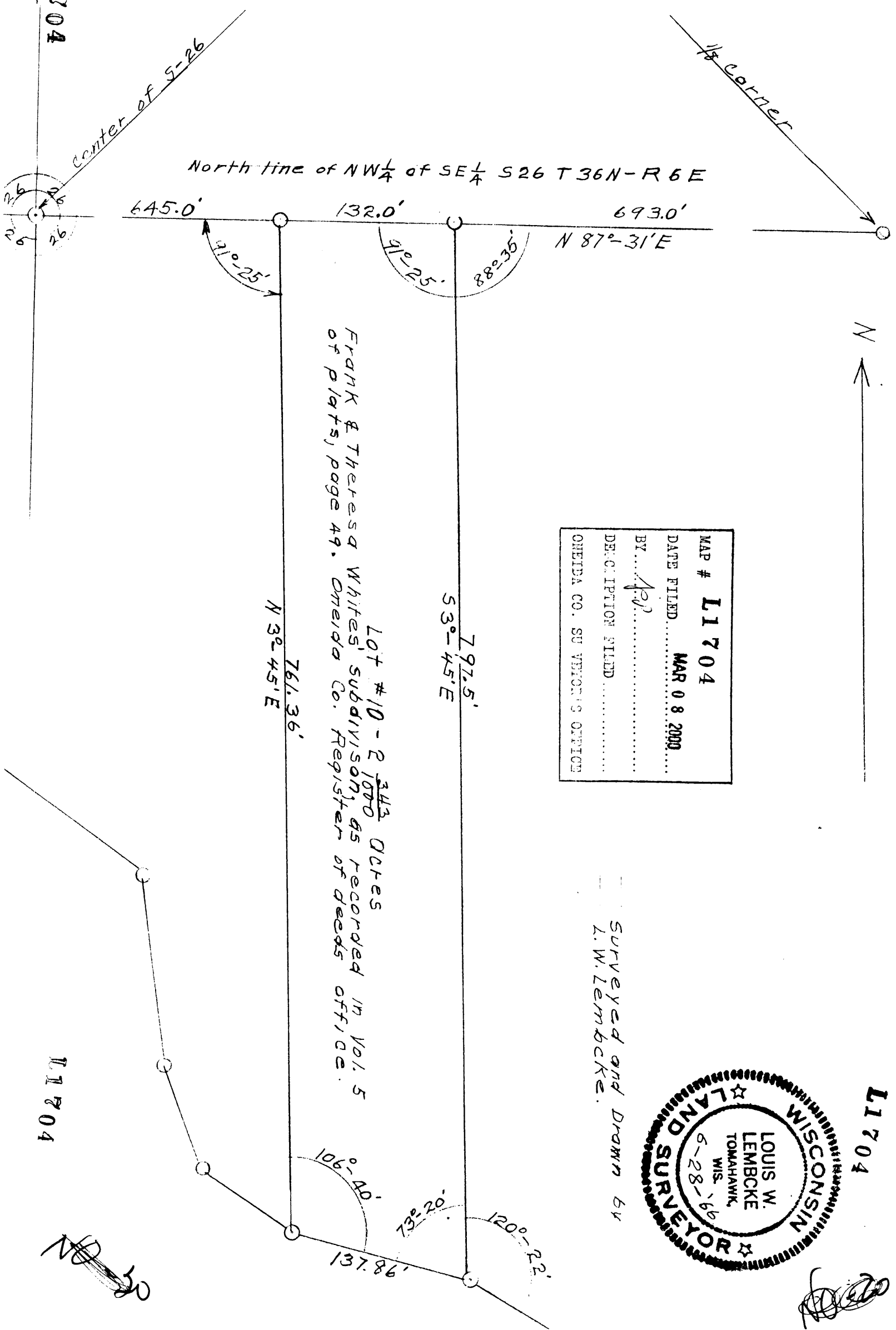


L1704

L1704

L1704

L1704



North line of NW $\frac{1}{4}$ of SE $\frac{1}{4}$ S26 T36N-R6E

645.0' 132.0' 693.0'

N 87°-31'E

91°-25'

91°-25'

88°-35'

Lot #10 - 2 $\frac{3}{4}$ Acres
FRANK & Theresa Whites' subdivision as recorded in Vol. 5
of plats, page 49. Oneida Co. Register of deeds office.

797.5'
53°-45'E

761.36'
N 32°-45'E

106°-40'

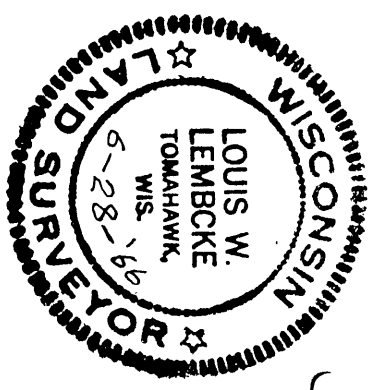
73°-20'

120°-22'

137.86'

MAP # **L1704**
 DATE FILED **MAR 08 2000**
 BY *L. W. Lembcke*
 DESCRIPTION FILED
 ONEIDA CO. SURVEYOR'S OFFICE

Surveyed and Drawn by
L. W. Lembcke.



L. W. Lembcke