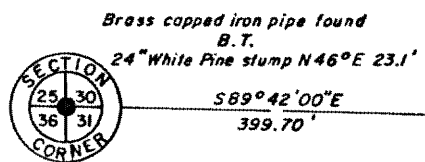


L171
L171

RECEIVED & FILED #.....
 Oneida County Surveyor's Office
 Date.....
FEB 11 1980
 By..... *M.J.H.*
 OCS Area #.....

RECEIVED & FILED #.....
 Oneida County Surveyor's Office
 Date..... *19 Jan 80*
 By..... *D. J. Winkler*
 OCS Area # *445-31-3905*



A parcel of land in Gov't Lot 1 and the NW 1/4 of the NW 1/4, Section 31, T39N, R5E, Minocqua Township, Oneida County, Wisconsin, more particularly described as follows:

Commencing at the corner common to Sections 25, 30, 31 and 36; thence S89°42'00"E, 399.70 feet; thence S0°06'36"W, 346.60 feet to the place of beginning.

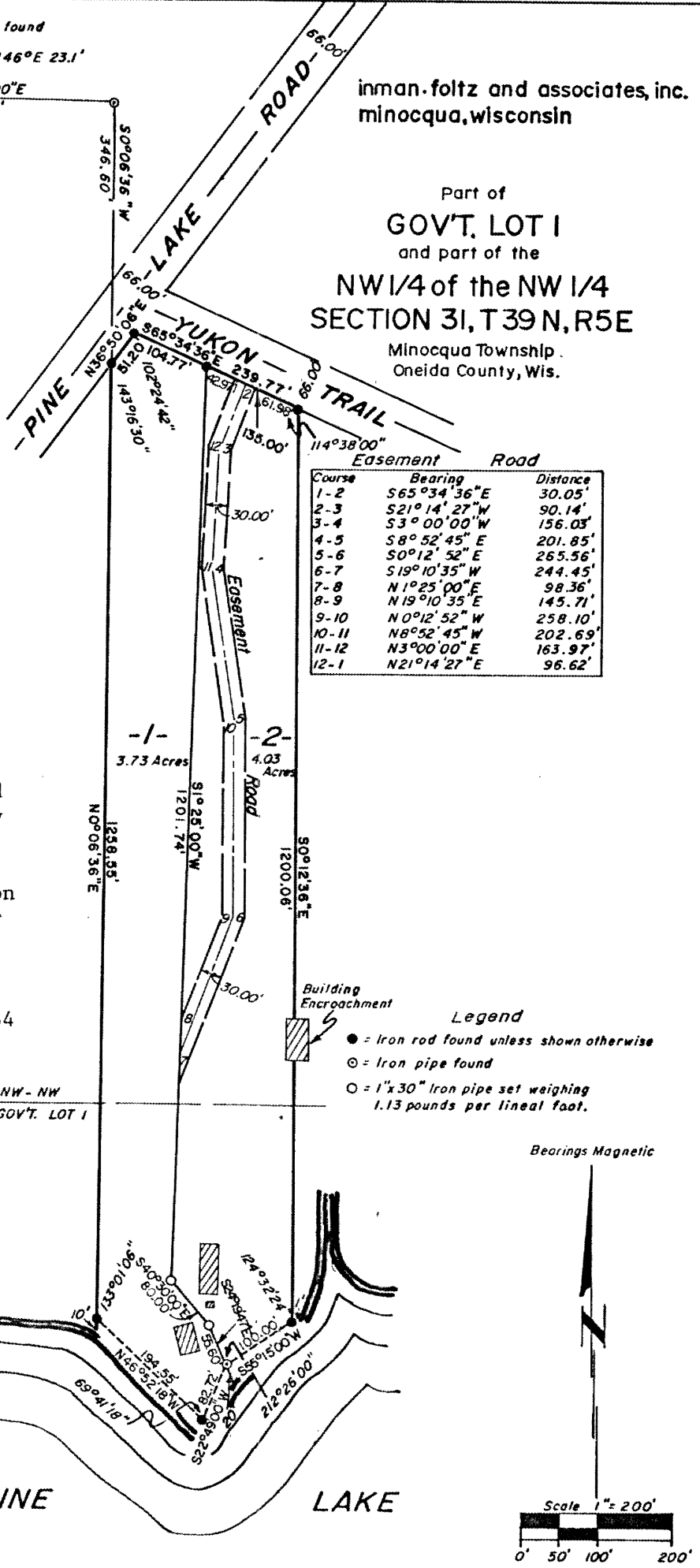
Thence N36°50'06"E, 51.20 feet; thence S65°34'36"E, 239.77 feet; thence S0°12'36"E, 1200.06 feet; thence S55°15'00"W, 100.00 feet; thence S22°49'00"W, 82.72 feet; thence N46°52'18"W, 194.55 feet; thence N0°06'36"E, 1258.55 feet to the place of beginning.

SURVEYOR'S CERTIFICATE:

I, Charles E. Winkler, Registered Land Surveyor No. S-1431, hereby certify that we have surveyed the property described above; that this plat is an accurate survey and a true representation thereof and correctly shows the exterior boundary lines and the correct measurements thereof; that we have made such survey by order of Frank Schlosser, and that we have complied with Chapter 236.34 of the Wisconsin Statutes.

WISCONSIN
 CHARLES E. WINKLER
 S-1431
 MINOCQUA, WIS.
 LAND SURVEYOR

Charles E. Winkler
4-20-79



F 8 2 1 7
 1 4 1 7