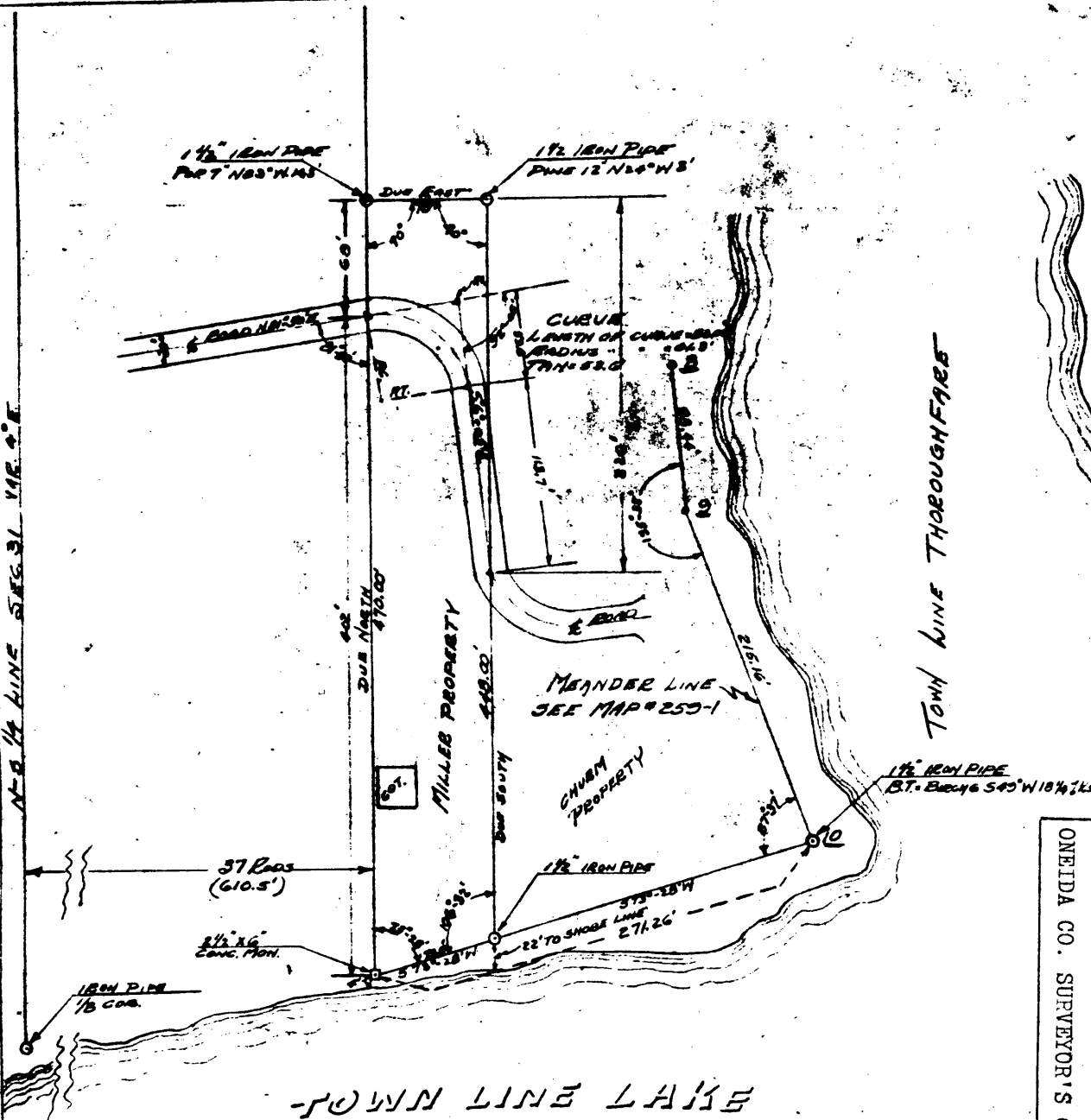
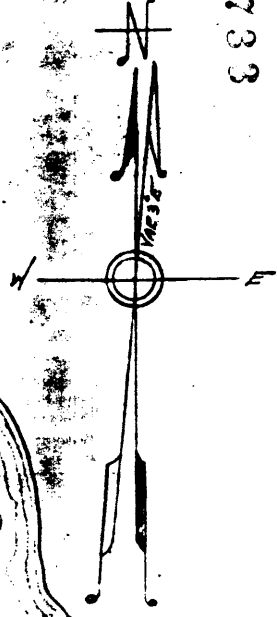


L1733



TOWN LINE THROUGH FARE

TOWN LINE LAKE

SURVEYORS CERTIFICATE

THIS IS TO CERTIFY THAT WE HAVE SURVEYED A PARCEL OF LAND IN ONEIDA COUNTY AND MORE PARTICULARLY DESCRIBED AS FOLLOWS: - BEGINNING AT A 2 1/4 INCH BY 6 INCH CONC. MON. SITUATED 610.5' EAST OF THE N-S 1/4 LINE SEC. 31 T 39 N. R. 11 E, AND ON THE NORTH SHORE OF TOWN LINE LAKE, THENCE DUE NORTH A DISTANCE OF 470 FEET, THENCE DUE EAST A DISTANCE OF 70 FEET, THENCE DUE SOUTH 448', THENCE S. 73° 28' W A DISTANCE OF 13.6 FEET TO THE PLACE OF BEGINNING WE FURTHER CERTIFY THAT THIS PLAT IS A TRUE & CORRECT REPRESENTATION OF THE LANDS SO SURVEYED BY US.

GENISOT ENGINEERING CO.
DEPUTY COUNTY SUPERVISOR
ONEIDA COUNTY, N.Y.

MAP #	L1733
DATE FILED	JUL. 21 2009
BY	J.P.S.
DESCRIPTION FILED	
ONEIDA CO. SUPERVISOR'S OFFICE	

	JURVEY FOR JAMES CHURCH PART F.G.C.T. 4077 SEC. 31, T 39 N. R. 11 E ONEIDA COUNTY, N.Y.
	GENISOT ENGINEERING CO. ENGINEER SCALE THREE SECT. PER DRAWING 250-2 DATE AUG 17 1909

L1733