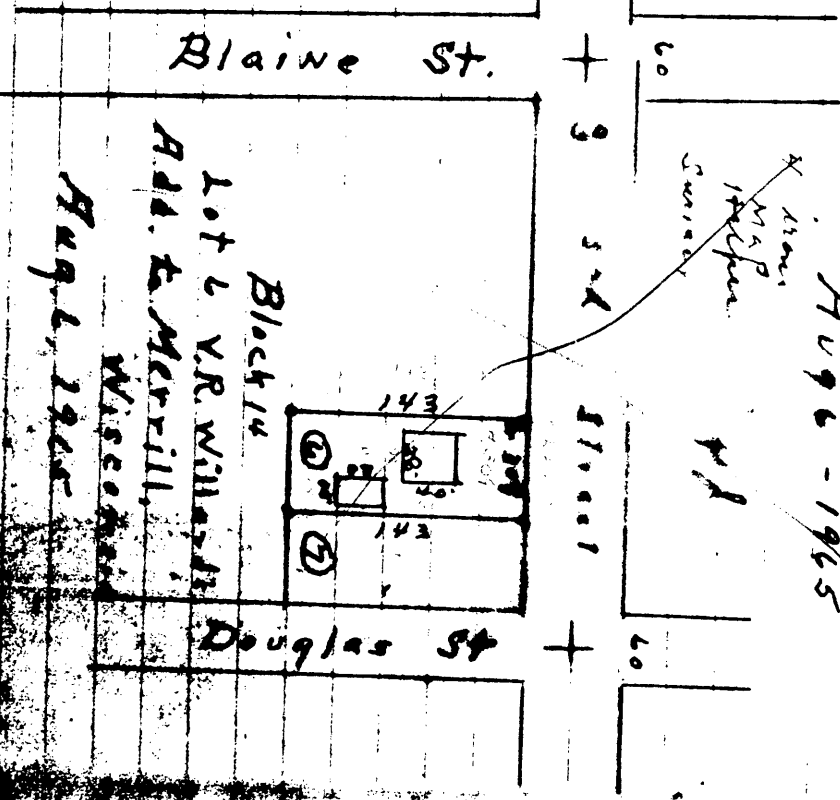
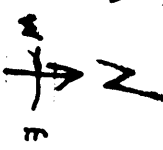


L1761

SEC 5 T 39N R5E
G11?

Surveyed for Loos
Real Estate

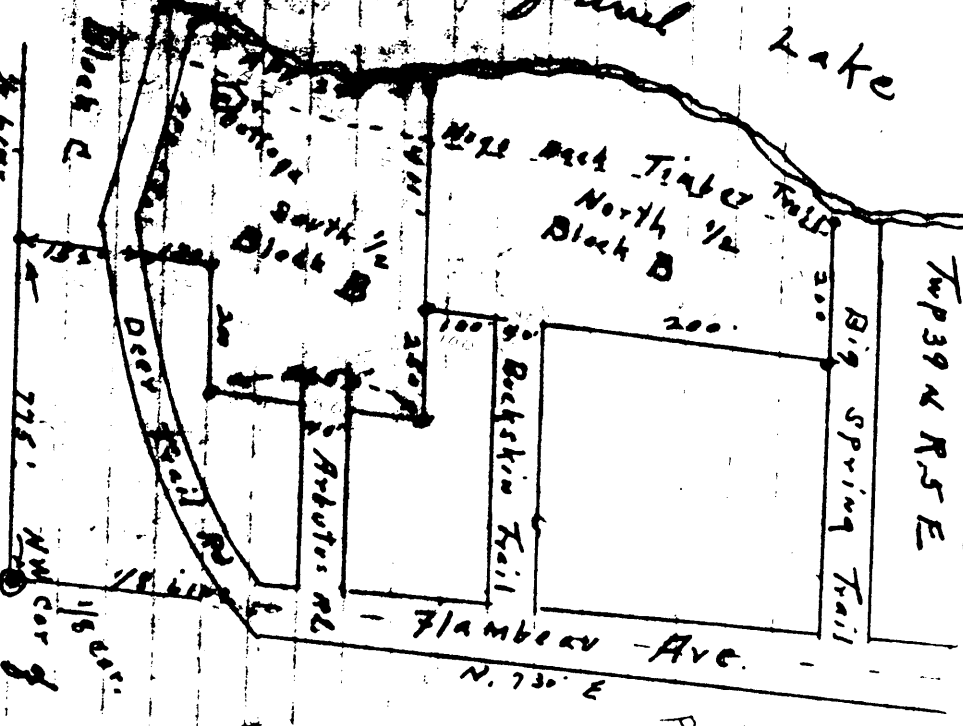
Aug 6 - 1965



Block 14
 Lot 2 V.R. Williams
 Add. to Merrill
 Wisconsin
 Aug 1, 1965

Squirrel Lake

L1761
 Flambeau - Heights
 Squirrel Lake
 Oneida County
 Cont Lot 1 Sec. 5
 Twp 39 N R 5 E



Block 2
 Surveyed for Loos
 Aug 2, 1965
 Flambeau
 Sec. 5 T 39 N R 5 E
 SE 1/4 Sec 1/4
 NW cor of

MAP # 1 1761
 DATE OCT 17 2001
 BY ...
 DESC ...
 ONEIDA ...

to and Dresser for Eileen