

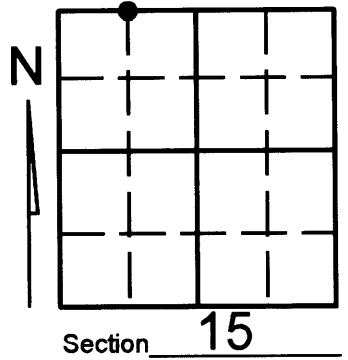
# U.S. PUBLIC LAND SURVEY MONUMENT RECORD

Note: This form is intended and designed to fulfill all requirements of Wisconsin Administrative Code, Chapter A-E 7.08 U.S. Public Land Survey Monument Record (3)(a)(b)(c)(d)(e)(f)(g)(h)(i). An additional sheet may be added if necessary to conform with said requirements.

(a) Corner location: Township 37 North  
Range 07 (East) West

Town/City/Village CASSIAN  
County ONEIDA

*w/1/16 N line*

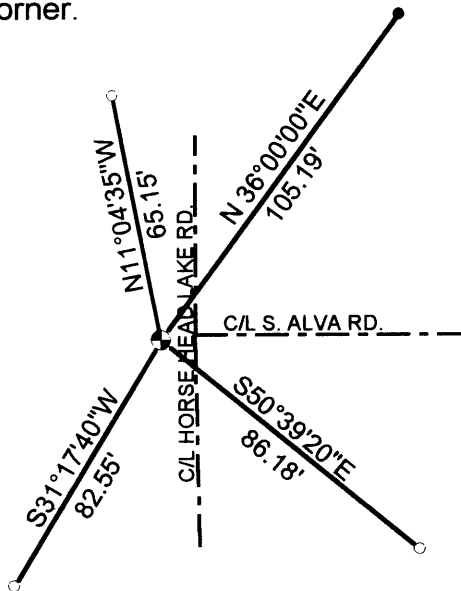


(b) (f) (g) (h) Description of monument found at this corner and if it was accepted, state all evidence (material, testimonial, occupational, plats, records, other monuments) used as a basis for accepting. If not accepted or if nothing was found, state evidence used as basis for establishing location. If reestablished through lost corner proportionate methods, indicate all monuments, distances and directions used to establish. Indicate type of monument found or set and sign post.

NOTE: This corner was referenced out in advance of road construction as an act of preserving survey evidence. This corner has not been tested for its accuracy during the course of this preservation and it is recommended that the corner be evaluated for its validity by those using it.

-Found 3/4" iron pipe as shown on county survey file number B578. Iron pipe was referenced out before road construction. Went back to check references and referenced the monument as shown below.

(c) (d) (e) Plan view of corner with ties to at least 4 witness monuments. If in disagreement with previously established corner, show the distances between the two corners and also indicate the ties to the disputed corner.



- LEGEND
- EXISTING 1" IRON PIPE
  - SET 1" X 24" IRON PIPE
  - ⊙ EXISTING 3/4" IRON PIPE (NOT DISTURBED)

MAP # L 1789

DATE FILED.....

BY.....

DESCRIPTION FILED.....

ONEIDA CO. SURVEYOR'S OFFICE

(i) I, KEVIN P. BIXBY

(type or print name) certify that the corner location on this record was determined by me or under my direction and control and that this U.S. Public Land Survey Monument Record is correct and complete to the best of my knowledge and belief.



Kevin P. Bixby 02/13/01  
Signature Date

3707100038  
Stamm

Index No. \_\_\_\_\_

L 1789

L 1789