

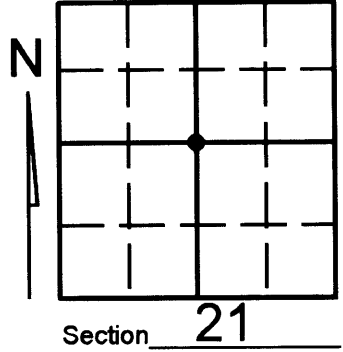
L1790

# U.S. PUBLIC LAND SURVEY MONUMENT RECORD

Note: This form is intended and designed to fulfill all requirements of Wisconsin Administrative Code, Chapter A-E 7.08 U.S. Public Land Survey Monument Record (3)(a)(b)(c)(d)(e)(f)(g)(h)(i). An additional sheet may be added if necessary to conform with said requirements.

(a) Corner location: Township 37 North  
Range 07 East West

Town/City/Village CASSIAN  
County ONEIDA



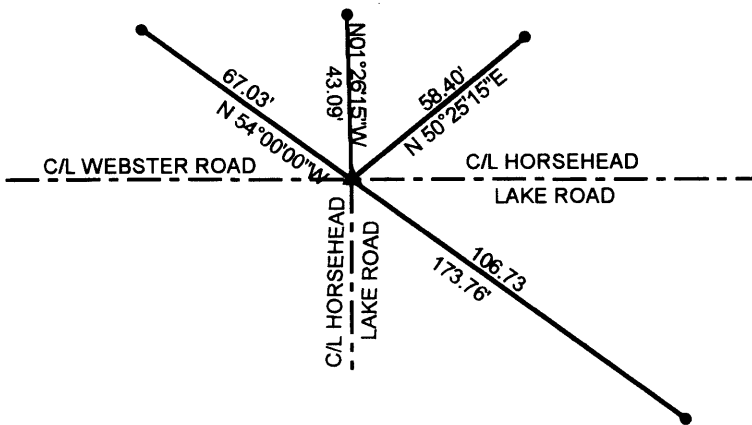
C 1/4

(b) (f) (g) (h) Description of monument found at this corner and if it was accepted, state all evidence (material, testimonial, occupational, plats, records, other monuments) used as a basis for accepting. If not accepted or if nothing was found, state evidence used as basis for establishing location. If reestablished through lost corner proportionate methods, indicate all monuments, distances and directions used to establish. Indicate type of monument found or set and sign post.

NOTE: This corner was referenced out in advance of road construction as an act of preserving survey evidence. This corner has not been tested for its accuracy during the course of this preservation and it is recommended that the corner be evaluated for its validity by those using it.

-Found 3/4" iron pipe as noted as point number two per county survey file number L1600. Referenced the monument before road construction and went back and checked references and reset the monument as shown below.

(c) (d) (e) Plan view of corner with ties to at least 4 witness monuments. If in disagreement with previously established corner, show the distances between the two corners and also indicate the ties to the disputed corner.



LEGEND  
● SET 1" X 24" IRON PIPE  
▲ REPLACED IRON PIPE WITH P.K. NAIL



(i) I, KEVIN P. BIXBY

(type or print name) certify that the corner location on this record was determined by me or under my direction and control and that this U.S. Public Land Survey Monument Record is correct and complete to the best of my knowledge and belief.



Index No. \_\_\_\_\_

Kevin P. Bixby  
Signature

02/13/01  
Date

370721 2020

L1790

L1790