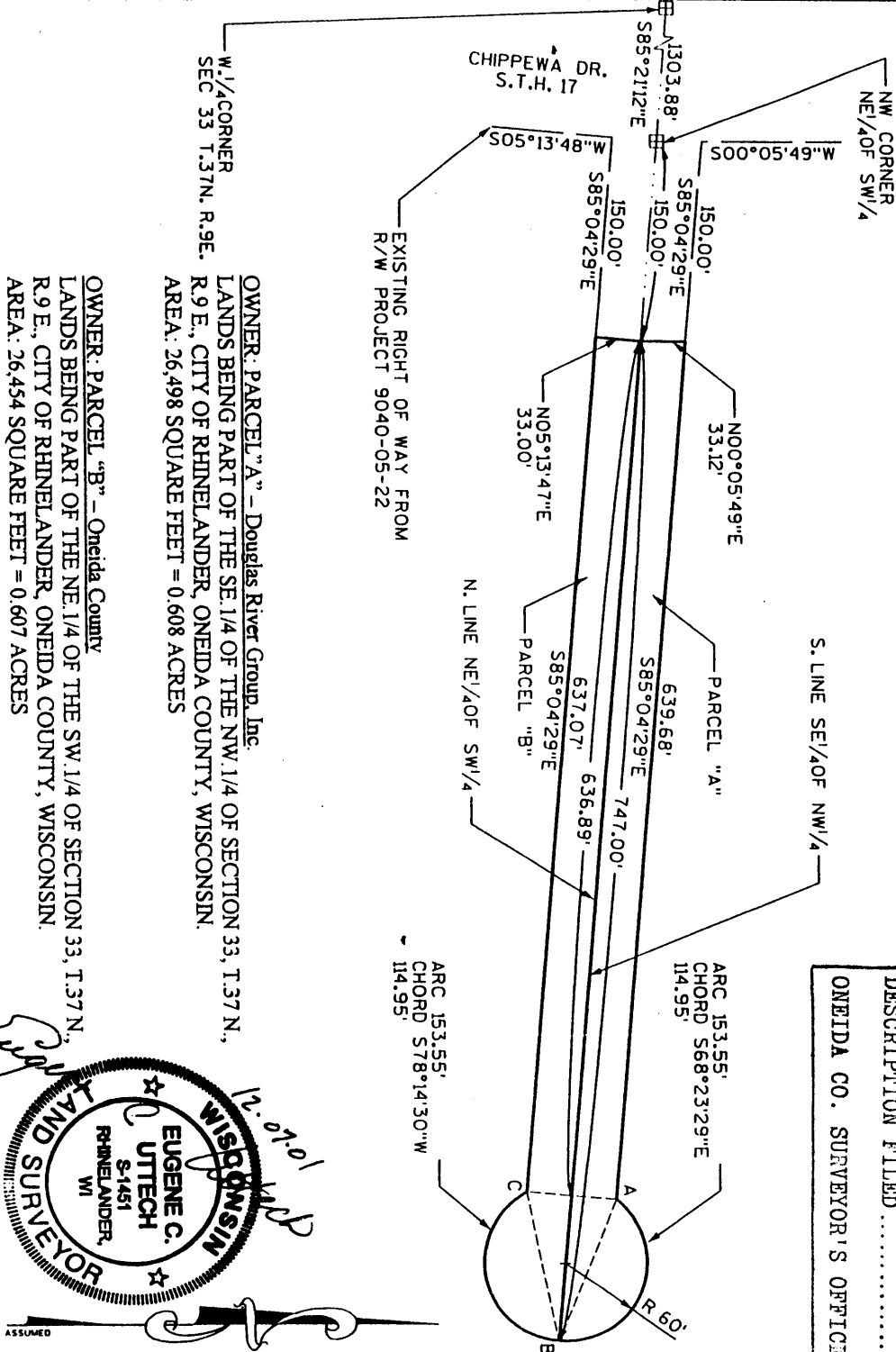


PROJECT * 980282	SCALE: 1" = 100'	FILE * 980282MAP
FIELD BOOK *	DRAWN BY PJK	SHEET * 1 OF 2
PAGES *	CHECKED BY EU	SIDE *

EUGENE UTTECH
SURVEYOR
MSA PROFESSIONAL SERVICES, INC.
1835 NORTH STEVENS STREET
RHINELANDER, WI 54501
(715) 362-3244

MSA
PROFESSIONAL SURVEYOR
1835 N. Stevens St. Rhineland, WI 54501
715-362-3244 1-800-844-7854 Fax: 715-362-4116
© MSA PROFESSIONAL SERVICES

MAP FOR DESCRIPTION PURPOSES ONLY



W 1/4 CORNER SEC 33 T.37N. R.9E.
 OWNER: PARCEL "A" - Douglas River Group, Inc.
 LANDS BEING PART OF THE SE. 1/4 OF THE NW. 1/4 OF SECTION 35, T.37N., R.9 E., CITY OF RHINELANDER, ONEIDA COUNTY, WISCONSIN.
 AREA: 26,498 SQUARE FEET = 0.608 ACRES
 OWNER: PARCEL "B" - Oneida County
 LANDS BEING PART OF THE NE. 1/4 OF THE SW. 1/4 OF SECTION 35, T.37N., R.9 E., CITY OF RHINELANDER, ONEIDA COUNTY, WISCONSIN.
 AREA: 26,454 SQUARE FEET = 0.607 ACRES

MAP # **L1854**
 DATE FILED 1994-1-4 2002
 BY: *[Signature]*
 DESCRIPTION FILED
 ONEIDA CO. SURVEYOR'S OFFICE

12.07.01
 WISCONSIN
 EUGENE C. UTTECH
 S-1451
 RHINELANDER, WI
 LAND SURVEYOR
 ASSUMED