

L1881

L1881

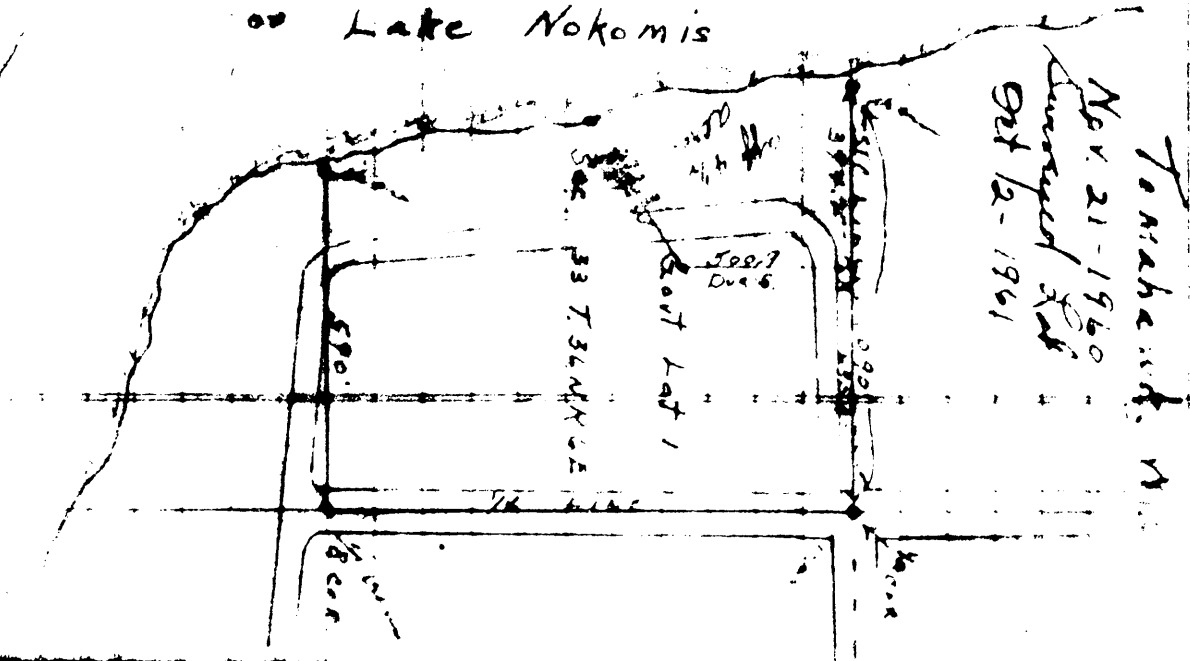
MAP # ...
 DATE FILED ...
 BY ...
 DESCRIPTION FILED ...
 ONEIDA CO. SU. VEYOR'S OFFICE

Survey for Ray D.

L1881

Tombhawk River Bridge

Lake Nokomis



Nov 21 - 1960
 Surveyed for
 Oct 2 - 1961

To make with map

33 T. STANLY

590.7

East Lot 1

590.8

590.9

590.10

590.11

590.12

590.13

590.14

590.15

590.16

590.17

590.18

590.19

590.20

590.21

590.22

590.23

590.24

590.25

590.26

590.27

590.28

590.29

590.30

590.31

590.32

590.33

590.34

590.35

590.36

590.37

590.38

590.39

590.40

590.41

590.42

590.43

590.44

590.45

590.46

590.47

590.48

590.49

590.50

590.51

590.52

590.53

590.54

590.55

590.56

590.57

590.58

590.59

590.60

590.61

590.62

590.63

590.64

590.65

590.66

590.67

590.68

590.69

590.70

590.71

590.72

590.73

590.74

590.75

590.76

590.77

590.78

590.79

590.80

590.81

590.82

590.83

590.84

590.85

590.86

590.87

590.88

590.89

590.90

590.91

590.92

590.93

590.94

590.95

590.96

590.97

590.98

590.99

590.100