

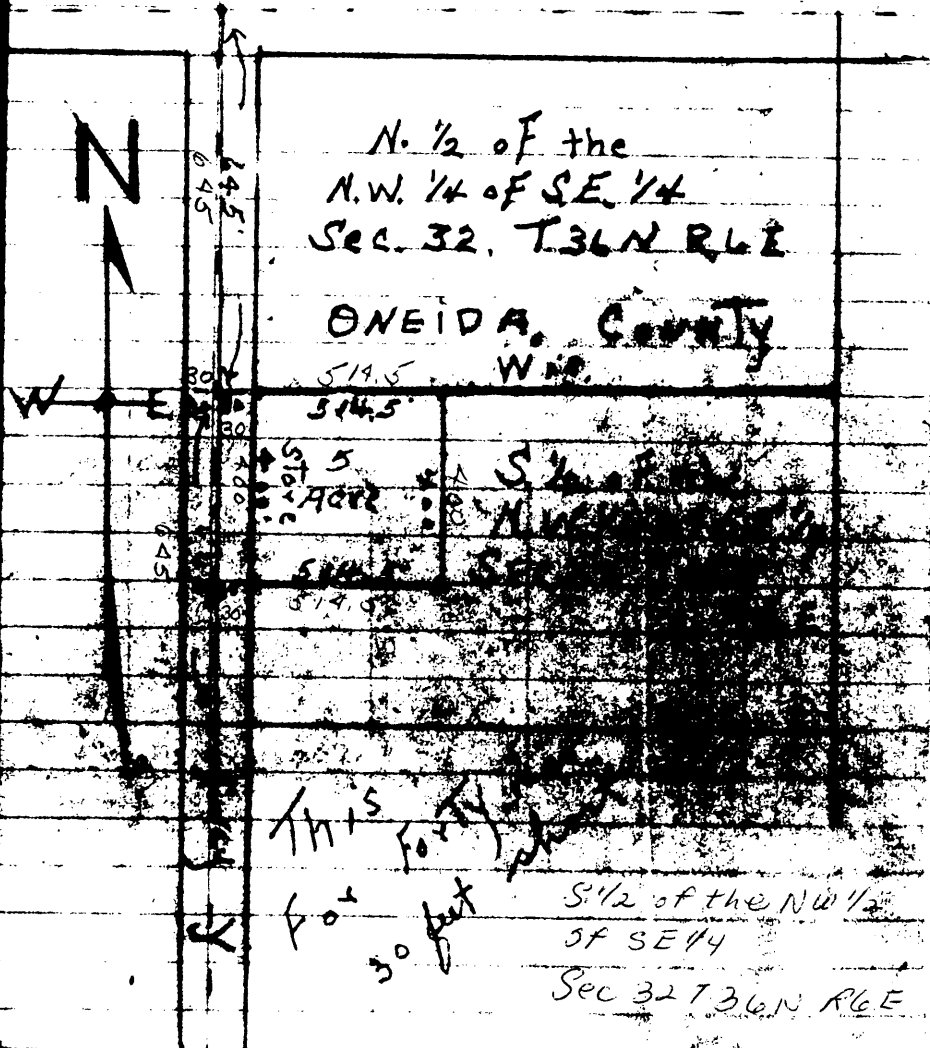
1st. L1883 Madeline
Tomahawk For Mrs. Hensen
453-3269 R2

Tomahawk,
Wis.

Sept 28, 1968

37

2 PG



June 11 - 1883

Wants Survey

Oliver's Subpart

Hiram's X.

Oneida County

L1883

Aug 5 1883

Surveyed for Mrs. Hiram's

part 5 lots and River frontage

in part of NE 1/4, SE 1/4 & NW 1/4

See 32 T36N R6E

Oneida County, Wis.

Map on file

June 10th, 1883

Surveyed Lot 5

Mrs. Madeline T. Hiram's

R 2 Tomahawk

Wis.

MAP # L1883

DATE FILED AUG 2 2302

BY

DESCRIPTION FILED

ONEIDA CO. SURVEYOR'S OFFICE

L1883

Center
See