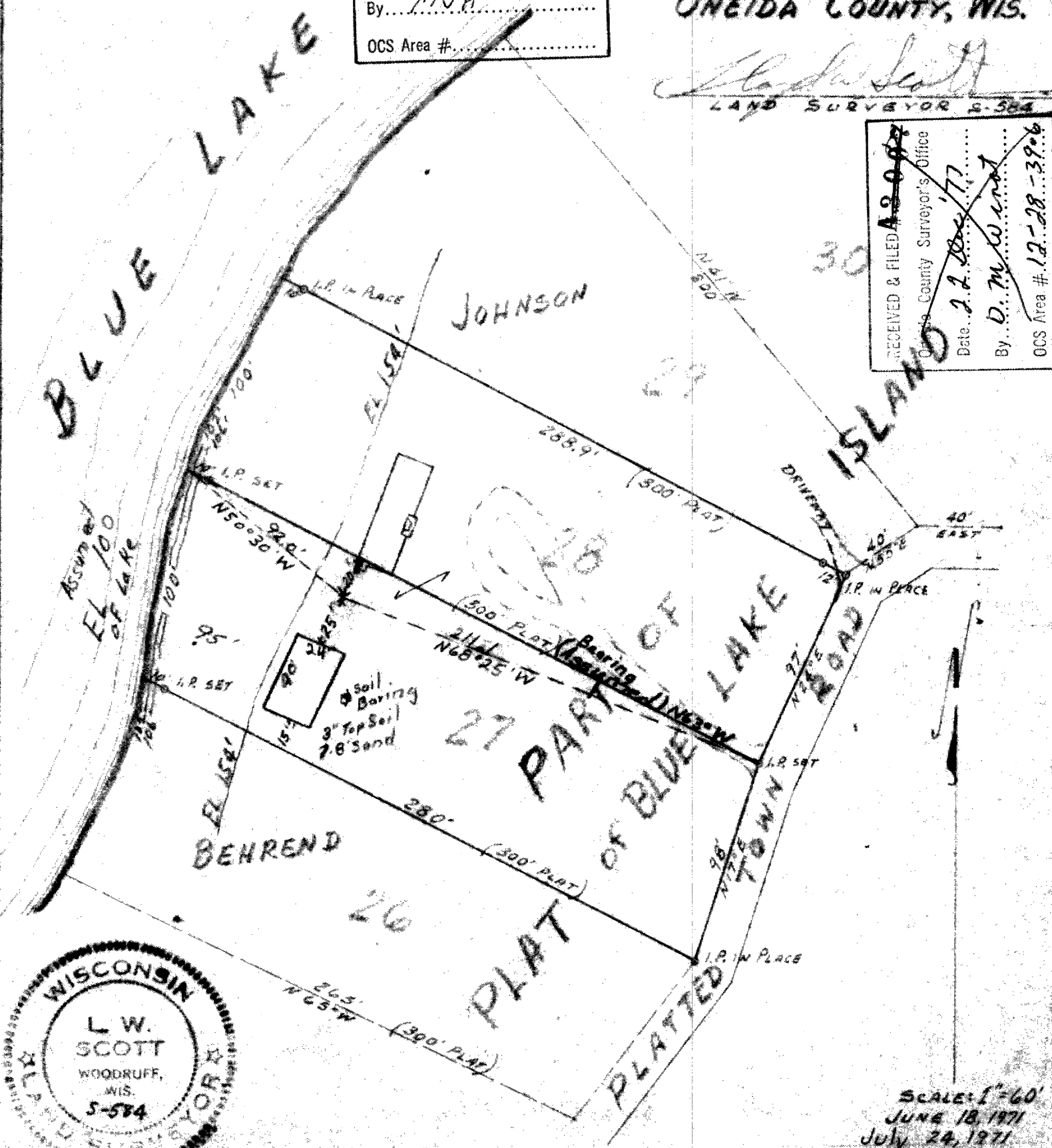


RECEIVED & FILED # **L190**  
 Oneida County Surveyor's Office  
 Date **FEB. 14 1988**  
 By **M.J.H.**  
 OCS Area #.....

PART OF  
**GOV'T. LOT 7**  
**SECTION 28, T39N-R06**  
**ONEIDA COUNTY, WIS.**

*L. W. Scott*  
 LAND SURVEYOR 5-584

RECEIVED & FILED # ~~490~~  
 Oneida County Surveyor's Office  
 Date ~~2.2.88~~ **177**  
 By ~~D. M. Woodruff~~  
 OCS Area # ~~12-28-3906~~



SCALE: 1"=60'  
 JUNE 18, 1871  
 July 24, 1871  
 Mar. 25, 1974

0617