

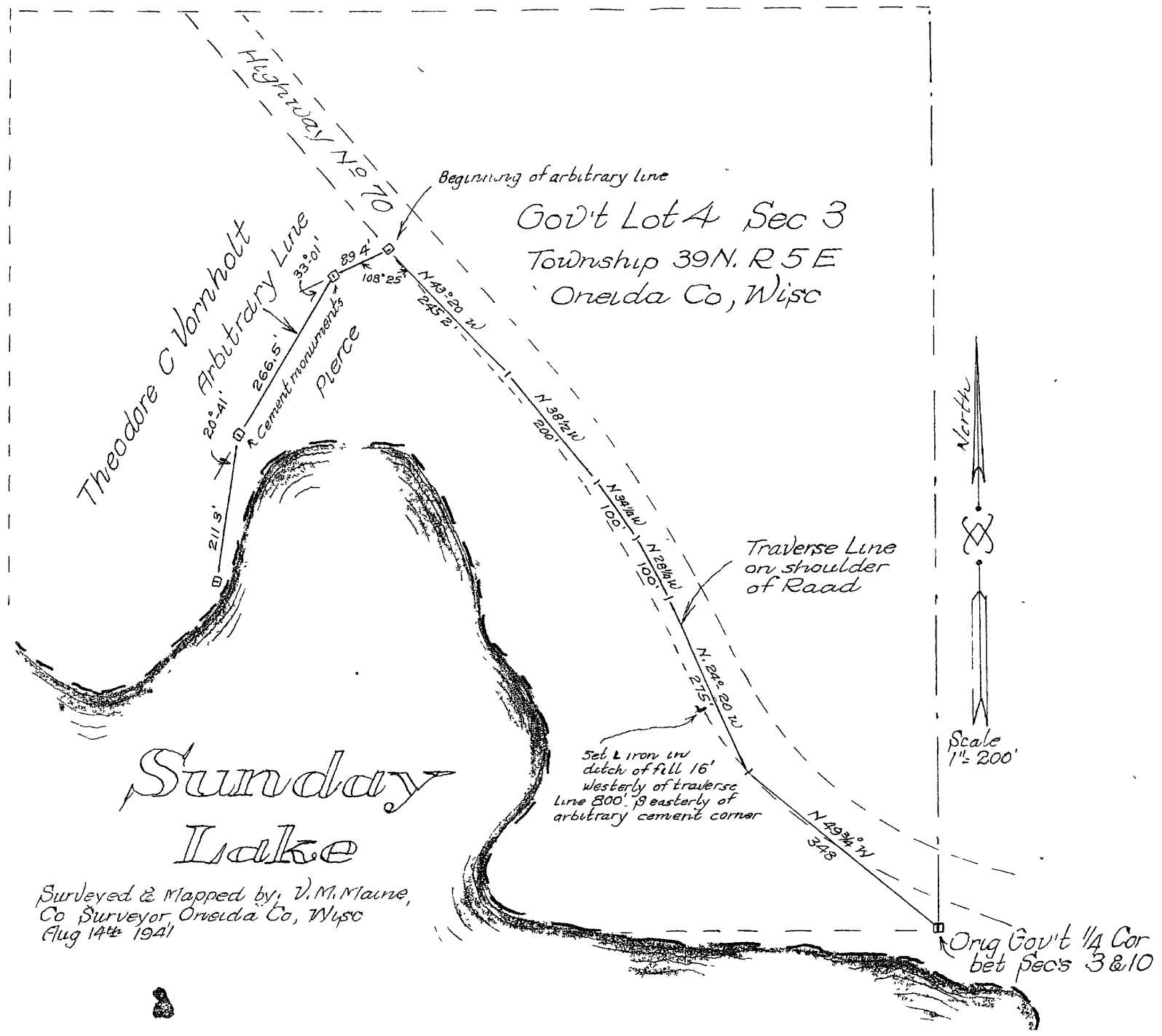
1901

1901

Vol. 143 Pg 447

Survey and Map of an arbitrary line in Gov't Lot 4  
Section 3 Township 39 North of Range 5 East Oneida  
County, Wisc. from Highway No 70 to Sunday Lake

MAP #	1,1901
DATE FILED	
BY	V.M.
DESCRIPTION FILED	OCT 1 1 2002
ONEIDA CO. SURVEYOR'S OFFICE	



1901