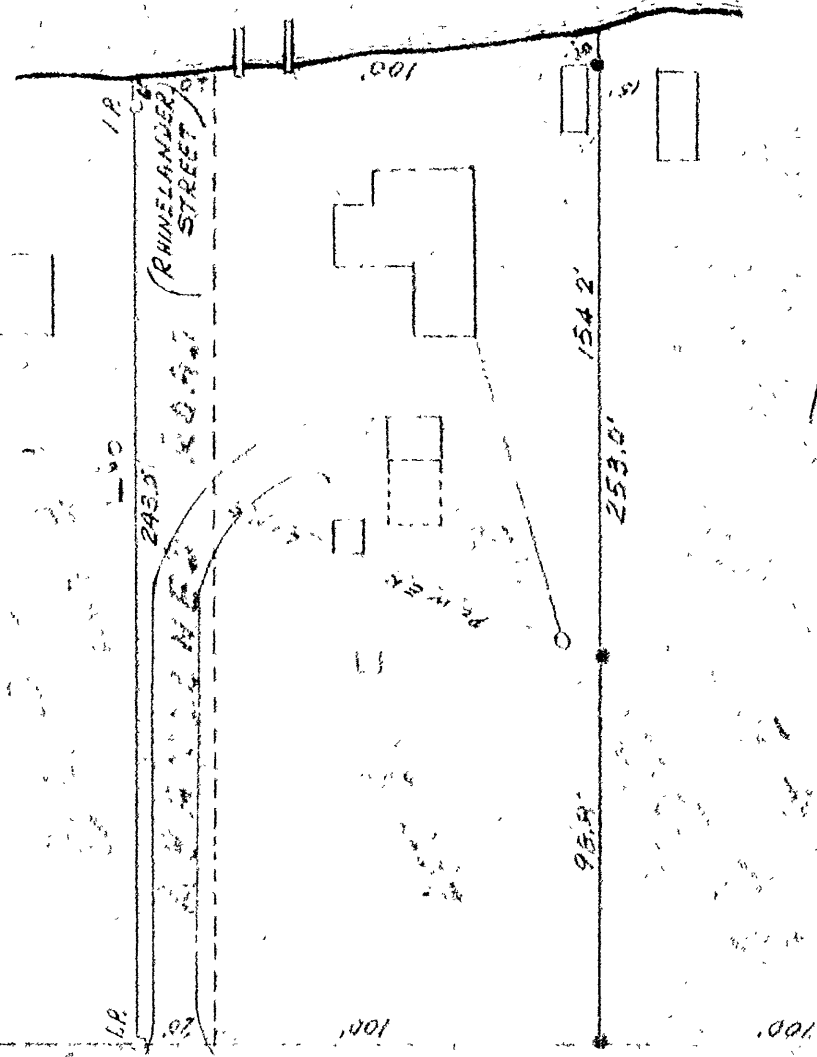


PLAT 4 OF THE TOWN OF SULLYGALON SUBDIVISION

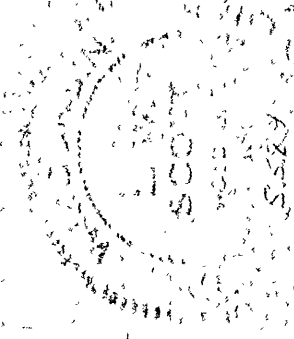
IN  
GOV'T. LOT 6  
SECTION 24, T39N-R7E  
ONEIDA COUNTY, WIS.

SURVEYOR S-584  
JAN. 26, 1976



SCALE: 1" = 50'  
IRONS FOUND IN PLACE

RECEIVED & FILED # 1911  
 Oneida County Surveyor's Office  
 Date FEB 14 1986  
 By MJH  
 OCS Area #



RECEIVED & FILED # 1911  
 Oneida County Surveyor's Office  
 Date 22 Dec 77  
 By D. M. W. [Signature]  
 OCS Area # 19-24-39.7