

This form is intended to fulfill the requirements of Chapter A-E 7.08 (3)(a) thru (l) U.S. Public Land Survey Monument Location Record, Wisconsin Administrative Code. Use the reverse side of form for continuation.

U.S. PUBLIC LAND SURVEY MONUMENT LOCATION RECORD

USPLS CORNER: **NORTH 1/4 CORNER** SECTION: **31** TOWNSHIP: **38 NORTH** RANGE: **10 EAST**

NAME OF WATERWAY FOR M.C. CORNER: **N/A** SECTION LINE: **N/A**

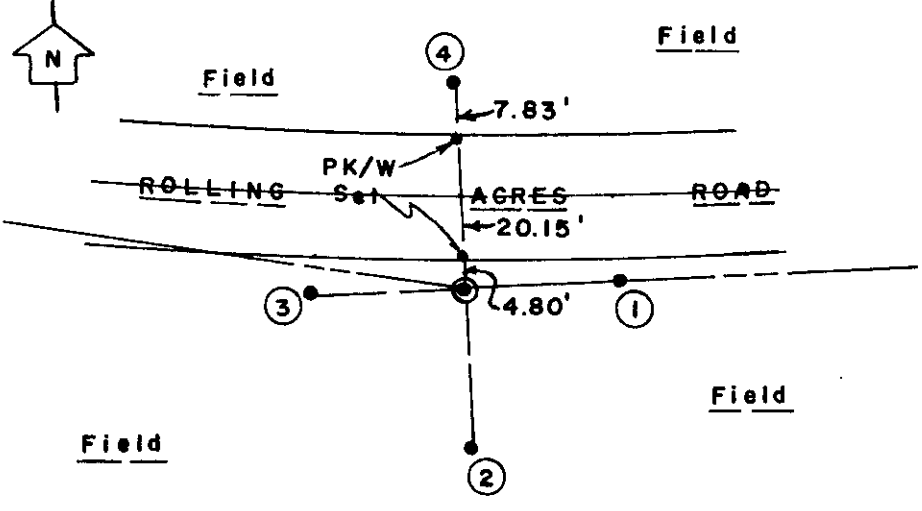
(CITY/VILLAGE/TOWN) OF: **SUGAR CAMP** COUNTY OF: **ONEIDA**

Description of monument found or placed and all other evidence used as the basis for monument location; including monuments and related measurements required if the corner location was reestablished by lost corner proportionate methods. Also indicate name of original surveyor, original survey date and the corner monument, bearing trees, witness or other reference monuments established; including measured bearing and distance ties, from available records.

THIS CORNER WAS REESTABLISHED WITH THE PRIOR VERBAL APPROVAL OF ONEIDA COUNTY SURVEYOR MICHAEL J. ROMPORTL, AS NO EVIDENCE OF RECORD CORNER MONUMENT OR REFERENCES COULD BE FOUND.

-In September 1863, William E. Daugherty/GLO set a wood post as the original corner and marked new OBTs: a 12" Pw N08°W 15 links and a 12" Birch S51°E 37 links; all now obliterated.
 -In August 1924, C.D. Vaughan measured 41.06 chains from original GLO NW corner of Section 31 to original GLO North 1/4 corner of Section 31 and noted new BTs: a 12" Pw stump S52°W 50 links, a 14" Pw stump N61°W 78 links and a 6" Poplar N42°E 72 links, per Old Field Book 38 Page 61 in Oneida County survey records; all of the BTs now obliterated.
 -In February 1956, Norman Loftus/RLS 259 notes the bearing of the south line of adjoining Section 30 at S81°18'E to South 1/4 corner of Section 30, also being the North 1/4 corner of Section 31, and set a wood post 21 links South, now gone, and then ran N89°05'E 40.69 chains to the SE corner of Section 30 at 'T' road junction, and also notes an iron pin on North edge of road at S1/16SE of Section 30 at 20.345 chains or midway from South 1/4 corner to SE section corner of Section 30 per Ripco Book 1 Page 147 in Oneida County survey records.
 -In 1978, Philip T. Hansen/RLS 498 referenced the S1/16SE of Section 30 per his location record filed in Oneida County records, which I reestablished from found references; therefore, I reestablished the North 1/4 corner of Section 31 by doubling the measured distance from the SE corner to the S1/16SE of Section 30 West on a right line and set a standard 2" dia. x 30" long aluminum pipe monument with stamped Oneida County cap flush in a shallow gravel filled depression in North edge of existing open field and 4.80' South of the South edge of existing E/W blacktop pavement roadway, per sketch on reverse. This recovery completed September 18, 2002; there were no direct witnesses other than vehicle drive-bys.

Plan view map of monument location with bearing and distance ties to a minimum of four(4) described witness or reference monuments of concrete, natural stone, iron, live bearing trees or equivalent material. If applicable, also show a minimum of two(2) bearing and distance ties to any other monument found and not accepted; including the bearing and distance from the accepted monument.



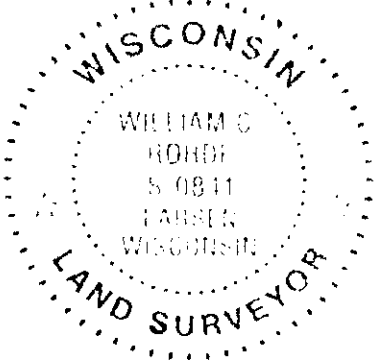
WITNESS MONUMENT TIES:

- ① 5/8" dia. by 24" long rebar set with yellow poly RM cap flush East 23.63 feet.
 - ② 5/8" dia. by 24" long rebar set with yellow poly RM cap 20" below grade South 25.68'.
 - ③ 5/8" dia. by 24" long rebar set with yellow poly RM cap flush West 23.73'.
 - ④ 5/8" dia. by 24" long rebar set with yellow poly RM cap flush North 32.78'.
- Standard white poly 'T' marker post set 24" South of corner monument.

SCALE: 1" = 30'

Unless otherwise indicated, all bearing tree ties are to a .25" dia. by 2.5" long PK nail with a 1.25" dia. steel washer driven into unblazed right face and a .25" dia. by 2.5" long PK nail with a 2" dia. steel washer stamped BT is also driven into unblazed face of bearing tree at DBH; the basis for measured bearings is by compass to nearest degree and all tie distances are measured horizontal by steel tape corrected to nearest 1/100th feet at standard temperature of 68° F.

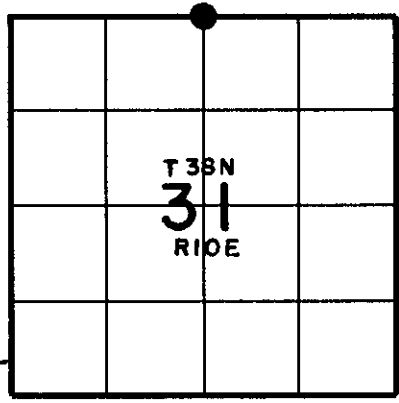
RLS SEAL:



LAND SURVEYOR CERTIFICATE:

I, William C. Rohde, hereby certify that I am duly licensed as a Professional Land Surveyor in the State of Wisconsin; that this USPLS monument location was determined by me and/or under my direct supervision and control; and that this U.S. Public Land Survey Monument Location Record is true and correct to the best of my knowledge and belief.

Signed: *William C. Rohde*
 William C. Rohde RLS 841



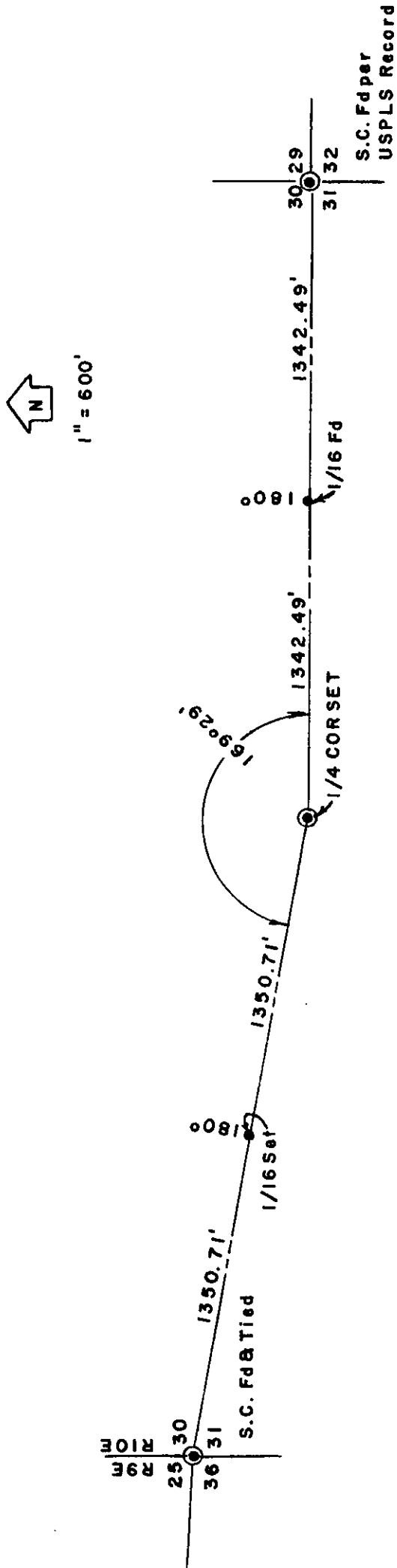
SECTION LOCATION MAP
 INDEX NO. *V 3*

Date Signed: **March 1, 2003**

38-10-30-00-20

L 1924

Stock No. 26273



NOTE: Traverse data by Topcon Total Station.